

# CONTACT POINT

VOLUME 94 / NUMBER 2

## Where Did They Go From Here?

Oregon | Montana | Texas  
Virginia | Iraq

Young alumni talk about  
their career paths

Dr. Adam Kirkpatrick '10





# CONTINUING DENTAL EDUCATION

World-class learning  
in a world-class facility...



UNIVERSITY OF THE  
**PACIFIC**  
Arthur A. Dugoni  
School of Dentistry

## CDE CALENDAR • Nov 2014 – April 2015

### NOVEMBER 2014

- 22 The Dental Professional's Role in the Evaluation, Diagnosis and Treatment of Snoring and Sleep Apnea  
**LECTURE AND HANDS-ON COURSE**

### DECEMBER 2014

- 6 Don't Just Inject, Add Some Finesse: Local Anesthesia Workshop  
**HANDS-ON COURSE**
- 13-14 Lasers for Hard and Soft Tissues  
**HANDS-ON COURSE**

### JANUARY 2015

- 10 & 31 Certification in Radiation Safety for Allied Dental Professionals  
**HANDS-ON COURSE**
- 24 Oral Surgery for General Practitioners: Comprehensive Training from A to Z  
**HANDS-ON COURSE**
- 24 Infection Control and the California Dental Practice Act
- 31 High Tech Dental Law for the Modern Dentist—  
From Cone Beam CT to Yelp

### FEBRUARY 2015

- 7-8 Smile Reconstruction Using Porcelain Veneers  
**HANDS-ON COURSE**
- 9-13 21st Annual Island Dental Colloquium, Big Island, Hawaii
- 21 Out With the Old, In With the New—  
A Crash Course on State of the Art Dentistry
- 28 Doctor, Why Does It Hurt? Orofacial Pain, Sources and Treatments

### MARCH 2015

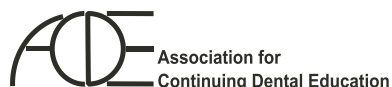
- 7 Socket Preservation Bone Grafting for General Dentists  
**HANDS-ON COURSE**
- 21 An Interdisciplinary Forum on Preserving the Natural Dentition
- 27-28 Multirooted Endodontics Two-Day Workshop  
**HANDS-ON COURSE**

### APRIL 2015

- 25 30th Annual Charles A. Sweet, Sr.  
Pediatric Dentistry Memorial Lecture

All courses will be held at the Arthur A. Dugoni School of Dentistry's new campus at 155 Fifth Street in San Francisco unless otherwise indicated.

**ADA CERP**® | Continuing Education  
Recognition Program



To register or for further information, contact the Division of Continuing Dental Education at:

**WEBSITE** dental.pacific.edu/ce1  
**PHONE** (415) 929-6486  
**EMAIL** cedental@pacific.edu

**10% TUITION DISCOUNT FOR CURRENT DUES-PAYING ALUMNI ON MOST PROGRAMS.**

University of the Pacific, Arthur A. Dugoni School of Dentistry is an ADA CERP recognized provider. ADA CERP is a service of the American Dental Association to assist dental professionals in identifying quality providers of continuing dental education. ADA CERP does not approve or endorse individual courses or instructors, nor does it imply acceptance of credit hours by boards of dentistry. University of the Pacific, Arthur A. Dugoni School of Dentistry designates its activities for a specified number of continuing education credits. One unit of credit is awarded for each hour of instruction. Please refer to the individual course descriptions on our website or in our catalog for credit designation.

## {Features}

### 13 | Postgraduate Career Paths

Where do dental students go after graduation—into private practice or perhaps into teaching? Recent graduates from varied backgrounds talk about their lives now and how their experiences at Pacific Dugoni helped shape their decisions and career paths.

### 18 | The Pacific Promise

Pacific Dugoni faculty, staff and students are customer-friendly and devoted to serving patients. But, there is always room for improvement. Dental school leaders discuss The Pacific Promise, a new, school-wide customer service initiative that aims to raise the bar in terms of overall patient service and to create a positive impact on all of the school's constituents.

### 22 | Farewell to 2155 Webster

As the dental school prepared to move to its new campus, long-time faculty member, Dr. Gene LaBarre, sent the school community an email about 2155 Webster Street, and he hit the mark. We wanted to share his personal narrative, full of memories and milestones throughout the decades, with our alumni and friends.

## [Departments]

- |                  |                             |
|------------------|-----------------------------|
| 3 From the Dean  | 12 University News          |
| 4 Current Issue  | 26 Alumni Scene             |
| 7 Staff Profile  | 28 Philanthropy             |
| 10 Around Campus | 31 Memorial and Honor Gifts |

Cover photo by Marci B Photography

PHOTO: JOAN YOKOM

## CONTACT POINTS



contactpoint.pacific.edu

### Alumni Association

*Alumni Association President*  
Dr. Artimez Adkins '04

*Executive Director*  
Dr. David Nielsen '67  
(415) 929-6489

*Assistant Director*  
Joanne Fox  
(415) 929-6423  
jfox@pacific.edu

### Pacific Dugoni Foundation

Call (415) 929-6406 or visit  
[www.dental.pacific.edu](http://www.dental.pacific.edu)  
and click on "Support the School"

*Foundation President*  
Dr. Edmond Bedrossian '86

*Executive Director*  
Jeff Rhode  
(415) 749-3349  
jrhode@pacific.edu

### Practice Listings and Dental Opportunities

To register your listing online, visit [dental.pacific.edu/x1260.xml](http://dental.pacific.edu/x1260.xml)  
or call Andrea Woodson at (415) 351-7108  
fax (415) 749-3377  
[awoodson@pacific.edu](mailto:awoodson@pacific.edu)

### Continuing Dental Education

For complete CE course listings, visit [dental.pacific.edu/ce1](http://dental.pacific.edu/ce1)  
(415) 929-6486 or [cedental@pacific.edu](mailto:cedental@pacific.edu)



**cda**<sup>®</sup>  
PRESENTS


The Art  
and Science  
of Dentistry

*CDA Presents.*

The premier dental  
convention in the U.S.

- Nearly 600 exhibiting companies
- More than 100 new product introductions
- Dynamic speakers
- Exciting attractions in Anaheim and San Francisco

[cdapresents.com](http://cdapresents.com)

 Like us  
[facebook.com/cdafan](https://facebook.com/cdafan)

 #cdaANA  
#cdaSF

 Download the  
CDA app



**Anaheim, California**

April 30–May 2, 2015

May 12–14, 2016



**San Francisco, California**

August 20–22, 2015

September 8–10, 2016



San Francisco, California  
Vol. 94 · Number 2 · 2014  
[www.dental.pacific.edu](http://www.dental.pacific.edu)

#### DEAN

Patrick J. Ferrillo, Jr.

#### EDITOR

Kara A. Sanchez

#### EDITORIAL BOARD

David W. Chambers  
Patrick J. Ferrillo, Jr.  
Joanne Fox  
Eddie K. Hayashida  
Jeff Rhode  
Kara A. Sanchez  
Dan Soine  
Craig S. Yarborough  
Joan Yokom

#### CONTRIBUTING WRITERS

Christina Boufis  
Marianne Jacobson  
Eugene LaBarre  
Taryn Nakamura  
Kara Sanchez  
Dan Soine  
Colleen Woo

#### ART DIRECTOR

Joan Yokom

#### DESIGN

Brian Blanchard  
Devon Bailey  
Sandra Shuhert

#### PHOTOGRAPHY

Marci B Photography  
Joel Chan  
Bruce Cook  
Jon Draper  
Arnold Eilers  
Teresa Harding  
Richard Mayer  
United States Navy  
Joan Yokom

#### ADVERTISING

Devon Bailey

*Contact Point* is published biannually by the University of the Pacific, Arthur A. Dugoni School of Dentistry. Twelve-time winner of the International College of Dentists Journalism Competition and winner of the Gies Award for editorial content. Readership consists of 9,000 alumni, parents, friends, faculty, students and members of the professional community. Material included herein does not necessarily represent the official position of the school. All requests regarding advertising should be directed to Devon Bailey, advertising manager, University of the Pacific, Arthur A. Dugoni School of Dentistry, 155 Fifth St., San Francisco, CA 94103 or telephone (415) 929-6584. Material in this publication may not be reproduced in any form without permission.



PATRICK J. FERRILLO, JR., DEAN

### Making a House a Home

Building a new campus doesn't end with construction. As the dust settles at our new San Francisco home, we are still coordinating with contractors and navigating new systems. What does that look like on a daily basis? You'll find us fine-tuning the audiovisual system, mapping out the best routes on Muni, Yelping new lunch spots and showing patients how to check in with our digital kiosks.

There have been coffee spills and fire drills. Things may get hectic at times, but it's all part of making a house a home.

Throughout the process of settling into our new building, I'm grateful to the Pacific Dugoni family for coming together to problem-solve and persevere. Thank you to the everyday heroes who have stepped forward, offered their time and expertise or have filled new roles when opportunities arose. Many have worked late nights and early mornings to make sure that our building is up and running.

All homes have stories of transition. During our final days at Webster Street, Dr. Gene LaBarre shared a lovely tribute to our home in Pacific Heights, and we reprint it here as a reminder of the intangible qualities that make a house a home.

In this issue, we also showcase individuals who offer various perspectives on transformation and transition. You'll find a profile on Berry Coleman, a long-time security staff member, who worked at 155 Fifth Street when it was a bank data center many years ago and has come full circle to help protect the same building, now renovated for a new purpose.

One quality we hold close to our hearts is our dedication to humanism. You'll read about The Pacific Promise initiative to enhance customer service for patients and further develop practice-ready graduates. This issue also profiles several of our recent graduates who are making an impact around the country.

We are excited to announce some new developments in our "Building Our Future, Embracing Our Legacy" fundraising campaign. The Pacific Dugoni family has rallied to raise more than \$20 million, more than halfway to our \$40 million goal. It's an impressive show of support for the future of our school. I encourage you to stop by our campus to see the results of your support.

We may be in a new location, but our alumni and friends will always have a place to call home in San Francisco.

Dr. Patrick J. Ferrillo, Jr.  
Dean



## Zuckerberg Shares Advice on Social Media in Dentistry

It's not surprising that the father of the founder of Facebook is a social media expert. He also happens to be a dentist. Dr. Ed Zuckerberg, whose son is Mark Zuckerberg, has been bridging the digital and dental worlds as an early adopter of technology in his dental practice.



PHOTO: JON DRAPER

Zuckerberg shared his insights at a prospective donor event on July 12 led by Pacific Dugoni Foundation (PDF) President Ed Bedrossian '86, Dean Patrick J. Ferrillo, Jr. and Jeff Rhode, associate dean for Development, at the new dental school. Co-hosted by PDF board members Drs. Tom Indresano, Ken Shimizu '85, '87 Ortho, Gabby Thodas '77, '95 Ortho and Dean Emeritus Arthur A. Dugoni '48, 75 graduates of orthodontics and oral and maxillofacial surgery and friends attended Zuckerberg's talk and then toured the new dental facilities at 155 Fifth Street. Drs. Don Montano and Rob Relle also presented "Orthognathic Surgery Using Clear Aligners" to round out the continuing education session.

During his talk, Zuckerberg covered the role of social media in the dental office and painted a broad picture of trends in social media in dentistry. He also discussed creating engaging content, involving staff in content creation, crafting messages for targeted demographics, holding contests and offering discounts on social media and much more. Attendees left with new ideas for using social media to grow their practices and deepen their relationships with patients.

## Retreat Unites Students, Builds Bonds with the Community

PHOTOS: BRUCE COOK

First-year dental students had an opportunity to participate in community service projects while getting to know their classmates on August 7 and 8. An annual tradition, the First-Year Retreat includes both a social and a service component as it seeks to build camaraderie among the class, while getting students involved in the broader San Francisco community.

Students participated in a range of volunteer activities held at the San Francisco Botanical Gardens, San Francisco Audubon Society, the Golden Gate National Parks Conservancy and Jumpstart. They helped with a variety of tasks including gardening, park maintenance and arts and crafts.

The second part of the retreat focused on building relationships among students. After hearing keynote speaker Mr. Gary Zelesky deliver a high-energy message on "A Passion-Centered Life," the class participated in team-building activities and ended the night with



a dinner and Red & White Fleet boat cruise on San Francisco Bay.

"The First-Year Retreat is a chance to build community from the inside out," said Kathy Candito, associate dean for Student Services. "We want to open students' eyes to the importance of building relationships and understanding the needs of those they serve—whether they are supporting classmates, patients or neighbors."



## Upcoming Events

Alumni Reception during CDA Cares  
Friday, November 21, 2014  
Sheraton Fairplex Hotel  
Pomona, CA  
(415) 929-6423

116th Annual Alumni Meeting  
Fri.-Sat., March 13-14, 2015  
The Fairmont Hotel, SF  
(415) 929-6423

The Legacy Ball  
Saturday, March 14, 2015  
Dugoni School of Dentistry, SF  
(415) 351-7179  
mschueller@pacific.edu

Pacific Pride Day  
Open House for Prospective Students  
Saturday, April 18, 2015  
Dugoni School of Dentistry, SF  
(415) 929-6434

## Atkinson Collection Skulls Take Up Temporary Residence at California Academy of Sciences

Three human skulls from the dental school's Spencer R. Atkinson Collection are among new specimens in the California Academy of Sciences' "Skulls" exhibition located in Golden Gate Park in San Francisco. Dr. Dorothy Dechant, Pacific Dugoni's museum curator for the Institute of Dental History and Craniofacial Study, says that the skulls are on loan for the exhibit, which runs through November 30, 2014.

"As requested by the academy, we were able to provide a male and a female skull illustrating bony facial features that distinguish the two sexes, and a juvenile skull showing characteristics typically found in the maturing facial skeleton and teeth," Dechant said.

According to the California Academy of Sciences website, the "Skulls" exhibit features more than 640 vertebrate skulls ranging from "an enormous

African bull elephant to a tiny elephant shrew."

The exhibit tells the stories of vertebrate animals and stretches 3.3 million years into the past to illustrate evolutionary changes.

The Dugoni School of Dentistry's Atkinson Collection is a world-renowned research and teaching resource housed on the fourth floor of the school's new San Francisco campus. The collection consists of more than 1,500 human crania collected by orthodontist Spencer R. Atkinson, primarily from autopsies and biological warehouses.



PHOTO: JON DRAPER



PHOTO: JOAN YOKOM

Visit [www.dental.pacific.edu](http://www.dental.pacific.edu) for News & Events

## Pacific Dugoni Continues Tradition of CDA Leadership



Dr. Walter Weber '76

Several Pacific Dugoni alumni have become part of the current leadership team of the California Dental Association (CDA). Dr. Walter Weber '76 was formally installed as president during the CDA's House of Delegates meeting in November in San Diego. Weber has been practicing dentistry for more than 30 years and runs a private practice in Campbell, California, specializing in family and cosmetic dentistry. Weber recently returned to Pacific Dugoni to speak at the 2014 White Coat Ceremony.



Dr. Natasha Lee '00

Weber succeeds current CDA president, Dr. James D. Stephens '82, also a graduate of the Dugoni School of Dentistry. Stephens runs a private practice in Palo Alto, California, with his wife and classmate, Dr. Susan Park '82.



Dr. Craig Yarborough '80

In other recent CDA leadership developments, Dr. Natasha Lee '00 was nominated and installed as secretary and Dr. Craig Yarborough '80 was nominated and installed as speaker of the house. These influential positions are both part of CDA's Executive Committee.

For nearly a decade and a half, Lee has provided care to patients in her practice in the Sunset District of San Francisco. She has taught restorative dental techniques at the school for more than 11

years and is currently an assistant professor and course director of dental practice management and jurisprudence. She is very involved as a leader in the American Dental Association (ADA), CDA and the San Francisco Dental Society. She has served on boards and councils at the local, state, and national level as an advocate and voice for patients and dental health professionals in addressing oral health care issues.

Yarborough currently serves as associate dean for Institutional Advancement and director of engagement, three-city emphasis. He has held numerous leadership roles at the dental school and many volunteer positions within organized dentistry. After spending 13 years in private practice in Lodi, California, Yarborough returned to his alma mater as a full-time faculty member in 1993. He has been a member and past chair of the CDA Presents Board of Managers, past chair of the ADA Council on Annual Sessions and a director on the CDA Foundation Board. He is a past president of the school's Alumni Association and a recipient of its Medallion of Distinction Award in 2005.

## Dr. Allen Wong Receives the 2014 Dr. Arthur A. Dugoni Faculty Award

The California Dental Association (CDA) Foundation Board has selected Dr. Allen Wong as the recipient of the 2014 Dr. Arthur A. Dugoni Faculty Award. The award is presented to an individual who displays exceptional leadership, innovation, collaboration, compassion, philanthropic spirit and integrity in dental education.

Wong will be honored by the 2014 CDA House of Delegates and members at a recognition event on November 14 in San Diego. He also will receive a monetary award, which will be used toward teaching caries risk management in special care dentistry, dental missions and inter-professional organizations.

Wong serves as a professor in the Department of Dental Practice and director of the Advanced Education in General Dentistry program. He is a diplomate of the American Board of Special Care Dentistry and has extensive experience in providing dental care to medically compromised patients and patients with special needs. He has staff appointments at California Pacific Medical Center, Highland General Hospital and Seton Medical Center.







## Berry Coleman | Coming Full Circle

Berry Coleman is back where he began. In 1985, he started working as a public safety officer at 155 Fifth Street, which was then home to Crocker National Bank. “My very first day on the job, the Wells Fargo Corporation took over Crocker Bank,” Coleman explains. “It was a merger—so we went from being Crocker employees to Wells Fargo employees.”

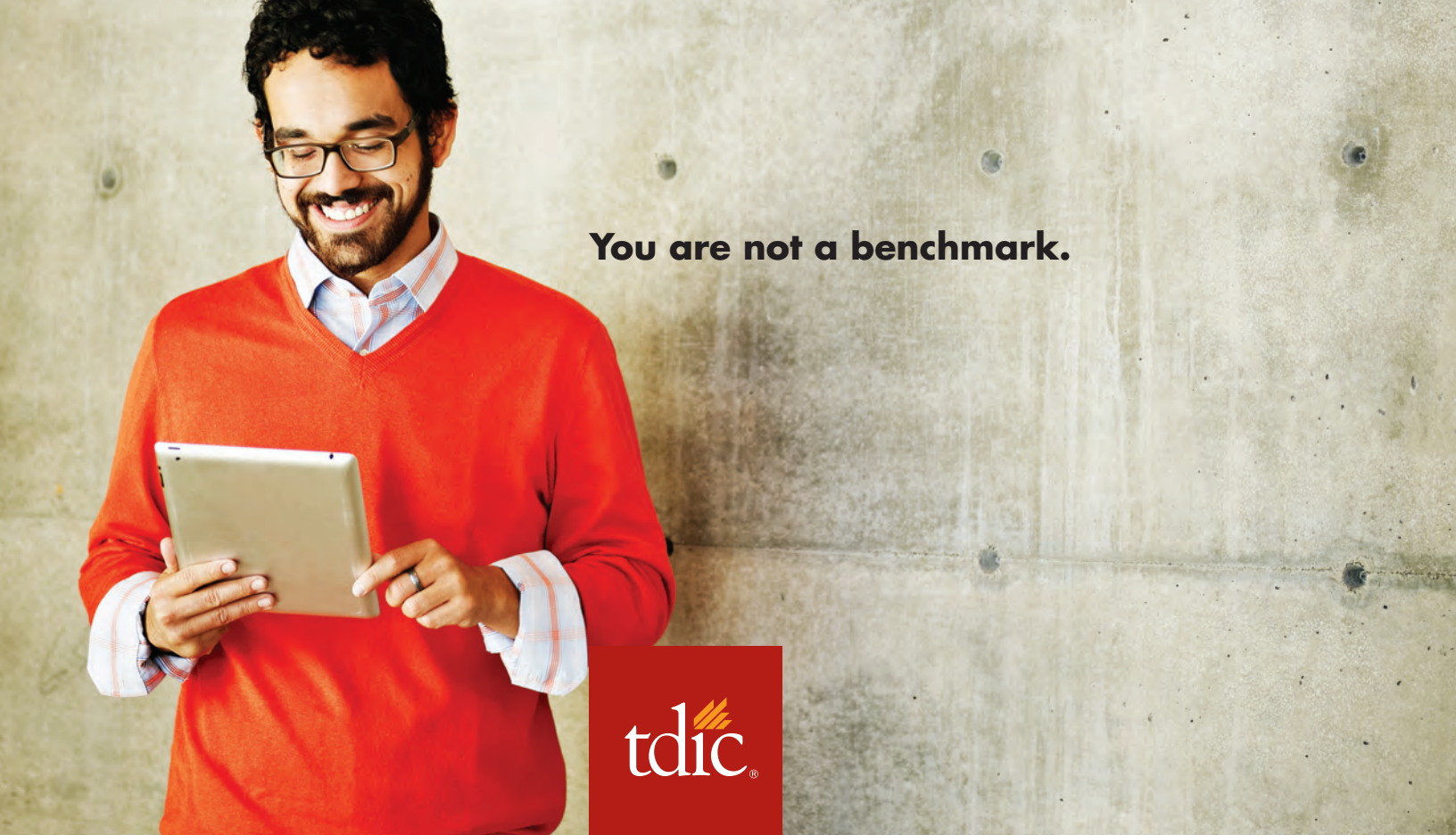
At the time, the facility served as a data operations center. Coleman recalls the building filled with hundreds of people processing checks, massive areas with computers and rooms that were temperature-controlled to protect the data. The computers were “a little primitive,” but Coleman describes it as an exciting time, “the dawn of technology.”

Coleman’s eventful first day at 155 Fifth Street in 1985 was just one data point in a web of coincidences. Before moving to California, he worked as a corporate security officer for America Natural Resources in his home state of Michigan. On his first day at work, the company was acquired in a hostile takeover. “I guess corporate

takeovers have a way of following me around,” he jokes. “It was a really odd coincidence.”

In January 1987, Coleman moved to a position as lead patrol officer at the Dugoni School of Dentistry—then located on Webster Street. He has worked for the dental school ever since, and this year, a twist of fate has brought him back to the location of his first job in California. “They say significant things happen in threes,” Coleman observes.

Almost 30 years after working at the 155 Fifth Street building,



**You are not a benchmark.**

And at The Dentists Insurance Company, we won't treat you like one because we are not like other insurance companies. We were started by, and only protect, dentists. A singular focus that leads to an unparalleled knowledge of your profession and how to best protect you in it. It also means that TDIC is in your corner, because with us, you are never a benchmark. You are a dentist first, last and always.

### **New Dentist Program**

**\$50** Professional Liability insurance for your first year

**45%** discount in your second year and 25% in your third

**Free** Risk Management seminar to help you practice safely

**Five-minute** short form and e-signature make the online application process a breeze.

Apply today at [tdicsolutions.com/newgrad](https://tdicsolutions.com/newgrad)

First year TDIC Professional Liability coverage rate depicted is for newly licensed and never practiced dentists in the state of California and is valid for a \$1M/\$3M coverage amount. Rates subject to increase per schedule in years two through eight until they reach maturity.

**Protecting dentists. It's all we do.®**

800.733.0633 | [tdicsolutions.com](https://tdicsolutions.com) | CA Insurance Lic. #0652783



One of the unique challenges is to keep an atmosphere of comfort and calm while presenting an image of authority.

viewing the site after its renovation as the new Dugoni School of Dentistry campus was a surreal experience for Coleman. “When I look at the bones of the place, I can visualize a lot of the data center,” he says. “It was a weird feeling because I could see the places where I used to patrol in the building, especially when walking through the construction site.”

Transition can be difficult, and Coleman and the security team have played a vital role in helping the Pacific Dugoni family settle into the new campus. The neighborhood itself is in transition, pulsing with a life of its own in an atmosphere that Coleman calls “kinetic.” He advises the school community to be patient and work together as they become attuned to their new surroundings.

As a sergeant in the Division of Public Safety, Coleman strives for a balance between being professional and personable. “One of the unique challenges is to keep an atmosphere of comfort and calm while presenting an image of authority,” he says. “The spirit of our department is of service and of helpfulness, being a conduit of information and matching people to what they need and where they need to be.”

He encourages others to be good listeners, to identify needs and to assess situations. “Each individual carries a different viewpoint, and you have to be cognizant that you can’t lump all people together,” Coleman says. “You have to learn to listen, that’s the first thing, and when you listen you’ll usually find out what you need to know.”

Coleman wipes the slate clean and starts fresh every morning. “I’m still learning every single day,” he says. “That keeps the job fresh for me and very rewarding.” It might be easy to grow cynical or complacent, but Coleman is constantly seeking opportunities for growth.

While Coleman spends his days keeping the calm on campus, he goes home to a “very quiet life in Oakland” with his wife, Sandra, “the light of my life; my very best friend,” to whom he has been married for 32 years. Coleman describes the two of them as “book-ish people.” He enjoys books on politics and history, recently finishing Edmund Morris’ three-part biography on Theodore Roosevelt. Ask him about film, and he launches into a discussion of his favorite film era, Italian Neorealism, and one of his favorite directors, Vittorio De Sica, whose poignant films captured life in Italy after World War II.

The Colemans also enjoy visiting art galleries to add to their African art collection, which they have carefully curated throughout



the years. “We don’t have a lot of stuff, but the stuff we have is something that we took a lot of time to pick out and did a lot of research and studied it,” he says.

There’s so much that goes on behind the scenes in the Public Safety that many may take for granted. Creating an atmosphere that is both welcoming and safe requires a sharp eye, careful listening skills, keen intuition and a good sense of humor. Coleman has the chance to hone those skills both at and outside of work, whether he is overseeing security at dental school events or browsing for the perfect piece of art to add to his collection.

What does Coleman make of all the coincidences in his career and life trajectory? “There’s a saying, life is a circle,” he says. “I feel that maybe my life is now coming full circle. And, we’ll see which way it goes.”



# AROUND CAMPUS

PHOTOS: BRUCE COOK, JON DRAPER, JOAN YOKOM



Above and below right: Students at the White Coat Ceremony in July  
Upper right: The 120th Commencement Ceremony

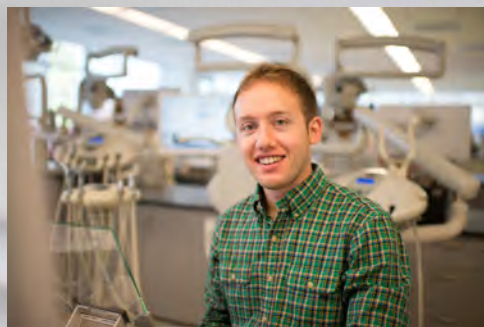




Above: Matriculating DDS and IDS classes gather on the new stairwell.

Middle left: The new Simulation Laboratory; Middle right: San Francisco Mayor Ed Lee visits the new school.

Below left to right: Students from the Class of 2017 Below right: Andrea Woodson holds a winning ticket from the "End of the Fiscal Year" raffle.





## New Programs Coming to San Francisco Campus

University of the Pacific will be expanding its academic offerings with the launch of three new programs at its state-of-the-art campus in the SoMa district of San Francisco.

Pacific's doctorate of audiology (Au.D.) program will be the only three-year accelerated audiology program in California. The program is expected to draw prospective students with a bachelor's degree in speech-language pathology, biology and pre-health, and an interest in the profession of audiology. In addition to classwork, students will participate in clinical experiences at the on-site audiology clinic and nearby medical and audiology centers, as well as the audiology clinic in Stockton.



Students will gain specific knowledge and skills to meet the requirements for the American Board of Audiology certification examination, and will receive career counseling. Potential career opportunities include work in hospitals, private practice and hearing centers. The program starts in fall 2015.

Music therapy is one of the fastest growing and most rewarding health professions today. Working professionals with a music or related degree can complete a flexible Music Therapy Equivalency program in San Francisco by taking evening courses for four semesters. Students will also complete a six-month clinical training internship with specializations matching the students' interests, talents and career goals. Students will gain specific knowledge and skills to meet the requirements for the Certification Board for Music Therapists (CBMT) examination. Pacific's music therapy graduates experience excellent board passage and job placement rates. This program will be offered in San Francisco beginning in fall 2015.



The data analytics field is growing and in need of qualified professionals. To meet this demand, Pacific plans to offer a master of science degree in data analytics. This year-long, three-semester program is designed for working professionals—with evening courses taught in the classroom in addition to an online curriculum. During the final semester, students will work in teams to complete an industry-sponsored data project. Graduates will gain technical knowledge, critical thinking skills and creativity to explore a number of opportunities in the fields of health, technology and business. This program is anticipated to begin fall 2015 pending Board of Regents approval.

To learn more about the University's new academic programs, visit [www.Pacific.edu/SF](http://www.Pacific.edu/SF)

## Pacific Again Ranked in Tier One of National Universities

University of the Pacific ranked seventh among California's top private national universities in the recent *U.S. News & World Report's* annual Best Colleges ratings. Competing in the national university category, a group of 268 public and private institutions that includes Princeton, Harvard and Yale, Pacific ranked 116th overall, 15th statewide and seventh among California private universities.

Yet unlike some of the top-ranked California schools in the national category—including Stanford, Cal and UCLA—Pacific is a school where more students have a good chance of winning admission. The magazine again singled out Pacific, where the student-faculty ratio is 14 to 1, as an "A-Plus School for B Students"—a top-tier university where talented students with less than a 4.0 GPA have a shot at acceptance.





# Where do our students go after graduation?

APPROXIMATELY HALF OF ALL DUGONI SCHOOL OF DENTISTRY GRADUATES APPLY TO POSTDOCTORAL PROGRAMS each year, and more than 90% are accepted, according to statistics kept by Dr. Eddie Hayashida, associate dean for administration. Just slightly less than 50% immediately enter private practice, and a handful go into the military. For particulars, several graduates from the past 10 years spoke about where they landed after Pacific Dugoni and how the dental school prepared them for what they're doing now.



PHOTO: MARCI B PHOTOGRAPHY

Right after graduation, Dr. Adam Kirkpatrick '10 bought a practice in Lebanon, Oregon. "The previous dentist left on a Thursday. I walked in on Monday, and said, 'Hi, I'm your new dentist.' And off we went," says Kirkpatrick.

*Returning to his Roots  
Lebanon, OR*

Though owning his own practice was always a dream, Kirkpatrick says he was open to other options after graduation. But when the opportunity came up, his brother and father, also dentists, convinced him he could do it, and he went for it. Why Oregon? "This is where my wife and I are from, and we knew we wanted to be near family," he explains.

Kirkpatrick's practice and family are thriving. "I can't think of a single better life for myself," he says. "I have an excellent schedule. I can spend a lot of time with my kids and my wife. For the right person, buying a practice is absolutely the dream."

Kirkpatrick credits both the technical skills and the culture at the dental school that allowed him to step immediately into private practice. "The school does a great job of preparing us clinically, so by the time we graduate we know enough to hit the job running," he explains. "But the number one thing the school did to prepare me was treating me as a valuable person. The humanistic model is absolutely amazing," Kirkpatrick adds. "It develops people to be confident and feel good about what they're doing. And that in turn helped give me the confidence and skills I needed to succeed."

## Service to her Country & School



PHOTO: NAVY HEADSHOT - NMCB THREE PUBLIC AFFAIRS OFFICE, 2007

When Dr. Jessie Vallee (Stachowiak) '04 graduated from college in 2001, she decided to participate in a U.S. Navy Health Professions scholarship program. Vallee has a history of military service in her family (two grandfathers both served in Korea), and it seemed like a good idea to be able to pay for dental school and see the world at the same time, she explains. But things changed. "The September 11th attacks happened during my first year of dental school, and I knew after that point, my life was going to be a little different than I envisioned," says Vallee.

After graduation, Vallee went to San Diego for an AEGD residency program where she rotated through the different specialties of dentistry and gained more confidence and skill. Then she was sent to a battalion of Seabees, the U.S. Navy's construction unit, and then was deployed: first to Fallujah, Iraq, for four months and then to Kuwait.

What was it like to be in a war zone? "It was a lot of different things," says Vallee. "I'm definitely a stronger individual after having experienced it."

As the only woman officer in her battalion, "it was lonely at times," says Vallee. But she made friends with the dentist in the surgical unit at Fallujah, got a chair and helped out. "I treated some of the Iraqi security force, and they were always really gracious and grateful and that was rewarding," says Vallee.

And her battalion had a pretty rewarding mission itself, she adds. "My troops built the first polling site for the very first Iraqi election in 2005."

After three years of active duty in the military, Vallee went into private practice and began teaching one day a week at her alma mater, the Dugoni School of Dentistry. "I enjoyed patient interaction, but teaching that one day was the highlight of my week," she explains. Her time in the military had changed her. "It really taught me a feeling of camaraderie and connection to my peers and to work towards something bigger than yourself."

Teaching filled this need. "It's kind of cliché when teachers talk about that 'aha moment' with a student when the light bulb goes on" says Vallee. "But it really is true; you live for those moments." Vallee completed an ADEA/AAL Dental Educators Program and is currently an associate professor in the Department of Integrated Reconstructive Dental Sciences and director of preclinical education.

In addition to her interaction with students, Vallee says she enjoys the camaraderie and collegiality of other faculty members. "It's the humanism and the culture the Dugoni School of Dentistry promotes that really prepared me for thriving in a collaborative atmosphere," she explains. The culture here is not every person for him or herself. Everyone works together for everybody's well-being, and that's always been the case."



# Small Town America Scobey, MT



PHOTO: TERESA HARDING (WIFE OF DR. RODGER HARDING '06)

The town of Scobey, Montana, population 1,000, is “a small farm town, way out in the middle of nowhere,” says Dr. Jesse Cole '06. And that’s just fine with Cole who grew up in Kansas and prefers small towns, “the smaller the better,” he adds.

How did he end up in Scobey? “Straight out of school, I bought into a practice with another dentist in Idaho with the understanding that after a few years, he would sell me the rest of the practice,” explains Cole. But that didn’t happen. The recession hit, the other dentist didn’t retire, and since he had agreed not to open another practice in the area, Cole needed to find a practice elsewhere.

When a dental practice agent found an opportunity in Scobey, Cole went to check it out. He’d been to Montana several times to visit family while growing up. The previous dentist had retired and couldn’t find anyone to buy his practice, so he had closed his doors. “I came, looked over his books and saw it was actually a fantastic practice, and bought it from him,” says Dr. Cole. Four years later he and his family couldn’t be happier.

“We love it. It’s classic, small-town America,” says Cole. “My children walk to school and to the park. They walk everywhere all over town, anytime day or night without fear. We leave our keys in the car at all times. We never lock the doors of our house at any time. The best way to describe it is like going back in time 20 or 30 years.”

And while the dental school prepared him very well technically and diagnostically to run his own practice, Cole says he also received excellent training in the “soft skills of patient communication” crucial to his success. “Pacific Dugoni trains you well to communicate, to know your diagnostic skills and to be able to present well to people so they clearly understand what their choices are and why. I think that’s key.”



After graduation, Dr. Heather Ballentine '10 went to New York's Jacobi Medical Center to complete a two-year training program in anesthesia. "It's not a recognized specialty," she adds. But it is one where she saw a tremendous need.

During her training, Ballentine worked in dental clinics with adults and children with special needs. Then she moved to the Charlottesville area of Virginia, where she's one of five dental anesthesiologists in the state.

"In Virginia, there are a lot of children who don't have access to care," explains Ballentine. "The patient waiting list for the hospital, in some of the areas we travel to, is a year and a half long. In other areas, the dentists are not able to get hospital privileges. So for many of these children there aren't many options—waiting until they have an abscess or an emergency, and then they have a traumatic experience." Most of those families do not have dental insurance so there is such a great need to serve these low-income children. Ballentine and a partner are in the process of establishing a non-profit organization to address this need.

And she credits her experience at the Dugoni School of Dentistry with helping her on this path. "Dental school provided a lot of opportunities to serve the needs of the community," explains Ballentine. "I was active in the Project Homeless Connect program, and received one of the community service awards at graduation. I felt that there was a great opportunity to see the needs in the community, make a plan and be able to address those needs"—exactly what her non-profit is all about. "And, I think Dugoni School of Dentistry really helped to create independent thinkers," Ballentine adds.

As for the children who need her expertise, she's booking months in advance. Now these families have an option, and they're grateful. "It's definitely been a positive influence for the families," says Ballentine. "The children have had much better experiences. And, if some waited a few days longer without treatment, the children would have ended up in the hospital," explains Ballentine.

"I'm happy to be doing it," she says of her work. "And, I feel lucky I have the skills that enable me to treat these children."

PHOTO: JEFFERY PIERCE



A Passion to Serve  
Charlottesville, VA



## Taking on Texas Dallas, TX

Though it was difficult to leave the Bay Area, Dr. Akhil Reddy '08 moved back to his home state of Texas after graduation. After associating for one year in a private practice, Reddy began opening up other practices with other dentists in the area. Today, he is one of the founders of a large, centralized management company that has about 50 dental practices and about 110 participating dentists in Texas, Louisiana, Oklahoma, New Mexico and even Alaska.

How did he go so quickly from being an associate dentist to helping run a large dental management company? "I was always really interested in the business side of dentistry," explains Reddy. "Though, I never thought I would go this far into it." But as a University of Pacific undergraduate student, his favorite classes were in economics. And business ventures and learning new things was always his passion. "I was trading stocks in high school," he adds.

When he first started out, Reddy estimates he spent nearly 100% of his time practicing, with very little time spent on the business side. Now it's nearly reversed. "About 90% of my time is the business and management side, and about 10% to 20% is practicing," he says.

But Reddy also helps train other dentists how to manage aspects of their practices and their associating dentists, "and I have a lot of oversight clinically in how things are done and making sure patients are happy," he explains.

His oversight has enabled him to see many dentists who've graduated from other schools. "I tell everyone that Pacific Dugoni is the best dental school in the world," says Reddy. "I've seen the differences between dental schools in the clinicians' work. There are some great dental schools, but Dugoni School of Dentistry is by far the strongest clinically, in my opinion," he adds.

Reddy plans to return to the Bay Area to start another business venture with a classmate, though he'll return frequently to Dallas to help with the management company.



PHOTO: JOEL CHAN PHOTOGRAPHY

*Christina Boufis, PhD, is a freelance health and medical writer from the East Bay.*

# Like The Golden Rule, THE PACIFIC PROMISE Delivers Respect

By Marianne Jacobson

“The promise to treat Dugoni family members with the respect that they deserve and need” is how Dr. William Sands, assistant professor in the Department of Dental Practice and vice chair of the clinical practice strand, describes The Pacific Promise initiative. “It is a school-wide initiative to raise the bar in terms of overall customer service,” says Dr. Russell Woodson, assistant professor in the Department of Dental Practice and inter-clinic, quality assurance and International Dental Studies coordinator. Dugoni School family members include patients, students, staff, faculty, alumni and neighbors. “We aspire to treat them as we’d like to be treated ourselves,” adds Sands. It’s the Golden Rule applied to today’s dental practice—and those spearheading the initiative believe it makes good business sense as well. So do others, including Dean Patrick J. Ferrillo, Jr., who is a strong proponent of the initiative and is lending it his support.



} **The Pacific Promise customer service initiative will be rolled out in phases, first to patients and students, then to faculty, staff, alumni and the community.**

The new campus and The Pacific Promise share the common goal of creating a positive impact on all constituents at all touch points. “First impressions are very powerful,” asserts Sands. “There is nothing in the world like our new building...but buildings without a family are somewhat hollow. The Pacific Promise is who we are and how we want to fill that space.”

The Pacific Promise customer service initiative will be rolled out in phases, first to patients and students, then to faculty, staff, alumni and the community. “We have always been customer-friendly and we have always put patients first. What’s different now is a much more coordinated effort on all levels to provide better service to all of our key constituents,” explains Woodson. The initial focus of The Pacific Promise was to support the patients and the opening of the new downtown campus. With the new clinic up and running, the initiative’s focus is now shifting to students.

### **Taking Root**

Co-leaders Sands and Dr. Richard Fredekind, associate dean for clinical services, conceived The Pacific Promise in early 2013, believing that the new building brought the opportunity to rethink customer service across the board. “The two of us spent lots of hours trying to define who is in our family and what respect means. We have the best dental school facility in the world, so we must reflect that with the best service in the world,” explains Sands. Together the two crafted the plan and the language for The Pacific Promise. Fredekind adds, “We have been working on many of these ideas for years, but we wanted to go after them in a much more organized fashion, so The Pacific Promise coalesces these multiple initiatives under one umbrella.”

While the goals are lofty, the implementation tactics are specific and comprehensive. Twelve functional areas have been identified as critical for the continued refinement of clinic processes and practices. The Pacific Promise will focus on: the patient intake process; patient relations; patient access; efficiency (including timely patient care); billing; referrals and quality assurance; telecommunications; communications and training; faculty (including educational, relational and technical aspects of student-faculty interactions); website; social media and advertising and safety.

Goal setting and measureable outcomes are important parts of the program. Examples of visible objectives are to decrease the length of dental appointments, improve efficiency and productivity, improve comprehension of billing statements, improve the intake process and give patients access to online appointments and health records. According to Woodson, we need to “be more efficient at everything we do.” Key practice indicators and incentives have also been put in place for students, who receive individual progress reports every five weeks highlighting their proficiency on 13 metrics.

} **The new campus and The Pacific Promise share the common goal of creating a positive impact on all constituents at all “touch points.”**

# RAISE THE BAR

## Early Progress, More to Come

Already there are some early successes. Patient intake time has been cut in half. In telecommunications, all phone messages are now returned the same day. New staff members have been added to support The Pacific Promise goals—a patient relations liaison, to help decrease unsatisfactory patient experiences, and an inter-clinic referral coordinator. And, facilities are more patient friendly in a variety of ways. Fredekind says that the elimination of overhead paging has created a more peaceful atmosphere. Woodson added that there is “better flow than ever” in the eight group practices.

} Goal setting and measurable outcomes are important parts of the program.

Students and patients alike are witnessing differences in customer service. Waiting areas are more peaceful and quiet. “I love the fact that staff are not walking through yelling names anymore,” observes patient Stephen Shoemaker. Instead, group practice waiting areas are more private and students are not spending valuable time searching for their patients.

Other program components will launch this fall. A new billing statement format will be easier for patients to read and understand, directly addressing a frequent complaint of current patients. All customer surveys are being rewritten to be more relevant. An electronic tracking system that will issue reports to key partners in a timely fashion is under development. This will allow for coordinated referrals to help students better manage their patients’ needs. Team leaders in the quality assurance strand are also considering electronic kiosks to simplify patient feedback and increase participation rates.

## Capping Off a Better Patient Experience

With 10,000 patient visits per year, the patient experience is at the core of the Pacific Dugoni clinical program. Both the facility and The Pacific Promise initiative contribute to the improvements in security, tranquility and intimacy. The state-of-the-art SoMa campus reflects a deliberate effort to improve the patient experience.

Operatories are set up to be more welcoming, roomy, airy, private, secure and comfortable. Shoemaker comments, “I recently fell asleep during drilling because I was so comfortable and things were so quiet.” A patient for 10 years, Robert Barone, reveals that he “liked the latest technology and tools, particularly the quieter electric treatment instruments.” Matthew Kelly, Class of 2015, enthusiastically shares that “patients love the new space!” He also notes that “toe-in” exam chair positioning in the new operatories is better for patient privacy. Sharing Kelly’s enthusiasm is fellow Class of 2015 student, Tyler Kisling, who says that patients “like the gadgets and newness” and raves about the improved acoustics which are ideal for student-patient communication, team building and small group practice sessions.

The new facility also improves the patient welcome process, an important component of the overall customer service experience. A new appointment-based ticketing system aims to improve the flow of traffic. Patients used to wait, often standing, in a huge impersonal reception area, sometimes for a long time before their name was called. “Now, no one ever has to stand,” Woodson proudly declares. Instead, patients wait in intimate, comfortable and quiet group practice reception areas.

## What the Promise Means for Students

Students are more aware of customer service than ever before. “The old school was very technical, but decades ago there was not enough focus on training soft skills like commu-



# CUSTOMER



**With 10,000 patient visits per year, the patient experience is at the core of the Pacific Dugoni clinical program.**

nication and customer service,” recalls Woodson. These skills have real-world implications that will benefit Dugoni School of Dentistry students and their patients. Sands explains that the main goal is to graduate practice-ready professionals and “that is precisely what The Pacific Promise hopes to accomplish.”

Every aspect of the building and curriculum takes student education to the next level. Program improvements include: team meetings in small and quiet huddle rooms, close proximity of small group practice leaders’ offices, separate reception areas for each group, modern new facilities and technology. Since there are eight dental practices in the building, students are assigned to a practice and they are learning how to run a practice every day. The Pacific Promise team leaders strive to enable students to have a more fulfilling experience at the dental school, including completing more procedures, improving communication skills and taking newly revamped functional courses in practice management, marketing and basic finance.

### Tapping Alumni Wisdom

The Pacific Promise offers the school’s already engaged and devoted alumni more opportunities to interact with the school and students. “They love their school and the core value of giving back is built-in from day one,” says Sands. The recently initiated patient ambassador program highlights alumni pride and early involvement with The Pacific Promise. One month before the new clinic opened, alumni were emailed and asked to participate in the grand opening. The response was enormous! Nearly 100 alumni donated their time during the first weeks of the new academic year to usher, guide and answer questions for patients—capturing the core customer service goal of The Pacific Promise initiative.

### Teething Pains

The Pacific Promise program is still in its infancy, and there is still room for growth and development. Certain elements of the initiative are still not well-defined; details of the staff, faculty and alumni goals and strategies have yet to be crystallized. Fredekind acknowledges that certain goals will develop over time—for instance around treatment outcomes and job satisfaction. In addition, some patients are still adjusting to the new check-in system, technology and security.

While new high-tech kiosks and increased support personnel staff the lobby, some patients find the new process confusing and don’t yet recognize the benefits of the changes. Finally, the initiative has not yet permeated the culture, and some members of the Dugoni School of Dentistry family are not aware of its existence or its goals. Training is a big part of the solution. “The Pacific Promise outreach is currently being solidified all over campus,” says Dr. Craig Yarborough, associate dean for Institutional Advancement.

### The Promised Land

The Pacific Promise will “make the experience better for all of the people in the building,” predicts Fredekind. Sands adds, “The Pacific Promise is the promise to fill the wonderful light, bright space with the best Dugoni family we can be.” Once this program takes root and reaches its objectives, Dugoni School’s leadership in dental education and patient care and its respect for its patients will be unmatched. The Pacific Promise is a noble commitment to embody the school’s mission, offer leading customer service and build upon the golden opportunity offered by its new, world-class facilities.



**The Pacific Promise offers the school’s already engaged and devoted alumni more opportunities to interact with the school and students.**

*Marianne Jacobson, BA, MBA, is a freelance writer from Marin County.*



*Homage to*

# *Webster Street*

A personal narrative for the  
dental school community

by Dr. Eugene LaBarre

PHOTO: JOAN YOKOM

Dear everyone,  
Sometime on Friday, June 20, 2014, the lights went out for the dental school at 2155 Webster Street. Finding it difficult to just leave, I send you some memories and thoughts of the place.

After all, it was alma mater to more than 7,000 University of Pacific degree recipients, a reliable, excellent oral health resource for the citizens of Northern California, an agreeable workplace for its employees and the home of the Dugoni School of Dentistry during its Golden Age and as it emerged into the national spotlight. I'm guessing there were more than three million patient visits between ribbon-cutting in 1967 and the end of clinic last week, a substantial balance sheet that we should not forget.

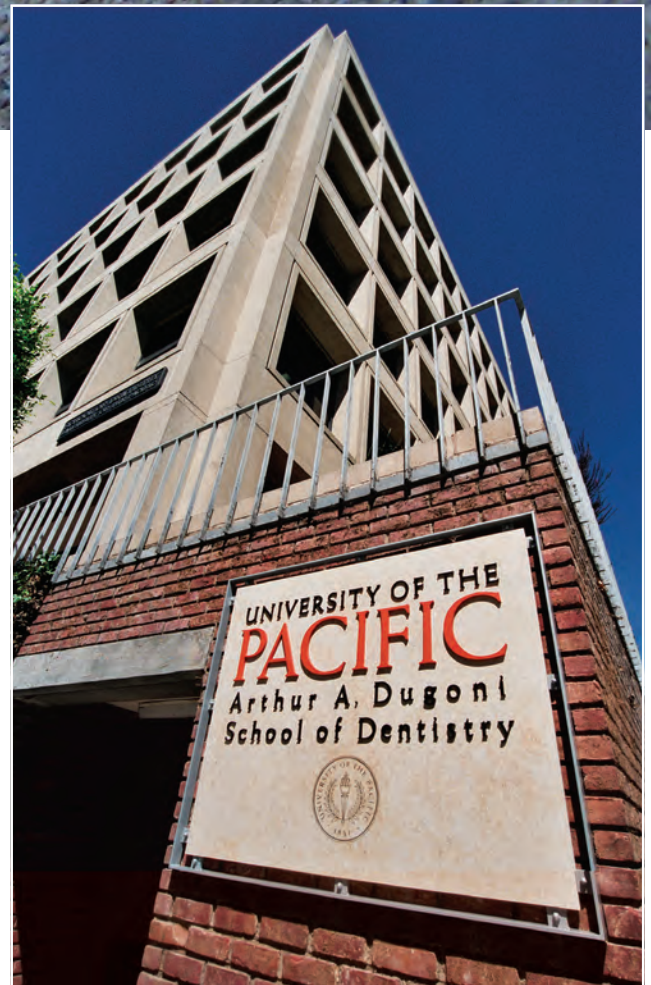


PHOTO: JON DRAPER



### BUILDING SPECIFICATIONS

LENGTH: 241' WIDTH: 127' HEIGHT: 152'  
VOLUME: 3,010,470 cubic feet  
GROSS FLOOR AREA: 222,070 square feet  
Construction required 14,000 cubic yards of concrete. Completely air conditioned for year 'round comfort. Equipped with sprinkler fire protection system.  
Over three acres of clinics, laboratories and classrooms with the most modern equipment available.

PENTHOUSE MECHANICAL ROOM  
3 gas-fired boilers (3,750,000 B.T.U. for heating; 700 tons air conditioning capacity).  
Electronic elevator control system for four elevators. Complete mechanical room floor floats on foam insulation to isolate machinery noise. Sidewalls of the penthouse are copper sheathed for maximum durability.

AUXILIARY POWER  
75 KVA emergency generator.

ORAL EVACUATION SYSTEM  
Special system serving mobil UnitCabs at each dental chair. Also compressed air supply.

NINE FLOORS  
6 floors above grade, 3 floors below grade.

PROJECT COST  
Structure, fully equipped: \$8,900,000.  
Mr. Karl Ogrey, Field Supervisor

Unfortunately, buildings do not rate feminine personal pronouns like countries and ships so “it” will do. It was designed and constructed by Skidmore, Owings & Merrill (one of the largest architectural and engineering firms in the world and a pioneer of “glass box” skyscrapers). The 2155 Webster Street building has a structure of poured-in-place reinforced concrete. The building is described by the 2010 Property Assessment Report:

“The exterior is expressed in tan precast concrete panels and punched, recessed, bronze anodized metal-framed windows with tinted glazing. Windows are of uniform size.”

Objective architecture critics (including my daughters) might describe it as a late modernist commercial high rise of prominent siting and modest street appeal—conforms with the neighboring medical campus and Kennedy Tower, but argues with the Victorian homes and businesses in that area of Pacific Heights. Not quite an ivy tower (even though it has plenty of that plant on the Sacramento Street wall); the large brick plaza has potential for kite-flying or wind-farming; great location, location, location!

The interior doesn't need description (we all know it so well!), but remember how often it was remodeled and repurposed? Learning and working at 2155 Webster included the physical challenge of negotiating construction zones. Very little of the interior remained original—parts of the fourth and sixth floors come to mind—and some areas were redesigned several times. Not only was the building functional and purposeful, it was modernized to an impressive degree. The constant attention to optimize comfort, convenience and appearance, along with expert maintenance, gave 2155 Webster Street the reputation of “The Ritz-Carlton” of dental schools.

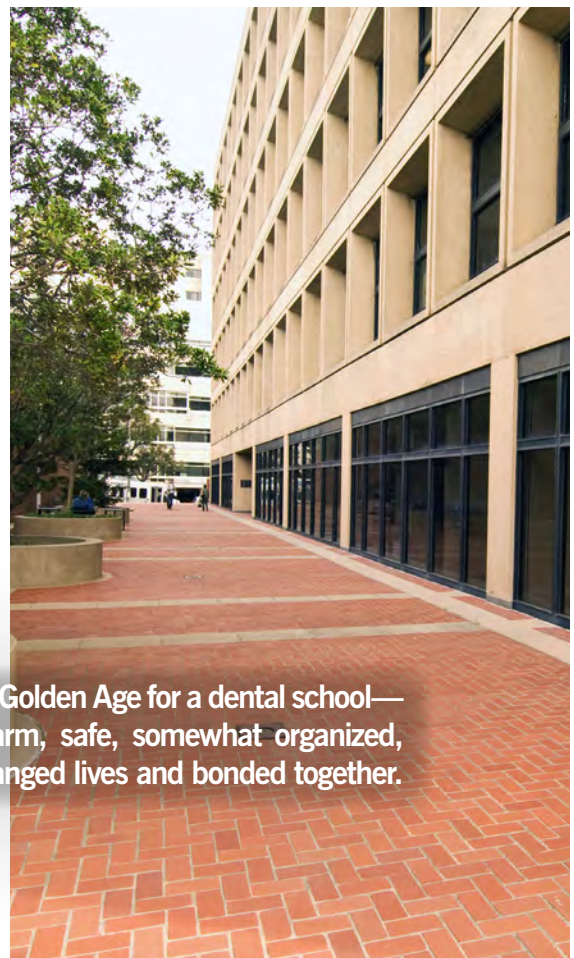


PHOTO: JON DRAPER



Reconstruction in progress

PHOTO: ARNOLD EILERS

Bricks and mortar don't make a Golden Age for a dental school—they kept the humans dry, warm, safe, somewhat organized, while we did our best work, changed lives and bonded together.

There were some terrifying moments. When one moves to San Francisco from somewhere else, it takes a while to acclimate to earthquakes. During minor events, 2155 Webster Street would creak in a mild way, and the floor would lurch a little. I was standing in the Sacramento Street doorway when the 1989 Loma Prieta earthquake struck hard and I was thrown against the door frame as the building made a loud cracking groan. Upstairs some lab solvents and bookcases fell onto the floor, and equipment in the penthouse on the roof was damaged, but the severe damage was elsewhere in San Francisco. As an emergency response facility, the dental school was open during the following days when businesses and schools were closed and people were asked to stay home. For a short time, the only commute option from the East Bay was by ferry—the Bay Bridge was damaged and BART thought the transbay tube might be damaged too. At the dental school, we did endless denture adjustments to relieve sore mouths caused by worry and anxiety about the “next big one.”

Once there was a scary situation when the San Francisco SWAT team stormed the clinic after lunch. They had received a call that an armed, dangerous and wanted gang member was in the dental school. I was in the clinic when these serious, fast-moving characters in flak jackets came through the clinic entrance with guns out, motioning for us to get the hell out of the way. Anticlimax, it was a false alarm, no gang guy—just a very surprised dental patient sitting in the wrong chair.



Groovy 1960s clinic decor

PHOTO: ARNOLD EILERS

close the sidewalk below the window; we were sure the glass was going to break out and cut our heads off.

But there were a hundred high times for every low one at the Dugoni School of Dentistry. How about the Blue Angels buzzing the roof during Fleet Week each October? Or, how about the times the ADA came to San Francisco and we had an open house at 2155 Webster for the entire dental profession? Remember all the graduation weeks, and the huge celebration we had when the school was named the Arthur A. Dugoni School of Dentistry? Those are great, great memories.



Loma Prieta aftermath

PHOTO: ARNOLD EILERS

There were delightful patients over the years. Back in the day, Raymond Burr (from TV's *Perry Mason* and *Ironside* shows) came to the school, and so did Jeanette Powell (she and her husband bequeathed \$100 million to the University of the Pacific). For me, Del Martin and Phyllis Lyon were the most memorable student clinic patients—they were San Francisco's celebrity lesbians and gay rights activists, the first same-sex couple married by former Mayor Gavin Newsom. During appointments they patiently shared their considerable life histories with our students, describing their pioneering efforts to change legal, religious and social attitudes at a time when homosexuality was considered criminal behavior. They are really wonderful people.



Former University President Donald DeRosa, Dean Emeritus Arthur A. Dugoni and Dr. Robert Christoffersen at the dental school naming event, August 27, 2004

PHOTO: BRUCE COOK



Then there was Hook Mitchell from West Oakland, one of the greatest street basketball players of all time, who schooled NBA stars Jason Kidd, Gary Payton, Antonio Davis, etc. He was known for a 50-inch vertical leap and 360 slam-dunking over Honda Accord cars. After run-ins with substance abuse and the law,



PHOTO: JON DRAPER

Hook came to the dental school for a smile rehabilitation. He was a big hit with our students, showing them his moves and his video documentary, while encouraging them to keep on the “straight path” and to follow their dreams. At the end of his treatment, I had Hook do a standing jump test with a pencil—36 inches in street shoes, no warm-up. His pencil mark was a hook, way way up on the wall of the 5th floor stairwell landing, next to Dr. Yarborough’s office. It may still be there, but not for much longer.

Come to think of it, it’s not really about the building; it’s the people in it. Bricks and mortar don’t make a Golden Age for a dental school—they kept the humans dry, warm, safe, somewhat organized, while we did our best work, changed lives and bonded together. Some of the best who were ever in that building ended it there on a high note: Rhonda Bennett, Karin Johnson Lucero, Duke Dahlin (who could make the Sphinx laugh), Dr. Dennis Weir, Dr. Ryle Radke, Dr. Joel Cohen, Dr. David Nielsen and Dr. Bill Carpenter. You can’t say more about the building than to list the great people who closed it down.

I also want to give a shout out to the dental school’s longest serving full-time faculty member, Dr. Bob Christoffersen. He graduated from Pacific on Mission Street in 1967, then helped move to 2155 Webster Street that year, and has been in the building

from opening to closing, all 47 years of its existence. Bob was also the person most responsible for renovating and repurposing the Webster Street facility without causing a single missed beat in the academic concert—our own steadfast and loyal phantom of the opera.

I have to recognize our fearless leaders—and I mean no fear. It took imagination and a lot of guts to come up with a plan to leave 2155 Webster, buy a property, sell the old properties, build a new dental school, then move the whole damn bunch without upsetting the opera—whew! Dean Pat Ferrillo was Pharoah, Drs. Nader Nadershahi, Richard Fredekind and Roy Bergstrom were the generals, and a lot of other people helped build the pyramid. University President Pamela Eibeck and the Board of Regents courageously supported the plan to move the dental school, and let’s not kid ourselves, they would have taken the shrapnel if the scheme blew up. My hat is off and I am in awe, seriously.

Lastly, I’ll never forget the giant himself, Art Dugoni. This week I saw him quietly loading his office things into his car at 2155 Webster Street, for the move downtown. He’s the guy who has his name on both buildings, the old and the new. And, he is the one most responsible for the success of the School of Dentistry—past, present and future—his legacy lives on at 155 Fifth Street.

So, okay old building, time to go now. You’ve really been a great “it” for us, you gave us a tremendous run. We wish you luck in your new life; we’ll certainly miss you and the Fillmore neighborhood. But truthfully, don’t take an ego trip. We moved out and we are moving up. The future is incredible for us.

With much love and affection to 2155 Webster Street,

*Gene LaBarre*

---

*Eugene LaBarre, DMD, MS, is an associate professor in the Department of Integrated Reconstructive Dental Sciences.*

PHOTO: JOAN YOKOM





# ALUMNI SCENE

Dr. Colin Wong '65 in front of the new student store ▶

PHOTO: JON DRAPER

116th Annual Alumni Association Meeting ▼

PHOTOS: RICHARD MAYER



Alumni at the Del Mar Thoroughbred Club ▶





**First-year Welcome and Cioppino Dinner ▲**

PHOTOS: JON DRAPER

**Alumni gather for a reception in our new building during the CDA Fall Session ▼**

PHOTOS: JON DRAPER



## Pacific Dugoni Fundraising Campaign Passes \$20 Million Mark

The “Building Our Future, Embracing Our Legacy” campaign to support school’s future is now more than halfway to its \$40 million goal.

Supporters who believe in the Arthur A. Dugoni School of Dentistry’s commitment to excellence have rallied to raise more than \$20 million to support the school’s new San Francisco facilities, its people and its programs.



Campaign funds will support the completion of, and ongoing operations at, Pacific Dugoni’s new campus, which opened to students and patients this July. The building features a state-of-the-art simulation laboratory, flexible learning spaces, new group practices and specialty clinics, modern research labs, study spaces and common areas for the school family.

The “Building Our Future, Embracing Our Legacy” campaign is a multi-year, \$40 million fundraising effort led by the Pacific Dugoni Foundation, the school’s fundraising arm. The

[www.dental.pacific.edu/campaign](http://www.dental.pacific.edu/campaign)

group’s mission is to ensure that the dental school has the resources it needs to realize its vision, mission and goals. The campaign co-chairs on the foundation board are Mr. Gary Mitchell, Dr. W. Ronald Redmond ’66, Dr. Gabby Thodas ’77, ’95 Ortho and Dr. Gary Weiner ’66.

“Thank you to everyone who continues to support Pacific Dugoni’s ambitious vision to be the global leader in dental education,” said Dean Patrick J. Ferrillo, Jr. “We are at a very exciting time in the history of our school. Our first-rate facilities will help us provide a world-class dental education for our students and welcoming care to our patients.”

“This is an important milestone we couldn’t have reached without the support from so many people in the Pacific Dugoni family and others in the community,” said Dr. Edmond Bedrossian ’86, president of the Pacific Dugoni Foundation. “As people learn about the impact that Pacific Dugoni has on our students, patients and wider community, they are inspired to get involved with this exciting campaign. We will succeed thanks to the strong leadership of Dean Ferrillo and the hard work of Jeff Rhode, associate dean for Development and his team.”

A new web site at [www.dental.pacific.edu/campaign](http://www.dental.pacific.edu/campaign) launched as the campaign reached the halfway mark towards its goal. It provides details about how the

new facilities will support the school’s people and programs, and features photos, videos, floor plans, a list of donors, testimonials from members of the school community, an on-line giving page and more.

Alumni, friends and others interested in touring the building or learning about naming opportunities for rooms or individual operatories are invited to contact Jeff Rhode, associate dean for Development, at [jrhode@pacific.edu](mailto:jrhode@pacific.edu) or (415)749-3349.

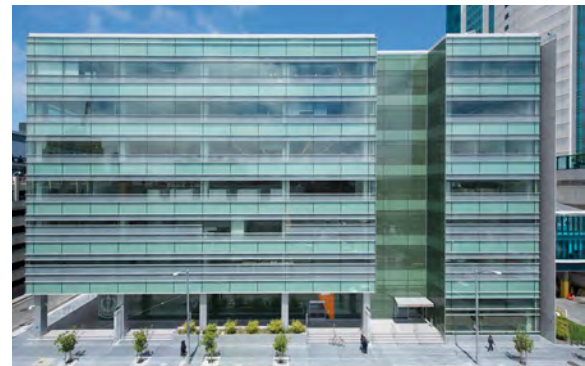


PHOTO: JON DRAPER

# > 20M



## Pacific Dugoni Foundation Welcomes Drs. Adkins '04 and Low '76 as New Board Members

Two Dugoni School of Dentistry alumni who have given back much of their time, talent and other resources to their profession and school are the newest board members of the Pacific Dugoni Foundation.

The board plays a key role in driving philanthropic initiatives such as the “Building Our Future, Embracing Our Legacy” campaign for the dental school’s new facilities, the Pacific Dugoni Annual Fund, scholarships, endowments and other fundraising programs. New board members pledge a gift of at least \$100,000 to support the campaign for the dental school’s new facilities, one of the philanthropic priorities identified by the Pacific Dugoni Foundation. The following two new board members were inducted at the foundation’s fall meeting in October.



*Dr. Artemiz Adkins '04 addresses the crowd at the 2014 Annual Alumni Meeting.*

PHOTO: RICHARD MAYER

**Dr. Artemiz Adkins '04** (nominated by Dr. Patrick J. Ferrillo, Jr. and Mr. Gary Mitchell)

A proud Pacific Dugoni alumna, Dr. Artemiz Adkins is a member of the Class of 2004 and currently serves as president of the dental school’s Alumni Association. She and her husband, Garrett, reside in Scottsdale, Arizona, where they co-founded Adkins Center for Dental Medicine.

In 2010, she became a diplomate of the Academy of Clinical Sleep Disorders Disciplines, and serves as the dental school’s sleep curriculum advisor. A long-time supporter of Pacific Dugoni, she has been serving as part of the Executive Committee of the Alumni Association since 2011. In addition to generously supporting the Kaye Dugoni and Craig and Nancy Yarborough room namings at the new dental school, she and fellow PDF Board Member John Kim '04 and Dr. Jessie Vallee '04 led efforts to raise an impressive \$318,208.04 for their 10-year class reunion gift. Adkins and her husband are happily expecting their first child this December.



PHOTO: JON DRAPER

**Dr. Gary Low '76**  
(nominated by Dr. Daniel Tanita '73)

The Low family in the Central Valley is the epitome of alumni supporting Pacific Dugoni and giving back in service to the community. Following in the footsteps of his father, Dr. William Low '43 and his uncles Drs. Howard Low '38 and Lawrence Low '44, Dr. Gary Low '76 joined his brother Dr. Everett Low '74 and was then followed by his brother Dr. Willard Low '77, in studying the practice of dentistry. Later on, cousins Drs. Lester Low '86 and Lyndon Low '88 also completed their dental degrees at Pacific. Low’s daughter Jennifer graduated from Pacific Dugoni in 2012, and his son Christian graduated in 2014.

As an undergraduate, Low attended the College of Idaho. After he obtained his dental degree from Pacific, he joined the family’s successful dental practice that has offices in Stockton and Manteca, California. Gary is an elder and the president of the church he attends, Calvary Presbyterian Church of Stockton. In his free time, Low enjoys playing golf and being a member of a local United States Tennis Association (USTA) team. He and his wife Susan live in Stockton.

*Dr. Gary Low '76 (far right) with his family. From left: Jonathan, Dr. Jennifer '12, Dr. Christian '14, and wife Susan.*

## PHILANTHROPY

### Kids in the Clinic Golf Classic Raises More Than \$70,000 to Support Oral Health Care for Children in Need

Local celebrities joined with Pacific Dugoni family, friends and supporters to golf for a good cause at The Olympic Club, the famed site of the 2012 U.S. Open and other championship events. The day of golfing and camaraderie on September 8 raised more than \$70,000 to support the Kids in the Clinic Endowment, that helps provide oral health care for underserved children at Pacific Dugoni's Hutto Patterson Pediatric Clinic and Redmond Family Orthodontic Clinic.



The new format of this year's event gave golfers the opportunity to split their 18-hole round between the Lake Course and the Ocean Course, with a lunch in the clubhouse midway through the day. An enthusiastic group of more than 200 golfers played in the successful event, which attracted a significant number of sponsors. Special on-course activities included a Million Dollar Shoot Out, Beat-the-Pro Challenges and visits from special guests, including the 49ers Gold Rush, saxophonist Michael Phillips and the Warriors Girls. The event concluded with an awards ceremony and cocktails. The foursome of Dr. Dan Gustavson, Catherine Larson, Brian Little and Jeff Neel took home the top honors at the event, following a playoff on the 18th hole.

Mark your calendars for next year's golf event on October 26, 2015.

Generous sponsors of this year's event included: invisalign®; NBC Bay Area; San Francisco Chronicle; Mitchell & Mitchell; Bank of San Francisco; Delta Dental; hope & grace; KaVo Kerr Group; Napa Smith Brewery; Patterson Dental; Redmond Family Orthodontic Clinic, Schulman Study Group; Team Superstores; Tired & Company CPAs; Carroll & Company; California Bank of Commerce; Focus Business Bank; Mancuso Oral & Maxillofacial Surgery; Dr. Gerald Bittner Jr.; Tommy's Mexican Restaurant; If Only; Thomas Wirig Doll; Henry Schein®; Haas & Reaney, LLP; Drs. Gerald and Susan Bittner; Dr. Michael Fox; Dr. Eddie Hayashida; Dr. Chris Louie; Dr. Scott Milliken; Rouleau Orthodontics; Dr. Dan Tanita; Dr. Carey Weatherholt; Daryl Weinroth; Dr. Francis Yankee; and Dr. Doug Yarris.

The Kids in the Clinic Golf Classic was started by Dr. Susan Bittner '74A and the Children's Dental Healthcare League to raise money for the Kids in the Clinic Endowment, which has grown to more than \$2 million. Pacific Dugoni Foundation board members, Dr. Doug Yarris '83 and Dr. Michael Fox '82, and former board member Michael Carroll, were co-chairs of this year's fundraiser.

To learn more about the Kids in the Clinic Endowment or to become involved in future fundraising events, visit [www.kidsintheklinik.org](http://www.kidsintheklinik.org).



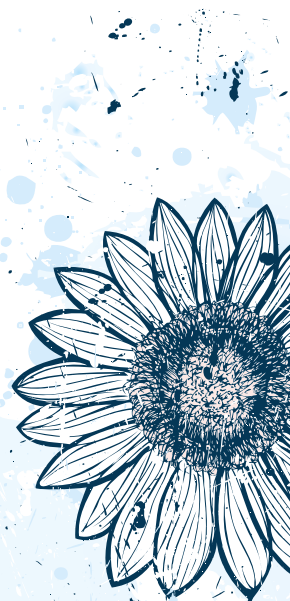
PHOTOS: BRUCE COOK



## Memorial and Honor Gifts

In Memory of:	Given By:	Given To:
Dr. Andrew and Mrs. Kathleen Auyong	Dr. Thomas G. Auyong	Oral Surgery Restricted Fund
Peyman Berarpour	Dr. Scott D. Schapansky	Annual Fund
Robert 'Chip' Block	Geissberger Family Practice	Dr. Louis J. and Norma Grosso Geissberger Faculty Endowment
Arthur Brown	Dr. Robert L. Dorian	Dr. Ernest G. Sloman Library Endowment
Barbara Chacon	Dr. Robert Christoffersen	Dr. Robert Christoffersen Faculty Endowment
Billie Louise Cole	Dr. Robert C. Coupe	Annual Fund
Myron Danyliv	Mariana Danyliv	General Memorial Fund
Mr. & Mrs. M. A. DeSantos	Dr. Manuel F. DeSantos	Annual Fund
Dr. Gene F. Dixon	Dr. Branislava Peric-Sekelj	Annual Fund
Sean Elam	Craig & Nancy Yarborough	General Memorial Fund
Dr. Neal E. Fong	Dr. & Mrs. R. Randall Yee	Dr. Herbert K. Yee Scholarship Endowment
Zahra Nasrin Ghadiri	Sig & Teri Abelson	Annual Fund
	Craig & Nancy Yarborough	General Memorial Fund
	Dr. Steven A. Dugoni	Dr. Arthur & Kaye Dugoni Student Scholarship Endowment
	Drs. Wai Ming Chan & Ruby Yu	Annual Fund
	Dr. David & Mrs. Virginia Nielsen	Annual Fund
	Dr. Anders Nattestad	Annual Fund
	Dr. Cindy Lyon	Annual Fund
Wilma "Willy" Gilberg	Craig & Nancy Yarborough	General Memorial Fund
	Geissberger Family Practice	Dr. Louis J. and Norma Grosso Geissberger Faculty Endowment
Al & Maryann Gilmour	Drs. Hue To & Tuong Nguyen	Annual Fund
Ruth Goehring	Dr. David & Mrs. Virginia Nielsen	Dr. F. Gene and Rosemary Dixon IDS Endowment
Dr. William Goon	Dr. Nancy Brace Greenfield	General Memorial Fund
Eva Graffigna	Craig and Nancy Yarborough	General Memorial Fund
Donald Haet	Dr. Caren F. Hovden	Hovden Family Endowment
Dr. Leon B. Hansen	Geissberger Family Practice	Dr. Louis J. and Norma Grosso Geissberger Faculty Endowment
Mark Haynes	Geissberger Family Practice	Dr. Louis J. and Norma Grosso Geissberger Faculty Endowment
Gregory Hill	Dr. Wilbur J. Eich	Annual Fund
Dr. Scott Jacks	Dr. and Mrs. Thomas R. Bales	Dr. Thomas R. Bales Family Endowment
	Dr. and Mrs. Arthur A. Dugoni	Dr. Arthur & Kaye Dugoni Student Scholarship Endowment
	Craig and Nancy Yarborough	Annual Fund
Dr. Chris R. Keszler	Dr. Daryl B. Payne	Annual Fund
Tari Kudlac	Ronald D. Shrader, DDS	Annual Fund
Abner Kuperstein	Dr. Kenneth F. Hovden	Hovden Family Endowment
Lilia Chow Louie	Craig and Nancy Yarborough	General Memorial Fund
Rosemary Matthews	Geissberger Family Practice	Dr. Louis J. and Norma Grosso Geissberger Faculty Endowment
Lucy Mazza	Dr. Kenneth F. Hovden	Hovden Family Endowment
Dorothea McKinsey	Geissberger Family Practice	Dr. Louis J. and Norma Grosso Geissberger Faculty Endowment
Robert Emmett Murphy	Geissberger Family Practice	Dr. Louis J. and Norma Grosso Geissberger Faculty Endowment
Dr. Leland C. Nelson	Lois Nelson	Annual Fund
Berney Neufeld	Craig & Nancy Yarborough	General Memorial Fund
Margaret Orenyak	Dr. Robert L. Dorian	Dr. Ernest G. Sloman Library Endowment
Anthony Pardi	Geissberger Family Practice	Dr. Louis J. and Norma Grosso Geissberger Faculty Endowment
Juanita Maybelle Pieri	Geissberger Family Practice	Dr. Louis J. and Norma Grosso Geissberger Faculty Endowment
Dr. Norman J. Snyder	Dr. Steven A. Dugoni	Dental Facilities Fund
Dr. Don Strub	Dr. Gary and Mrs. Loraine Gast	Annual Fund
	Drs. Wai Ming Chan & Ruby Yu	Annual Fund
David Schleimer	Anonymous	Kids in the Clinic Endowment
Misty Singh	Craig and Nancy Yarborough	General Memorial Fund
Dr. John Teverbaugh	Dr. Caren F. Hovden	Hovden Family Endowment
Dr. Alan R. Tuchten	Rita and Kenneth Brandt	Dr. Alan R. Tuchten Scholarship Endowment
Joseph 'Mike' Turnacliff	Dr. Robert L. Dorian	Dr. Ernest G. Sloman Library Endowment
Robin Williams	Geissberger Family Practice	Dr. Louis J. and Norma Grosso Geissberger Faculty Endowment
Dr. Shannon Wong	Rachana Jha	Annual Fund
Dr. Willard T. Wylie	Dr. Robert L. Dorian	Dr. Ernest G. Sloman Library Endowment
	Drs. Charles and Marion Hovden	Hovden Family Endowment
Timothy Guy Yaeger, Sr.	Dr. Steven A. Dugoni	Dr. Arthur & Kaye Dugoni Student Scholarship Endowment
	Drs. Charles and Marion Hovden	Hovden Family Endowment
<b>In Honor of:</b>	<b>Given By:</b>	<b>Given To:</b>
Dr. Mark M. Abzug	Casey Luu	Annual Fund
Dr. Kalid Aziz	Angela Laithangbam	Annual Fund
Dr. Mark T. Booth	Grey Kantor	Annual Fund
Dr. Bob L. Boyd	Dr. Thomas R. Pitts	Annual Fund
Amrik & Balwinder Cheema	Dilpreet Cheema	Annual Fund
Dr. Robert Christoffersen	Dr. Russell D. Di Bari	Annual Fund
Dr. Patrick J. Ferrillo, Jr.	Dr. Bruce N. Peltier	Dental Facilities Fund

This list reflects memorial gifts from February 24, 2014 through August 1, 2014.



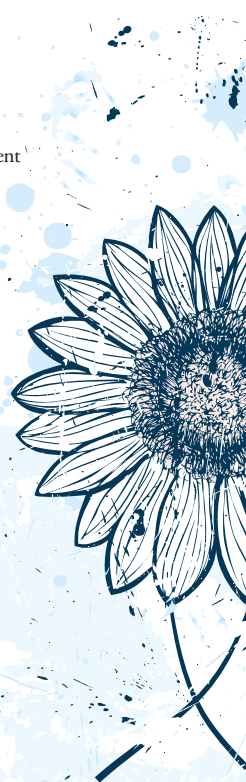
# PHILANTHROPY

In Honor of:	Given By:	Given To:
Bahadur Singh Grewal	Kapil Grewal	Annual Fund
Brad & Kelly Irving	Greggory B. Irving	Annual Fund
Dr. Brian J. Kenyon	Aruna Singh	Annual Fund
Young Seok & Eunkyung Kim	Laura Hayoung Kim	Annual Fund
Dr. Rebecca B. Keller	Sally Field	Annual Fund
Dr. Jennifer Leon-Guerrero	Nick Leon-Guerrero	Annual Fund
Dr. Elliott Low	Christine Do	Annual Fund
Dr. David B. Nielsen	Steven & Lisa Dugoni	Arthur A. and Kaye Dugoni Student Scholarship Endowment
Michelle Nguyen	Albert Truong	Annual Fund
David W. Regehr	Brydan Regehr	Annual Fund
Tom & Ruth Rogers	Kristina Rogers	Annual Fund
Dr. Gary A. Thodas	Kim Tran	Annual Fund
Dr. Craig S. Yarborough	Dr. Akhil S. Reddy	Annual Fund
Dr. Matthew S. Yarborough	Sig & Teri Abelson	Annual Fund

In Memoriam		
Dr. E. Daniel McArthur '44A	Dr. John W. Walsh, Jr. '68	
Dr. Philip E. Corin '44B	Dr. Gary D. Lemen '70	
Dr. Richard G. Ehikian '44B	Dr. Thomas C. Boggess '71	
Dr. Wendell W. Gibbs '44B	Dr. Scott T. Jacks '74B	
Dr. Susan L. Lindsay '44B	Dr. David J. Elkins '78	
Dr. Leonard W. Carrick '46	Dr. Ben L. Derwiler '79	
Dr. Robert D. Kassels '48	Dr. Daniel O'Neill '81	
Dr. Richard C. Lee '49	Dr. William J. Palank '82	
Dr. Willard T. Wylie '52	Dr. Michael W. Thompson '85	
Dr. De Van Robins '56	Dr. Vincent H. Hosaka '86	
Dr. Leon B. Hansen '57	Dr. Michael J. Gerber '88	
Dr. Robert S. Toenjes '57	Dr. Bruce Jones, Associate Member	
Dr. Jerry M. Quint '58		
Dr. Robert M. Shutt '61		

If you are interested in making a memorial or honor gift, contact the Development Office at

**415.929.6431**



- Professional Liability Insurance
- Practice Opportunities
- Risk Management
- Fiscal Analysis
- Estate Planning

## We're With You Every Step of the Way.

Serving the Dental Community for Two Generations.

For over two generations, Mitchell & Mitchell Insurance Agency has worked exclusively with members of the dental profession, counseling and guiding dentists through all aspects of a dental career. We identify the problems and pitfalls dentists face, and offer solutions and opportunities in many areas.

**Mitchell & Mitchell Insurance Agency, Inc. 250 Bel Marin Keys Blvd. Novato, Ca 94949 Lic. 0620650**



# HONOR ROLL OF DONORS

Dear Pacific Dugoni Supporter,

On behalf of the Pacific Dugoni Foundation, we are pleased to present this Honor Roll of Donors, listing those who have made gifts to the school between July 1, 2013 and June 30, 2014. During these 12 months we raised more than \$9million—an impressive amount that will help keep our people, programs and facilities on the forefront of dental education.

Thank you to every supporter at every donor level for contributing to the success of the Arthur A. Dugoni School of Dentistry. Together, we are making an impact today and well into the future on students, patients, faculty, staff and others who are part of the Pacific Dugoni family.

In great appreciation,

Dr. Edmond Bedrossian '86  
President, Pacific Dugoni Foundation

## Alumni

<b>1935</b> <u>\$1,000 - \$2,499</u> Susan L. Lindsay	<u>Up to \$250</u> Robert L. Dorian	<u>Up to \$250</u> Ronald Brown Leon B. Hansen William H. Henry Philip R. Snow	<u>Up to \$250</u> Jack E. Groat R. Claude Williamson	<u>\$5,000 - \$9,999</u> Joseph W. Bronzini Kenneth Frangadakis Gary L. Weiner
<b>1942</b> <u>\$10,000 - \$24,999</u> Leonard L. F. Ling	<b>1952</b> <u>\$1,000 - \$2,499</u> Anonymous	<b>1958</b> <u>Up to \$250</u> William E. Wilbur	<b>1963</b> <u>Up to \$250</u> Robert P. McBride	<u>\$2,500 - \$4,999</u> Sigmund H. Abelson
<b>1944</b> <u>\$1,000 - \$2,499</u> Frank A. Brucia	<u>Up to \$250</u> John L. Bonham Donald F. Schutte Thurlow T. Weir	<b>1959</b> <u>\$1,000 - \$2,499</u> Howard E. Hoffman William J. Tognotti	<b>1964</b> <u>\$2,500 - \$4,999</u> Michael S. DiTolla, Sr.	<u>\$500 - \$999</u> John R. Nardone
<b>1945</b> <u>Up to \$250</u> Robert C. Coupe	<b>1953</b> <u>\$25,000 - \$49,999</u> John E. O'Donnell	<u>\$500 - \$999</u> Keith R. Judd	<u>\$1,000 - \$2,499</u> Bruce K. Donald Richard P. Doyle	<b>1967</b> <u>\$5,000 - \$9,999</u> Ernest G. Giachetti David B. Nielsen
<b>1946</b> <u>\$1,000 - \$2,499</u> David L. Lee	<b>1954</b> <u>\$500 - \$999</u> Eugene R. Skelley	<u>Up to \$250</u> E. Bruce Springbett	<u>\$250 - \$499</u> Stephen H. Abel	<u>\$1,000 - \$2,499</u> Robert Christoffersen Thomas E. Love
<u>\$500 - \$999</u> Howard M. Buschke	<u>Up to \$250</u> Richard C. Yates	<b>1960</b> <u>\$1,000 - \$2,499</u> Leon C. Nelson	<u>Up to \$250</u> Edward J. Laveroni	<u>\$250 - \$499</u> Kerry D. Hanson
<u>Up to \$250</u> J. Milford Anholm	<b>1955</b> <u>\$1,000 - \$2,499</u> James A. Graham V Philip W. Strauss	<u>\$250 - \$499</u> C. Bayless Conley, Jr.	<b>1965</b> <u>\$100,000 - \$249,999</u> Alvin E. Warkentine	<b>1968</b> <u>\$1,000 - \$2,499</u> David D. Ferro William A. Ralston
<b>1947</b> <u>\$100,000 - \$249,999</u> Chris R. Keszler	<u>\$500 - \$999</u> Richard F. Hoedt, Sr. W. Allwyn Metherell	<u>Up to \$250</u> Ronald E. Cliff Doyle L. Hansen James R. Subject	<u>\$25,000 - \$49,999</u> Colin C. Wong	<u>\$500 - \$999</u> Roger P. Lusch
<b>1948</b> <u>\$25,000 - \$49,999</u> Arthur A. Dugoni	<u>Up to \$250</u> Jerome E. Dobak John R. Russell	<b>1961</b> <u>\$500 - \$999</u> Walter E. Haase	<u>\$2,500 - \$4,999</u> F. Paul Senise Ronald G. Shrader	<u>Up to \$250</u> Gary R. Nelson
<u>\$2,500 - \$4,999</u> Herbert K. Yee	<b>1956</b> <u>\$1,000 - \$2,499</u> George A. Louie	<u>Up to \$250</u> Seth C. Baker Alan C. Bleier	<u>\$1,000 - \$2,499</u> Morel Fidler	<b>1969</b> <u>\$10,000 - \$24,999</u> G. Bruce Valentine
<u>\$1,000 - \$2,499</u> John K. Ishizuka	<u>Up to \$250</u> Jack M. Chamberlain Stephen S. Yuen	<b>1962</b> <u>\$2,500 - \$4,999</u> A. Roy Cleghorn	<u>\$500 - \$999</u> Richard S. Fife Stephen Flanders	<u>\$2,500 - \$4,999</u> Kenneth E. Lange
<u>\$500 - \$999</u> Robert J. Flynn	<b>1957</b> <u>\$10,000 - \$24,999</u> Anonymous	<u>\$1,000 - \$2,499</u> Jack M. Saroyan	<u>\$250 - \$499</u> Daniel F. Gentile	<u>\$250 - \$499</u> Larry M. Doyle Frederick J. McCord
<b>1951</b> <u>\$10,000 - \$24,999</u> Robert S. Reid	<u>\$250 - \$499</u> Robert S. Toenjes	<u>\$250 - \$499</u> Bruce H. Carter	<b>1966</b> <u>\$10,000 - \$24,999</u> W. Ronald Redmond	<b>1970</b> <u>\$10,000 - \$24,999</u> Albern L. Spoolstra
<u>\$1,000 - \$2,499</u> Anonymous				

\$250 - \$499  
Ross M. Stangeland

Up to \$250  
Charles J. Molosky II

**1971**  
\$25,000 - \$49,999  
Braden W. Beck

\$10,000 - \$24,999  
Thomas G. Atwood

\$5,000 - \$9,999  
William C. Sands

\$2,500 - \$4,999  
Richard W. Lawrence

\$1,000 - \$2,499  
W. Peter Hansen, Jr.

\$500 - \$999  
Frank R. Hodges

Up to \$250  
William C. Crafton  
Steven C. Fong  
L. James Martin

**1972**  
\$5,000 - \$9,999  
Gerald L. Bittner

\$2,500 - \$4,999  
Alan H. Gluskin

\$1,000 - \$2,499  
Donald W. Boyle  
Marvin W. Conley  
Milton J. Pagonis  
Michael J. Sayegh

\$500 - \$999  
Kenneth W. Meirovitz  
Gary E. Tucker

\$250 - \$499  
Richard Gabor  
Robert C. Ludlow

Up to \$250  
Scott C. Hallsted  
Irving D. Hoffman  
Dennis R. Jones

**1973**  
\$10,000 - \$24,999  
Daniel S. Tanita

\$5,000 - \$9,999  
Michael F. Hair, Sr.  
William A. van Dyk

\$1,000 - \$2,499  
Ronald L. Champoin  
Thomas A. Gordon

**1974**  
\$25,000 - \$49,999  
Scott T. Jacks

\$10,000 - \$24,999  
Marvin B. Carnow  
Clifford J. Ruddle

\$5,000 - \$9,999  
Thomas R. Bales  
Susan Alcaraz Bittner  
Dale B. Herrero

\$2,500 - \$4,999  
Richard A. Farrell  
Russell O. Gilpatrick

\$1,000 - \$2,499  
Lowell G. Daun  
John W. Feaster  
David K. Jalen  
Monte F. Person  
John W. Schulz  
Alan J. Smith  
Norman C. Spalding  
Paul K. Yee

\$500 - \$999  
Fred J. Fendler  
Randall C. Lum

\$250 - \$499  
C. Stuart Beach  
Tandy J. Centers  
Thomas B. Dusel  
I. Lee Ence  
Michael J. Fields  
Robert P. Olson

Up to \$250  
John J. Muzio III  
E. Michael Stehula  
Warren Wong

**1975**  
\$5,000 - \$9,999  
Gary S. Yonemoto

\$1,000 - \$2,499  
John Fong  
Douglas O. Kong  
Gloria W. Fong  
Daniel S. Poulson  
Dennis D. Shinbori  
Ann Marie Silvestri Ellerhorst

\$500 - \$999  
Edward A. Johnson III  
Kenneth S. Singleton

\$250 - \$499  
Herbert C. Jensen III  
Michael P. Ratto  
Brian R. Sheaff

Up to \$250  
James W. Hodge  
Glenn J. Palumbo  
Gerald J. Pieroni

**1976**  
\$2,500 - \$4,999  
Dean L. Duncan  
Gary K. Low

\$1,000 - \$2,499  
Laurence A. Darrow  
Melvin L. Matsuda  
Howard M. May  
Gary E. Pagonis  
Geronimo F. Romero  
Anthony K. Santos  
Marvin M. Scott  
Walter G. Weber

\$500 - \$999  
Richard J. Curotto  
David H. Feldman  
Leland H. Lee  
Frederick T. Wood

\$250 - \$499  
Terrie T. St. Germain

Up to \$250  
Gregory S. Gorman  
Todd H. Nalley

**1977**  
\$100,000 - \$249,999  
Gary A. Thodas  
M. Gabrielle Thodas

\$25,000 - \$49,999  
Gregory V. Wadden

\$2,500 - \$4,999  
Kelvin C. Choi

\$1,000 - \$2,499  
David M. Cashman  
Thomas C. Ellerhorst  
David Feder  
George D. Karsant, Jr.  
Ronald W. Nichols  
Natalia Nikolaeff-Svensson  
James J. Passamano  
Robert J. Torghele

\$500 - \$999  
Robert Caraco  
Mary M. Turoff

Up to \$250  
Douglas Y. Fong  
Gordon F. Freeman  
Corey L. Jang  
Gail Chan Jang  
Richard C. Kennedy, Jr.  
Darryl L. Lee  
Leonard J. Levine  
Thomas A. McConnell  
John E. Scoggins  
Gerald T. Shinkawa

**1978**  
\$1,000 - \$2,499  
Steven L. Bo  
Daniel J. Murray  
Alexander G. Namikas

\$500 - \$999  
Randall C. Partin

\$250 - \$499  
Thomas P. Farris  
Susan H. Fisher

Up to \$250  
Frank L. Altick  
Patrick T. Cotter  
H. Kathleen Freed  
Richard L. Gapper  
Kellie A. Magee  
Christopher J. Spencer

**1979**  
\$25,000 - \$49,999  
Michael K. Campbell  
Stephen C. Rose

\$5,000 - \$9,999  
David H. Bill  
Howard L. Hunt  
Bonnie J. Morehead  
David S. Suga

\$2,500 - \$4,999  
Jeanette M. Okazaki

\$1,000 - \$2,499  
Richard A. Cordano  
Ronald L. Mino  
Jeffrey S. Rubin  
Betty S. Vodzak

\$500 - \$999  
William B. Blocher  
Thomas A. Dawson  
Jon E. Hollister  
Emilia Seiferling  
Joel L. Strom

\$250 - \$499  
Bradley D. Shepard  
Randall T. Taylor

Up to \$250  
Wai Ming Chan  
Joseph H. Greiner  
Marc N. Reis  
Russell G. Woodson

**1980**  
\$10,000 - \$24,999  
Enrico E. DiVito  
Joseph V. Errante  
Scott A. Walker

\$5,000 - \$9,999  
Lester Machado  
James H. Van Sicklen, Jr.  
Craig S. Yarborough

\$2,500 - \$4,999  
Brian A. Hennessy  
Michael G. Long  
Mark D. Winger

\$1,000 - \$2,499  
David Goldberg  
Scott K. Takiguchi

\$500 - \$999  
Stephen J. O'Brien

\$250 - \$499  
Franklin H. Meyer

Up to \$250  
Daniel F. Burk  
Martin A. Chee  
Lawrence H. Joe  
David Kloss  
Richard C. S. Lee

**1981**  
\$10,000 - \$24,999  
Steven A. Dugoni

\$1,000 - \$2,499  
Martin P. Abelar  
Richard D. Hoefke  
Joanne E. V. Lagos  
William P. Lundergan  
Douglas H. Miller  
Craig Nagareda  
Stephen W. Spelman  
Bruce G. Toy

\$500 - \$999  
Carolyn D. Hitchcock  
Mont M. Ringer  
Dennis D. Struve  
David K. White  
Duane L. Wirth

\$250 - \$499  
Daniel M. Castagna  
A. William Choules  
Chad W. Dodds  
Jeffrey K. Haug  
Jade A. Miller

Up to \$250  
Louis J. Casillas  
Lynn M. Edwards  
Edward T. Graham  
Daniel V. Lewis  
Michael D. Nelson  
William D. Rawlings  
Gregory C. Skinner  
James L. Woolf

**1982**  
\$5,000 - \$9,999  
Barry G. Kami  
Bertrand D. Rouleau  
Kevin R. Tanner

\$1,000 - \$2,499  
Anne E. Becker  
Antonio Cucalon III  
Kenneth E. Follmar II  
Gwen V. Halterman  
Alan D. Marcus  
Ben B. Maze  
Richard F. Moorhouse, Jr.  
Susan L. Park  
Gerald M. Schneider  
James D. Stephens  
Allen M. Wong

\$500 - \$999  
Michael L. Fox  
James E. Milani

\$250 - \$499  
Edward J. Casper

Up to \$250  
Timothy G. Bricca  
Nancy Ruth Kaher  
William V. Stenberg, Jr.

**1983**  
\$100,000 - \$249,999  
William M. Dorfman

\$2,500 - \$4,999  
Christopher L. Louie

\$1,000 - \$2,499  
Janet E. Andrews  
Victoria T. Griego  
Kevin M. Kurio  
Victor L. Lim  
Timothy M. Mettler  
Edgar P. Poremba  
Kelly Shaw  
Edwin J. Sims  
Carey B. Weatherholt

\$500 - \$999  
John W. Buzza  
Michael J. Rebottaro  
Michael J. Spitzer

\$250 - \$499  
Cindy G. Eliahu  
Theresa M. Frank  
Deborah A. Shiba  
Andrew P. Soderstrom

Up to \$250  
Michael J. Herrera  
Luis H. Morales  
Steven T. Ngoi  
Gregory M. Nitz  
Scott A. Tangeman

**1984**  
\$25,000 - \$49,999  
Kimberly Corrigan Dankworth  
Stephen R. Dankworth  
Elisa M. Lobue-Campbell

\$2,500 - \$4,999  
Elizabeth A. Roullier-Bunz

\$1,000 - \$2,499  
James P. Boyd  
Thad L. Champlin  
Stafford J. Duhn  
Margaret R. Errante  
Erich K. Habelt  
Peter E. Hagen  
Jill B. Jardine  
Constantine J. Karsant  
Garrett R. Kawata  
Michael W. McCarthy

\$500 - \$999  
Ronald R. Freeman  
Jetson S. Lee  
Robert E. Mays, Jr.



Up to \$250  
Mark R. Chase

**1985**  
\$25,000 - \$49,999  
Kenneth A. Shimizu

\$10,000 - \$24,999  
Gerald L. Bittner, Jr.

\$1,000 - \$2,499  
William D. Gilbert  
Dennis W. Hobby  
Steven H. Yoshioka

\$500 - \$999  
Susan E. Caliri  
Heidi K. Hausauer  
James M. Kahal  
Ross C. Lai  
Dolores E. Murphy  
Timothy J. O'Connor

Up to \$250  
Jeffrey K. H. Ching  
Carolyn Wai Han Leong

**1986**  
\$50,000 - \$99,999  
Edmond Bedrossian

\$10,000 - \$24,999  
Carl H. Trubschenck

\$5,000 - \$9,999  
Adrian J. Vande Merwe

\$2,500 - \$4,999  
Debra A. Woo

\$1,000 - \$2,499  
Darwin Chan  
William T. Conklin  
Larry B. Crawford  
John D. Lokrantz  
Brian W. Payne  
Ariane R. Terlet  
Judee A. Tippet-Whyte

\$500 - \$999  
Caroline A. Bobbett  
Eduardo T. Castillo  
Clifford O. Marks

\$250 - \$499  
Nancy L. Gum  
P. Bradford Smith  
Beverly A. Witham

Up to \$250  
Christopher J. Carney  
Ralph J. Isola  
B. Jeffrey Kay

**1987**  
\$1,000 - \$2,499  
Rudolph R. Ciccarelli  
Leslie Jue  
Thaddeus S. Krzywicki

\$500 - \$999  
Kurt R. Whitlow

\$250 - \$499  
Rick A. Chelemedos  
Virginia Humphrey Thomas  
Mark J. Hyer  
Linden K. Ishii  
Kenneth C. Nash

Up to \$250  
James C. Calcagno  
Stephen C. Call  
Fredrick R. Cho  
Kristian E. Hyer  
Joan M. Jupina

Nestor Karas  
M. Lynn Merz  
Jeffrey C. Murphy  
Gary W. Reichhold  
Paul J. Tiernan

**1988**  
\$50,000 - \$99,999  
David S. Campbell

\$5,000 - \$9,999  
Marina Pampalone Cuenin  
Robert M. Cuenin  
John Y. Tang

\$2,500 - \$4,999  
Leslie M. Horning Carpenter  
Herbert B. Gibbs  
Jeffery E. Teutsch

\$1,000 - \$2,499  
Jeff J. Brucia  
Daniel J. Charlton  
Kristi L. Doberenz Swimmer  
William C. Eich  
Gregory T. Grubba  
David J. Harnick  
Peter D. Kiryakos  
Anton F. Misleh  
David E. Rauterkus  
Lori L. Rauterkus  
Mark F. Swimmer  
Erich M. Werner  
Wilson Wong

\$500 - \$999  
Loretta C. Chee Phillips  
Pamela B. Morris  
Lance M. Matsune  
Lance D. Ogata

\$250 - \$499  
Jeffrey M. Carter  
Mark R. Koenen  
Roland E. Womack

Up to \$250  
Michael C. Horasanian  
Nelson A. Johansen  
Robin M. Nishimura

**1989**  
\$2,500 - \$4,999  
Susan J. Purcell

\$1,000 - \$2,499  
Joseph K. Drinkwater  
Dell A. Goodrick  
Todd E. Shatkin

\$500 - \$999  
John H. Barakat  
Jennifer Hwai-Yin Chang  
Genevieve R. Dee  
Navid Nadershahi Knight  
Michael J. Madrigal  
Victor R. Mancuso, Jr.  
Nancy Nehawandian-Fathi  
Melissa E. Rinck  
Kelvin A. Tse  
Cynthia L. Weideman  
Alvin T. Yoshida

\$250 - \$499  
Michael L. Abelson  
Robert H. Barakat  
David S. Frey  
Ka-Sing Fung

Up to \$250  
Michael A. Njo  
David L. Sparks

**1990**  
\$2,500 - \$4,999  
Randall W. Murray

\$1,000 - \$2,499  
Azadeh Paydar

\$500 - \$999  
Jay E. Bauman  
Jeffrey J. Bueno  
Jeffrey L. Davidson  
Manuel F. DeSantos  
Kurt J. Greenway

\$250 - \$499  
Robert L. Grove, Jr.

Up to \$250  
Craig W. Conrow  
Colin T. Yoshida

**1991**  
\$10,000 - \$24,999  
Scott Y. J. Kim

\$5,000 - \$9,999  
F. Niloufar Nadershahi

\$2,500 - \$4,999  
Marc J. Geissberger  
Gabrielle W. Duggan Rasi

\$1,000 - \$2,499  
Paul S. Phillips  
Ronald P. Pisciotta  
Suzanne Saidi  
Theodore A. Tanabe

\$500 - \$999  
Kelvin S. Auyoung  
Terrence K. Kinaga  
Khiet M. Tran

\$250 - \$499  
Ben Byung Woo Jin

Up to \$250  
Thomas J. Arostegui  
Henry S. Lee  
Angelique D. Skoulas  
Tiphonie T. Tran  
Vladislav Viksman

**1992**  
\$5,000 - \$9,999  
Shailesh K. Patel

\$2,500 - \$4,999  
Tuong H. Nguyen  
Javid J. Salehieh  
Hue Nguyen To

\$1,000 - \$2,499  
Von H. Goodin  
Toshiko I. Cruz Hart

\$500 - \$999  
Jesus R. Barreto  
Jeffrey Ray Mattila

\$250 - \$499  
David W. Gibson  
Susan E. Soderstrom  
Christina L. Tourtlotte

Up to \$250  
Cordelia Achuck Saito  
Anthony G. Costella  
Danny S. Lee  
Susana Martinez  
Lien N. Pham  
Lenny Tolstunov  
Adrian M. Vogt

**1993**  
\$10,000 - \$24,999  
Yuly Vilderman

\$5,000 - \$9,999  
Mehran Fotovatjah  
Jeffrey L. Geissberger

\$1,000 - \$2,499  
John D. DeLorme, Jr.  
Timothy W. Kearns  
Laura C. H. Lam  
Ricardo M. Perez  
Jeanette Truong Trosset

\$500 - \$999  
John J. Jaber

Up to \$250  
Anthony T. Ku

**1994**  
\$5,000 - \$9,999  
Ali Alijanian  
Nader A. Nadershahi

\$2,500 - \$4,999  
Kevin J. Komatsu  
Irine P. Sims-Komatsu  
Sepideh Vafi

\$1,000 - \$2,499  
Lindy B. Bixby  
Angelle M. Casagrande  
Masoud Fanaian  
Amanda Nguyen

\$500 - \$999  
Kerry N. Davis  
Connie I. Kais  
Rodney J. Kellogg  
Trang M. T. Nguyen  
John S. Noe  
An T. Tran  
Trang Nguyen Vu

\$250 - \$499  
Edmond K.S. Fung  
Jennifer L. Martin  
Sima Salimi

Up to \$250  
Rose M. Goldstein

**1995**  
\$10,000 - \$24,999  
Nava Fathi

\$5,000 - \$9,999  
Michael O. Lasky

\$2,500 - \$4,999  
Hessam Ahani  
Bella A. Doshi  
Christina M. Fantino  
My Hang Nguyen  
Frances H. Yankie

\$1,000 - \$2,499  
Arsalan Ahani  
Erica S. Conway-Wahle  
Brian J. Emrich  
Ara A. Gulesserian  
Irina Mirkina  
David E. Morris  
Gary D. Sabbadini  
Mary H. Smith  
Shawn M. Widick

\$500 - \$999  
Mark E. Ajlouni  
Kevin T. H. Nguyen  
Ned L. Nix

\$250 - \$499  
Susana M.S. Chou  
Alan G. Chui  
Raymond N. Kim  
Lynn E. Watanabe

Up to \$250  
F. Toby Casci  
Michelle M.C. Fang  
Albert H. Fu  
Cynthia Hom  
Val Nickinson  
Victoria K. Sullivan

**1996**  
\$5,000 - \$9,999  
David I. Alpan

\$2,500 - \$4,999  
Mark K. Tadrissi  
Quat P.T. Tran

\$1,000 - \$2,499  
Stephanie A. Berg  
Steve N. Duong  
Jill A. Martenson  
Simon P. Morris  
Tuan H. Nguyen  
Laurent T. L. Vien

\$500 - \$999  
Thomas L. Yee

\$250 - \$499  
Steven T. Kobayashi  
C. Stefan Moiceanu

Up to \$250  
Matthew M. Hansen  
John B. McCleve

**1997**  
\$2,500 - \$4,999  
Robert E. Dyer  
Clarke V. Filippi  
Nicole E. Nalchajian

\$1,000 - \$2,499  
Nicolo A. Addario  
Sun H. Costigan  
Elizabeth Driver Harmon  
Justin S. Hughes  
Leslie T. Matsumura  
James R. Mattingly V

\$500 - \$999  
John P. Bunnell  
Nahid Fazeli

\$250 - \$499  
Vania M. Ng  
Kenneth B. Prince

Up to \$250  
Bart F. Robison  
Jeffrey S. Sonson  
Richard H. Tabor, Jr.

**1998**  
\$5,000 - \$9,999  
Jill Cohen Lasky

\$2,500 - \$4,999  
Wesley E. Wong

\$1,000 - \$2,499  
Lisa E. Itaya  
James B. Nguyen  
Jon M. Nishikubo  
Sachin K. Singhal  
John C. Slattery

\$500 - \$999  
Fawaz A. Habib  
Alison K. Satterberg Jackson  
Rebecca Bartoli Keller  
James H. Kinsel  
David L. Mahon  
Branislava Peric-Sekelj

\$250 - \$499  
Vinh D. Phan

**1999**

\$10,000 - \$24,999  
Gregory A. Vaughn

\$5,000 - \$9,999

Christine L. Kirchner  
Jason J. West

\$1,000 - \$2,499

Von Laurallie Chan  
Reed T. Hall  
Mark M. Nishimura  
Tiffany L. Nishimura  
Donald C. Schmitt

\$500 - \$999

Diem-Trang N. Dao  
Jeffery L. Little  
Denise Y. Mar  
Wyatt D. Simons

Up to \$250

Linna Golodriga  
Michael T. Tiller

**2000**

\$5,000 - \$9,999  
Ray O. Caoili

\$1,000 - \$2,499

Linda N. Chen  
David A. Chenin  
Luong B. Dang  
Darren M. Haltom  
Douglas A. Moore  
ChauLong T. Nguyen  
Lauret Schreier  
Amy L. Scriven-LaPointe

\$500 - \$999

Jeffrey S. Almond  
Natasha A. Lee  
Rami S. Saah  
Dimitri Salin  
Kenneth C. K. Wong

\$250 - \$499

Jason R. Calvert

Up to \$250

Christine M. Haworth  
D. Brian Hull  
Jennifer McCarthy  
Mitchell G. Rudd  
Mark A. Stewart  
Nina-Solveig Svino  
Sang Q. Tran

**2001**

\$2,500 - \$4,999  
Paul A. Kennedy III  
Sean A. Roth

\$1,000 - \$2,499

David M. Burke  
Naomi Marie Carolino-Au  
Michael L. French  
Parag R. Kachalia  
Rahul G. Kode  
Jason L. Larkin  
Brady J. Neugebauer  
Lorna L. Okada  
Chung-Ling Shaaw  
Sharareh Tajbakhs  
Minh C. Thai

\$500 - \$999

Gregory G. Ganji  
CMDR Thomas B. Jordan  
Michelle D. Stafford  
Suzie H. Yang

\$250 - \$499

Michael K. Greeding  
Rae A. Whitten

Up to \$250

Hesham Ather  
Karen M. Beck  
Justin T. Chapman  
Voki I. Felahy  
Tracy S. Iverson  
Kevin T. Pham

**2002**\$2,500 - \$4,999

Sepand Hokmabadi  
Natalie A. Vander Kam

\$1,000 - \$2,499

David W. Butler  
Krithika S. Chellappa  
Sean M. Feely  
Andrew S. Kouvaris  
Julia Marie McGary  
Sydney J. Moore  
Nava Gabbay O'Sullivan

\$500 - \$999

Charles D. Brodsky  
Joseph D. Fridgen  
Elonia Lasku  
Daniel S. Nam  
Ruth M. Shifman  
Michelle L. Feliciano-Turner  
Linh N. Van

\$250 - \$499

Cory J. Costanzo

Up to \$250

Daniel M. Capponi  
Steven Y. Dodobara  
Thomas S. Ellerhorst  
Jeffrey M. Erickson  
Nancy K. Hsieh  
L. Todd Iverson  
Janmohamed Jaffer  
Joanne M. Jensen  
Shellese A. King-Bassette  
Neetu K. Patel  
Allen W. Summerrlin  
Leah M. Walker  
Candice L. Yee

**2003**\$2,500 - \$4,999

Eric D. Barnes  
Ellery A. Salehieh  
Ann L. Tornabene

\$1,000 - \$2,499

Kathleen M. Bales  
Jiangkai Chen  
Charity L. Duncan  
Nooshan Mirhadi  
Ian J. Paisley  
Shwetha Rodrigues  
Steven L. Ryan

\$500 - \$999

Clark A. Dana  
Marylind D. Stephenson

\$250 - \$499

Leif B. Cobain  
Jamie M. Ferguson

Up to \$250

Jacob M. Brown  
Andrew C. Chen  
Linus P. Chong  
Donald K. Folgner  
John S. Hamblin  
Kathryn Warren Hart  
Winnie W. Y. Lam  
Nickie K. Le  
Amy K. Lee

**2004**

\$10,000 - \$24,999  
Misty A. Cervantes-Kim  
John Y. J. Kim

\$1,000 - \$2,499

Aimin Liu  
Jamie J. Sahouria  
Stefanie Ann Shore  
Xuemei Zhao

\$500 - \$999

Artemiz Seif Adkins  
David J. Crippen  
Gina Delgado Crippen  
Sarosh K. Selim Habib  
Laura O. Nichols  
Sergio Vicuna  
Courtney H. Yoshikawa

\$250 - \$499

Julianne Digiorno-Wadding  
Shaina M. R. DiMariano  
Courtney K. Fitzpatrick  
Gary L. Johnson, Jr.  
David R. McDonough  
Sarika Sood  
Jessie Vallee Stachowiak

Up to \$250

Andrew D. Ducote  
Andrea Pearson Fonner  
Kevin C. Growney  
Samuel J. Mattson  
Steven E. McComb  
David G. McMillan  
Kiran Sandhu  
Eric K. Schmidt  
Andrew W. H. Yap

**2005**\$1,000 - \$2,499

Phillip T. Fletcher  
Seth L. Reder

\$500 - \$999

Babak Khayatan  
Kostantinos N. Pries

\$250 - \$499

Minko Bach  
Luke W. Denton  
Ryan B. Higgins  
Hee Soo Oh

Up to \$250

Tyler L. Clark  
Douglas R. Heath  
Angelina D. Ring

**2006**\$5,000 - \$9,999

Jared M. Theurer

\$1,000 - \$2,499

Zachary T. Dodson  
Jennifer A. Fong  
Alexander E. Pagonis  
Frank Tran

\$500 - \$999

Marianae D. Apetroaei  
Damon M. Barbieri  
Aja H. Hall-Kadri  
Priyanka Moonka  
John J. Petrini, Jr.

\$250 - \$499

Nathan R. Baxter  
Jesse L. Cole  
Stephen T. G. Wat

Up to \$250

Katherine A. Bracy  
Daniel R. Copp  
Patricia D. Gordon  
David A. Herald  
Douglas M. Herrera  
Alexandr S. Klimushkin  
Daniel E. Lapidus  
Jessica Rivas-Plata  
Sean M. Rockwell

**2007**\$2,500 - \$4,999

Tyler E. Nelson

\$1,000 - \$2,499

Binh B. Dao  
Anthony Ferrera  
Jane Vu Ferrera  
Peter J. Kim  
Alexis D. Lyons-Dao  
David H. Mishler

\$500 - \$999

Ryan S. Bybee  
Brian M. Carey  
Melissa M. Chavez-Grinde  
Jonathan B. Fisher  
Brian J. Goodman  
Ryan Kir  
Kimberly A. Mahood

\$250 - \$499

Marshall W. Hanson  
Christopher M. Sing  
Xudong Yang

Up to \$250

Robin D. Bethell  
Thomas L. Blaisdell  
Brendan L. Duede  
Shika Gupta  
Silvia S. Huang-Yue  
Alison C. Louie  
Angela D. Malhotra  
David D. Moore, Jr.  
Ryan H. Savage  
Andrew W. Spath  
Lina M. Velasquez  
Kristina Reak Zoulas

**2008**\$10,000 - \$24,999

Margaret I. Barsotti  
Saam Zarrabi

\$5,000 - \$9,999

Jordan C. West

\$1,000 - \$2,499

Brian W. Dugoni  
Michael S. Rose

\$500 - \$999

Tawfiq M. Alkilani  
Colin K. Au  
Chrystle C. Cu  
Roberto E. DiVito  
Mark R. Ence  
John Y. Kuan  
Nathan R. Porter  
Kimberly A. Wong

\$250 - \$499

Cristina A. Chavez  
Jay T. Golinveaux  
Christopher T. Hatae  
Jason M. Matsushino

Up to \$250

Lindsay L. Don  
Ka Yan Mary Fong  
Sherif Ahmed Gabr  
Mark L. Greenmun  
Sigita Jankunas  
David Yul Kim  
Blake K. Kitamura  
Brooke S. Kondo  
Robert M. Sayegh  
Takashi Shighihara  
Brian M. Withers  
David W. K. Yue

**2009**\$1,000 - \$2,499

Lesley A. Sacramento

\$500 - \$999

Megan Shingler Filipovic  
Ellen Kozarek Follmar  
Troy S. Follmar  
Aneil P. Kamboj  
My Phuong Pham  
Jared W. Pool

\$250 - \$499

Olga P. Dudinskaya  
Matthew R. Mynsberge  
Robert J. Passamano  
Eric K. Wood

Up to \$250

Scott T. Frey  
Hamid Reza Hamid  
George D. Kohout  
Christopher J. Oviedo  
Robert J. Quaschnick  
Adam L. Smith  
Brett S. Williams  
Beth Kikue Yamashiro  
Peter M. Zakhary

**2010**\$500 - \$999

Kristy Chu

\$250 - \$499

Garrett E. Chappell  
Helen P. Mockler  
Seth V. Senestraro  
Nicole A. Shinburi  
Amirali Tahbaz

Up to \$250

Jessica Wilson Alt  
Stephen C. Arnason  
Joanne de la Cruz Curameng  
Chad B. Curtis  
Kenneth R. Ence  
Carl J. Fleischmann  
Andrew T. Jang  
Ashley Goerlich Kearney  
Anthony B. Leite  
Rochelle Acoba Manangkil  
Donald J. Robertson  
Ruben C. Sandu  
Martin L. Schellinck  
Bradley P. Western

**2011**\$2,500 - \$4,999

Anonymous

\$1,000 - \$2,499

Angie A. Pagonis

\$500 - \$999

B. Aaron Rouleau  
Yasamin Sariaslani  
Scott D. Schapansky



**\$250 - \$499**

Daniel A. Hammer  
Patrick W. T. Lok  
John F. Miller

**Up to \$250**

Jake H. Banks  
Carsen J. Bentley  
Alissa D. Bordow  
Lauren C. Chapman  
Sookyong Choi  
Sharon C. De Castro  
Matthew E. Durschlag  
Felicia Y. Frizzell  
Erin A. Kane  
Hilari K. Kawakami-Wong  
Lance D. Keyes  
Catherine Coppini Kubera  
Lucille F. L. Lam  
Vu H. Le  
Rachelle Joy Magtanong-Madrid  
Cal F. Martin  
Michael A. Piccione  
Radley B. Robins  
Jacob H. Rogers  
Angeline B. Tamayo  
Vikram Raj Tiku

**2012****\$2,500 - \$4,999**

Jed Ryan R. Antolin  
Jennifer L. Silvers

**\$500 - \$999**

Brandon J. Schiffner

**\$250 - \$499**

Gregory A. Gardner  
Emanuel J. Staes

**Up to \$250**

Annalee Asbury  
Amy S. Au  
David B. Bo  
Chad R. Brown  
Erin M. Cherry  
Katie E. Dinapoli  
Civon L. Gewelber  
Blake A. Gutierrez  
Anne K. Hoang  
Diviya Khiria  
Katherine K. Kieu  
Jason J. Lee  
Josh X. Liu  
Anna K. Nikhinson  
Lauren T. Odonno  
Jeffrey L. Rector  
Kevin J. Robertson  
Nida Shakil  
Kristina Svensson  
Ashley M. Takiguchi  
Jennifer C. Talbott  
Easte M. Warnick

**2013****\$1,000 - \$2,499**

Jessica F. Kravit

**Up to \$250**

Waleed Ahmad  
Juliana Clove  
Austin J. Davies  
Harold C. Henderson  
Jamie G. Leach  
Jamie J. Lee  
Sara K. Linstadt  
Justin H. K. Louie  
Jacqueline D. T. Nguyen  
Monika Radke  
Gurjot K. Sandhu  
Denton H. Sato  
Clint K. Taura  
Katherine A. Wong  
Travis D. Wu

**2014****Up to \$250**

Keon J. Ahghar  
Hamzah T. Alkordy  
Sahil M. Arora  
Marina M. F. Awad  
Brian J. M. Baliwas  
Rachel L. Barnhart  
Vahe D. Barsoumian  
Shelja Bhatia  
Arianne Galino Buniag  
Christopher J. Carillo  
Poppy M. Carlig  
Joohyun Cha  
Ashley L. Chan  
Keng-Hao Chang  
Deborah H. E. Chau  
Dilpreet Cheema  
Connie F. Chen  
Min Chiu  
Jordan S. Christensen  
Medha Patel Desai  
Christine Do  
Christine M. T. Do  
Brandon M. Dole  
Aaron M. Duffy  
Bartolo J. Espana-Austin  
Kristen M. Forbes  
Jordan T. Freeark  
Christine Fu  
Darren M. J. Goring  
Kapil Grewal  
Ashwin Gulati  
Catherine R. Harkin  
Matthew W. Hatzke  
Gassan T. Hawari  
Benjamin B. Hellickson  
Cristina M. Hernandez  
Nathan L. Horwitz  
Greggory B. Irving  
Jacob D. Jennings  
Rachana S. Jha  
Sunny Sidhu Joseph  
Kamile Jureviciute  
Harsh J. Kalyani  
Murtaja A. Kamal Aldeen  
Grey F. Kantor  
Backhabwha Kim  
Hayoung Kim  
Jonathan J. Kim  
Yoonmi M. Kim  
Zhanna Konovalenko  
Kevin M. Kryder  
Rashmi Kurian  
Sean K. Kutlay  
Gae Won Kwon  
Angela Laithangbam  
Summer H. Lane  
Quynh-Mi P. Le  
Kunsun Lee  
Yoon H. Lee  
Nicholas E. Leon-Guerrero  
Doo Y. Lim  
Christian J. Low  
Levi D. Lowry  
Casey A. Luu  
Andrew L. Mahler  
Jesse W. Manton  
Jaclyn Corcoran Martinez  
Yajaira Martinez  
Sukhmani Marwaha  
Grant K. Matsuura  
Daniel T. McFarland  
Jesse A. Mitchem  
Hwi Moon  
Tejas R. Mulye  
Sarah K. Murray  
Minh-Khang E. Ngo  
Lam N. Nguyen  
Yvonne H. Y. Nguyen  
Omid Niavarani  
Seokjoon Pang  
Min S. Park  
Jigneshkumar I. Parmar

Rushang S. Patel

Camille M. Pompeo  
Robert W. Quan  
Brydan D. Regehr  
Brenda S. Reyes  
Kristina Rogers  
Shiva Salehi  
Alana V. Saltzberg  
Aanchal Sekhon  
Erin Meidinger Shah  
Karimeh H. Shehadeh  
Marlana V. J. Shile  
Aruna Singh  
Maria Heidi O. Sipin  
Kailey A. Smith  
Laura C. Stewart  
Melissa A. Styles  
Michael Suh  
John P. Szerszen  
Shahin Taghikhan  
Aaron M. Takigawa  
Ishaan Talwar  
Mimi T. Tran  
Albert V. Q. Truong  
Linda Tsang  
Nastassia N. Ulasik  
Charles N. Van Sicklen  
Shana F. Vohra  
Aleksandar Vukotic  
Derek M. Wallin  
Jacob D. Weissich  
David L. Wirth  
Cory M. Wood  
Zachary T. Worsley  
Lisa G. Wu  
Tiffany C. Wu  
Dong Yan  
Natalie Yang  
Matthew S. Yarborough  
Amy F. Yonemitsu  
Misha Zahedi  
Chelsea E. Zamudio  
Jufen Zhou

**Donors by Class Year**

YEAR	CLASS COUNT	DONOR COUNT	PERCENT PARTICIPATION	TOTAL GIVING
1935	1	1	100%	\$1,000.00
1942	1	1	100%	\$24,500.00
1944	14	1	7%	\$1,000.00
1945	3	1	33%	\$100.00
1946	9	3	33%	\$1,700.00
1947	3	1	33%	\$159,545.68
1948	14	4	29%	\$36,774.96
1951	11	3	27%	\$10,819.75
1952	14	4	29%	\$825.00
1953	16	1	6%	\$25,100.00
1954	15	2	13%	\$550.00
1955	22	6	27%	\$3,450.00
1956	17	3	18%	\$1,627.00
1957	24	6	25%	\$11,351.00
1958	20	1	5%	\$100.00
1959	29	4	14%	\$2,600.00
1960	25	5	20%	\$2,751.00
1961	27	3	11%	\$850.00
1962	34	5	15%	\$5,960.00
1963	33	1	3%	\$200.00
1964	39	5	13%	\$6,000.00
1965	38	8	21%	\$192,251.80
1966	26	6	23%	\$36,722.19
1967	39	5	13%	\$16,749.00
1968	49	4	8%	\$2,850.00
1969	44	4	9%	\$14,037.00
1970	51	3	6%	\$10,980.00
1971	65	9	14%	\$48,688.10
1972	79	13	16%	\$12,983.19
1973	87	5	6%	\$28,649.93
1974	169	27	16%	\$87,264.97
1975	103	15	15%	\$14,905.00
1976	111	17	15%	\$16,539.27
1977	126	24	19%	\$138,050.00
1978	110	12	11%	\$4,702.00
1979	122	22	18%	\$70,040.10
1980	119	18	15%	\$69,964.24
1981	127	27	21%	\$26,409.98
1982	122	20	16%	\$27,164.71
1983	128	23	18%	\$214,355.89
1984	120	18	15%	\$54,580.01
1985	128	13	10%	\$43,951.00
1986	131	20	15%	\$77,344.90
1987	119	19	16%	\$5,976.00
1988	136	30	22%	\$111,926.62
1989	125	21	17%	\$13,825.00
1990	137	10	7%	\$7,035.34
1991	121	17	14%	\$27,071.16
1992	120	18	15%	\$16,355.60
1993	127	10	8%	\$31,017.74
1994	143	20	14%	\$22,692.46
1995	135	29	21%	\$39,926.64
1996	136	14	10%	\$19,883.32
1997	136	16	12%	\$15,164.00
1998	137	14	10%	\$18,103.33
1999	152	14	9%	\$30,701.00
2000	145	22	15%	\$18,340.00
2001	141	25	18%	\$25,268.67
2002	147	30	20%	\$20,877.90
2003	144	23	16%	\$16,763.81
2004	146	29	20%	\$28,114.41
2005	151	11	7%	\$5,904.00
2006	155	22	14%	\$16,674.85
2007	154	29	19%	\$14,257.50
2008	165	29	18%	\$26,862.50
2009	146	20	14%	\$6,721.00
2010	155	20	13%	\$3,220.10
2011	158	29	18%	\$9,075.19
2012	166	27	16%	\$6,986.00
2013	162	16	10%	\$2,540.13
2014	152	124	82%	\$3,281.85

## Friends

### \$100,000 - \$249,999

Mr. Gregory J. Wahl

### \$50,000 - \$99,999

Mrs. Virginia Campbell  
Drs. Tony and Virginia Chan  
Patrick J. Ferrillo, Jr., DDS

### \$25,000 - \$49,999

Mr. John Cagnone  
Mr. and Mrs. Gary M. Mitchell  
Mr. and Mrs. Thomas and  
JoAnn Prescott

### \$10,000 - \$24,999

Gary A. Carnow, EdD  
Mrs. Rosemary Dixon  
Dr. and Mrs. A. Joel Gluck  
Henry Horn, DDS  
The A. Thomas Indresano Family  
Drs. Helen Lang and  
Chung-Ming Chang-Chien  
Dr. Bruce W. Manning  
Mr. and Mrs. Richard A. Miller  
Greg Nalchajian, DDS  
Steven and Terri Tiret

### \$5,000 - \$9,999

Dr. and Mrs. Robert Fry  
Dr. Yan Kalika  
Mr. and Mrs. John K. McGill  
Dr. and Mrs. Anders Nattestad  
Dr. and Mrs. Louis Prusa  
Dr. Aneet Randhawa  
Dr. Gurjit Randhawa  
Dr. Paul E. Subar  
Ms. Maylene Wong

### \$2,500 - \$4,999

Mr. and Mrs. Harry R. Abelson  
Mr. Robert J. Beriault  
Dorothy Burk and Ken Harrison  
Dr. Don Demas  
Dr. Gregory Hack  
Dr. N. Karl Haden  
Dr. and Mrs. Harry H. Hatasaka  
Dr. Eddie K. Hayashida  
Mr. Dean Leonard  
Dr. Aaron Molen  
Dr. Richard Molen  
Dr. James O'Leary  
Mrs. Carolyn Pride  
Mr. and Mrs. Michael D. Tiret  
Dr. Jessica B. Ulmer

### \$1,000 - \$2,499

George Adams, DDS  
Dr. Leigh C. Anderson  
Dr. and Mrs. Sheldon Baumrind  
Dr. Roy Bergstrom and  
Dr. Allan Chinen  
Dr. and Mrs. Alton C. Bishop  
Dr. Brian Bons  
Dr. and Mrs. Barry E. Booth  
Dr. Ronald F. Borer  
Dr. and Mrs. Richard Boyd  
Dr. Robert J. Bray  
Dr. Edward V. Brown III  
Dr. Alan W. Budenz  
Mr. Fred de Roode  
Dr. Dean J. DeRanieri  
Mr. and Mrs. James A. Dugoni  
David and Sabrina Eastis  
Dr. Richard A. Fagin  
Ms. Linda P. Frank  
Dr. Richard E. Fredekind and  
Ms. Lin Brown  
Dr. and Mrs. Gregg Frey  
Mrs. Jane K. Gertler

Dr. J. Courtney Gorman  
Dr. Jasmine Gorton  
Dr. Anthony L. Harwell Jr.  
Mrs. Mary A. Henriques  
Dr. and Mrs. Thomas Herremans  
Dr. Terry E. Hoover and  
Ms. Vicki M. Copeland  
Dr. Page Hudson  
Dr. and Mrs. John E. Jansheski  
Dr. Jack E. King  
Dr. Kimberly and Mr. Bradley J. Loos  
Dr. Ernest H. McDowell  
Dr. Monika M. Meekay  
Dr. Sandy Beckett Member  
Dr. Carole B. Menard  
Dr. John F. Monacell  
Dr. Eric R. Nease  
Drs. Andrew Orchin and Jill Bailey  
Dr. Patricia J. Panucci  
Dr. Robert A. Penna  
Dr. Brisbain R. Pucan  
Dr. Straty G. Righellis  
Dr. L. William Schmohl  
Dr. Joseph H. Schulz  
Mike & Mary Sudzina  
Dr. Kevin L. Theroux  
Dr. and Mrs. Bas W. Wafelbakker  
Dr. A. Jeffrey Wood  
Dr. Jaime Zambrano

### \$500 - \$999

Dr. Stephen Bradford  
Dr. Timothy Bussick  
Dr. John X. Cordoba  
Ms. Diane Descalco  
Mr. and Mrs. Sean C. Devlin  
Mr. Arthur A. Dugoni, Jr.  
Dr. Randy M. Feldman  
Ms. Sally S. Field  
Dr. and Mrs. Steven G. Garrett  
Dr. and Mrs. Giuseppe Inesi  
Dr. Paul E. Kulits  
Dr. and Mrs. Warden Noble  
Dr. John A. Pavlo  
Dr. Bruce Peltier and  
Ms. Tracey Pomeroy  
Dr. and Mrs. Dale F. Redig  
Ms. Elizabeth R. Rouleau  
Mr. Nicolas Rouleau  
Dr. and Mrs. C. Ray Sheppard  
Dr. James N. Tsau  
Dr. and Mrs. Joseph A. Zingale

### \$250 - \$499

Anonymous(1)  
Sharon D. Carman  
Dr. Elisa M. Chavez Luna  
Mr. Pei-Hua Chiao  
Dr. and Mrs. Joel A. Cohen  
Mr. Patrick Dugoni  
Mr. and Mrs. Michael Herman  
Mr. and Mrs. Matthew O. Hoffman  
Dr. Jeffrey Lem  
Ms. Marion A. Robertson  
Mr. and Mrs. Michael A. Spanos  
Mr. and Mrs. Burton D. West

### Up to \$250

Anonymous(1)  
Dr. Editha M. Aquino  
Dr. William M. Baeza  
Mr. and Mrs. Kenneth Brandt  
Mr. and Mrs. John S. Candito  
Ms. Juliet Carrillo  
Dr. D. Douglas Cassat  
Mr. Berry C. Coleman  
Mr. Edward J. Cosci  
Mr. Duke A. Dahlin  
Mrs. Anne R. Dinelli  
Ms. Emily L. Dugoni  
Ms. Ann W. Eliaser  
Mr. Victor Feld

Mrs. Evelyn A. Fiorina  
Dr. and Mrs. Bruce B. Fogel  
Mr. and Ms. David E. Gooding  
Mr. and Mrs. Doug Hanson  
Mrs. Susan D. Hennessy  
Dr. Eric J. Herbranson  
Dr. and Mrs. Stefan Highsmith  
Dr. Allan H. Hyman  
Dr. Helen F. Jow  
Mr. and Mrs. Konstantin Kalaitzidis  
Dr. and Mrs. Guy K. Kato  
Ms. Susan Koutsoukos  
Teresa Kuhlman and Family  
Drs. Michael and Joelle Lambert  
Dr. Gary W. Lee  
Mr. Paul Lee  
Mr. Jay W. Marden  
Ms. Helga E. Miles  
Mr. and Mrs. Patrick Mulligan  
Mrs. Maria L. Murtagh  
Mr. and Mrs. Robert O. Muzio  
Mrs. Lois M. Nelson  
Ms. Sinead A. O'Brien  
Dr. and Mrs. Dimitrios A. Pappas  
Gabriela and Radu Pitigoi-Aron  
Mr. James P. Roche  
Ms. Michelle A. Rosaschi  
Mr. Irving J. Sachs  
Dr. and Mrs. George A. Schneider  
Mr. Matthew R. Schueller  
Rev. James R. Scott  
Dr. and Mrs. Marvin Segal  
Dr. Kevin D. Sessa  
Ms. J. A. Shaban  
Dr. Gilbert H. Snow  
Dr. Carol G. Summerhays  
Mr. Hugh Sutton Gee  
Dr. Gregory and Jeanette Swenson  
Mrs. Harriet J. Tuchten  
Mr. Sherwyn Turbow  
Dr. and Mrs. Leonard M. Warren  
Dr. and Mrs. Charles E. Wilson  
Ms. Karen T. Yamamoto  
Dr. and Mrs. Douglas A. Young



## Businesses

### \$50,000 - \$99,999

GAC International  
Ormco Company  
Straumann USA LLC

### \$25,000 - \$49,999

Delta Dental Plan of California  
Kaiser Permanente  
Zimmer Dental

### \$10,000 - \$24,999

3M Unitek  
Cupertino Dental Group  
Dignity Health  
KLS Martin LP  
Henry Schein, Inc.  
Strategic Dental Management Services

### \$5,000 - \$9,999

American Orthodontics

### \$2,500 - \$4,999

Academy for Academic Leadership  
Inside Source/Young  
Rocky Mountain Orthodontics Inc.

### \$1,000 - \$2,499

The Office of John L. Aramini, DDS  
Heejay A. Chung, DMD, Inc.  
Drs. Epstein, Elkin and Sargiss  
Orthodontic Assoc PA  
Procter & Gamble  
Drs. Toothman & Barra Orthodontics

### \$500 - \$999

Brown Road Dental  
California Dental Arts  
Simona Family Dental PC  
The T. Rowe Price Program for  
Charitable Giving  
Valentine A Professional Corporation

### \$250 - \$499

Gap, Inc.

### Up to \$250

Salesforce Foundation

## Foundations

### \$100,000 - \$249,999

Anonymous  
Keszler Charitable Remainder Unitrust  
Hutto Patterson Charitable Foundation  
The George E. Richmond Foundation  
The Frances and John Wahl Foundation

### \$50,000 - \$99,999

Dr. and Mrs. Falconer E. Campbell and  
The Gladys Campbell Charitable  
Lead Trust

### \$25,000 - \$49,999

S. H. Cowell Foundation  
Leonard and Ilona Ling Family  
Foundation

### \$5,000 - \$9,999

Community Foundation of Gaston  
County, Inc.  
Greater Kansas City Community  
Foundation  
The Harmony Foundation  
The Trubschenck Foundation

### \$2,500 - \$4,999

The American Endowment Foundation  
Stanislaus Dental Foundation  
The Herbert K. Yee and Inez F. Yee  
Foundation

### \$1,000 - \$2,499

Bray Family Foundation

### \$250 - \$499

The Irving & Adele Rosenberg  
Foundation, Inc.

### Up to \$250

The Weinberg Foundation

## Groups, Associations, Organizations

### \$2,500 - \$4,999

Dugoni School of Dentistry  
Class of 2013

### \$250 - \$499

Northern California Academy of  
Endodontics

## Parents

### \$50,000 - \$99,999

Dr. and Mrs. Edmond Bedrossian  
The Hannon Family

### \$25,000 - \$49,999

Dr. and Mrs. Donald H. Devlin  
Dr. and Mrs. Arthur A. Dugoni

### \$10,000 - \$24,999

Dr. Kin and Lenore Ching  
Dr. and Mrs. Kenneth Y. Kai  
Dr. and Mrs. Stanley T. Lee  
Ronald and Margaret Redmond  
Dr. and Mrs. Carl Trubschenck  
Dr. and Mrs. Yuly Vilderman

### \$5,000 - \$9,999

Dr. and Mrs. Thomas R. Bales  
Drs. Gerald L. and Susan A. Bittner  
Dr. and Mrs. Joseph W. Bronzini  
Dr. and Mrs. Ronald A. Carter  
Mr. and Mrs. Christopher J. Davies  
Dr. and Mrs. Roland Nishioka  
Dr. Bertrand D. and Mrs.  
Mary Rouleau  
Drs. Gabrielle Rasi and Kevin Tanner  
Dr. James H. Van Sicklen, Jr.  
Dr. John D. West  
Craig and Nancy Yarborough

### \$2,500 - \$4,999

Dr. and Mrs. Sigmund H. Abelson  
Dr. Kelvin C. and Mrs. Ruby W. Choi  
Dr. and Mrs. Jerry Kronquist  
Dr. and Mrs. Gary K. Low  
Drs. Lauro A. and Elizabeth P. Mora  
Dr. and Mrs. Randall W. Murray  
Dr. and Mrs. F. Paul Senise  
Dr. and Mrs. Mark D. Winger  
Dr. and Mrs. Herbert K. Yee

### \$1,000 - \$2,499

Dr. Steven Bo  
Dr. and Mrs. Frank A. Brucia  
Dr. and Mrs. Clark C. Chen  
Dr. and Mrs. Stephen T. Chenin  
Dr. David T. Constant  
Richard and Leslie Cordano  
Mr. and Mrs. Michael J. Dugoni  
Dr. and Mrs. Stafford J. Duhn  
Drs. Ann Marie Silvestri and  
Tom Ellerhorst  
Dr. and Mrs. John W. Feaster  
Dr. and Mrs. John Fong  
Dr. and Mrs. Peter E. Hagen  
Mr. and Mrs. Brian D. Ham  
Dr. and Mrs. David J. Harnick  
Mr. and Mrs. Nelson K. Y. Ho  
Dr. and Mrs. Bahram Javid  
Dr. and Mrs. Douglas O. Kong  
Drs. Callin and Carolyn Lee  
Dr. William P. Lundergan  
Dr. and Mrs. Melvin L. Matsuda  
Drs. Jon Nishikubo and  
Leslie Matsumura  
Drs. Jack and Kathryn Moore  
Dr. and Mrs. Ronald W. Nichols  
Dr. and Mrs. Gary E. Pagonis  
Dr. and Mrs. James J. Passamano  
Dr. and Mrs. Daniel S. Poulson  
Drs. David and Beth Regehr  
Dr. and Mrs. Anthony K. Santos  
Dr. and Mrs. Michael J. Sayegh  
Dr. and Mrs. Dennis Shinbori  
Dr. and Mrs. Douglas Tinloy  
Dr. and Mrs. Bruce G. Toy  
Mr. and Mrs. Johnny Uy  
Dr. and Mrs. Allen M. Wong  
Dr. and Mrs. Bao Min Yee  
Mrs. Selena Lee and Mr. Sheung Yin

### \$500 - \$999

Mr. and Mrs. Bernardino Ancheta  
John and Carolyn Cardinalli  
Dr. and Mrs. Gary Y. Dodobara  
Dr. and Mrs. Richard S. Fife  
Dr. and Mrs. Ross C. Lai  
Drs. Arben and Elonia Lasku  
Dr. and Mrs. Randall C. Lum  
Dr. and Mrs. Stephen J. O'Brien  
Dr. and Mrs. Mont M. Ringer  
Dr. and Mrs. An T. Tran  
Dr. and Mrs. Duane L. Wirth

### \$250 - \$499

Dr. Theresa Frank and Mr. Ron Bucher  
Dr. and Mrs. I. Lee Ence  
Dr. Curtis D. Menard  
Ms. Irene S. Shigaki  
Mr. and Mrs. Vincent Tornabene

### Up to \$250

Mr. and Mrs. Douglas K. Christensen  
Dr. and Mrs. Steven C. Fong  
Dr. and Mrs. Garry G. Gast  
Suzanne and Larry Haas  
Mr. and Mrs. Jawad Jaber  
Mrs. Ellen Kwong  
Dr. and Mrs. Darryl L. Lee  
Dr. and Mrs. Leonard J. Levine  
Dr. James C. Mattson  
Dr. and Mrs. Charles W. McGary  
Dr. Gerald T. Shinkawa  
Dr. and Mrs. Devinder S. Shoker  
Dr. Leonard and Mrs. Freda Warren  
Drs. Tracy Ku and Thomas S. Y. Yu

## Lifetime Giving

### \$5,000,000 and above

Dr. and Mrs. Arthur A. Molinari

### \$1,000,000-\$4,999,999

Dr. Bernard S. Aarons  
Dr. and Mrs. Falconer E. Campbell and  
the Gladys Campbell Charitable  
Lead Trust  
Dr. William M. Dorfman  
Dr. Earl R. and Mrs. Tannia Hodges  
Pacific Dental Alumni Association  
Dr. James and Mrs. Carolyn Pride  
Ronald and Margaret Redmond  
Safeguard Health Plans, Inc.

### \$500,000-\$999,999

Children's Dental Health Care League  
Dr. and Mrs. Charles W. deGuerre  
Delta Dental Plan of California  
Dr. and Mrs. Arthur A. Dugoni  
Dr. Paul W. Fritch  
Dr. and Mrs. Arthur C. Konrad  
and Mr. Vernon R. Liewald  
Dr. Bruce W. Manning  
Dr. Ward and Mrs. Lynne Mortell  
Mr. and Mrs. Donald E. O'Connell  
Hutto Patterson Charitable Foundation  
Mrs. Ruth Hansen Soule  
Dr. Gaylord G. Starin  
Dr. Byron J. Thayer

### \$250,000-\$499,999

3M Unitek  
Align Technology, Inc.  
Dr. and Mrs. Thomas G. Atwood  
Dr. and Mrs. Thomas R. Bales  
Dr. and Mrs. Edmond Bedrossian  
Mr. John Cagnone  
Dr. Leroy Cagnone  
Dr. and Mrs. David S. Campbell  
Dr. Kin and Lenore Ching  
Dr. F. Gene and Rosemary Dixon  
Faculty Dental Service Group  
Dr. and Mrs. Kenneth E. Follmar  
GAC International  
Dr. and Mrs. John W. Hagan  
Dr. Chris R. and Mrs. Genevieve Keszler  
The Kresge Foundation  
Dr. Leonard L. F. Ling  
Mr. and Mrs. Gary Mitchell  
Dr. and Mrs. Robert N. Pickron  
The George E. Richmond Foundation  
Al and Dotty Warkentine  
Dr. and Mrs. Frederick T. West  
Dr. Rick Workman

### \$100,000-\$249,999

American Orthodontics  
Anonymous (2)  
Dr. and Mrs. T. Galt Atwood  
Dr. and Mrs. Alex Axelrode  
Dr. and Mrs. Braden W. Beck  
Drs. Gerald L. and Susan A. Bittner  
Dr. Gerald and Paula Bittner  
Charles and Carolyn Bloom  
Dr. and Mrs. Leo Boger  
Dr. and Mrs. Joseph W. Bronzini  
Dr. Delmar W. Byerly  
Dr. and Mrs. Dale Callanan  
Drs. Michael and Elisa Campbell  
Dr. David W. Chambers and  
Mrs. Jean Hopeman-Chambers  
Dr. and Mrs. Ronald L. Champion  
Colgate-Palmolive Company  
Mr. Fred de Roode  
DENTSPLY International, Inc.  
Dr. and Mrs. Donald H. Devlin  
Ms. Eleanor M. Donovan  
Dr. Ralph and Mrs. Frances Ermoian  
The Harry M. Ermoian Foundation  
Dr. and Mrs. Joseph V. Errante  
Drs. Kenneth F. and Lina Y. Fat  
Dr. Patrick J. Ferrillo

The Carl Gellert and Celia  
Berta Gellert Foundation  
Dr. and Mrs. Ernest G. Giachetti  
The Hannon Family  
Dr. Samuel D. Harris  
Dr. Eddie K. Hayashida  
Dr. and Mrs. John H. Hitchcock  
Dr. and Mrs. Charles P. Howard  
Mrs. Clare P. Hutto  
Dr. and Mrs. Giuseppe Inesi  
International Guardian Services  
Dr. Scott and Marsha Jacks  
Mr. Lester R. Jackson  
Ken and Bonnie Kwong  
Dr. and Mrs. David L. Lee  
Dr. and Mrs. Stanley T. Lee  
Leonard and Ilona Ling  
Family Foundation  
Dr. Larry G. Loos  
Dr. and Mrs. Richard Y. Lum  
Montgomery Street Foundation  
Dr. Bonnie Morehead  
Dr. and Mrs. Scott G. Newhart  
Dr. Quon N. Nguyen  
Dr. and Mrs. Koichi Nishimura  
Bill and Kathi Odum  
Ormco Company  
Pacific Coast Orthodontic  
Consultation Group  
Pacific Oral Pathology Laboratory  
Mrs. Jeannette Powell  
Mr. and Mrs. Thomas and  
JoAnn Prescott  
Pride Mountain Vineyard  
Dr. and Mrs. Stephen C. Rose  
Dr. Bertrand D. and Mrs. Mary Rouleau  
The Ken and Laurie Shimizu Family  
Straumann USA LLC  
Dr. and Mrs. Philip W. Strauss  
Dr. and Mrs. Daniel S. Tanita  
Drs. M. Gabrielle and Gary Thodas  
Steven and Terri Tired  
Dr. and Mrs. G. Bruce Valentine  
Dr. and Mrs. Yuly Vilderman  
Mr. Gregory J. Wahl  
Dr. Leonard and Mrs. Freda Warren  
Dr. Gary L. Weine  
Dr. and Mrs. Eugene E. West  
Western Dental Services, Inc.  
Dr. and Mrs. Colin C. Wong  
Dr. and Mrs. Herbert K. Yee  
Zimmer Dental

### \$50,000-\$99,999

AABT Investments, LLC  
Dr. and Mrs. Sigmund H. Abelson  
Dr. David I. Alpan  
American Fund For Dental Health  
Ms. Mary L. Ankerbrand  
Anonymous  
Drs. Nashat and Samia Ateia  
Drs. Glenn Belen and Elizabeth  
Vasco Belen  
Dr. and Mrs. Bennie V. Biancalana  
Biomet 3i  
Dr. Ronald F. Borer  
Dr. and Mrs. Frank A. Brucia  
Dr. L. Stephen Buchanan  
Mrs. Zorka Bukar  
Dr. Dorothy Burk and Mr. Ken Harrison  
Dr. and Mrs. James A. Campbell, Jr.  
Dr. Marvin B. and Peggy S. Carnow  
Dr. and Mrs. W. M. Carpenter  
C.E. Endodontics Extraordinaire  
Drs. Tony and Virginia Chan  
Drs. Wai Ming Chan and Ruby S. Yu  
Dr. Robert Christoffersen  
Mr. and Mrs. Alden W. Clausen  
Dr. and Mrs. Craig L. Coombs  
Drs. Robert M. and Marina P. Cuenin  
Dental Auxiliary UOP  
Drs. Robert and Nancy Dinh  
Dr. and Mrs. Enrico E DiVito  
Dr. and Mrs. Mark S. Douglas  
Jim and Joan Dox  
Dr. and Mrs. Steven A. Dugoni

Dr. and Mrs. Dean L. Duncan  
Drs. Ann Marie Silvestri and  
Tom Ellerhorst  
Dr. and Mrs. James N. Ence  
The Ralph Ermoian Foundation  
Dr. and Mrs. L. Roy Eversole  
Dr. Nava Fathi  
Dr. and Mrs. John W. Feaster  
Dr. Michael and Mrs. Joanne Fox  
Dr. and Mrs. Kenneth Frangadakis  
Mr. Lonnie Frangadakis  
Dr. and Mrs. Roy M. Frank and  
Dr. Scott R. Frank  
Amy and Mort Friedkin  
Dr. and Mrs. John P. Gaebel  
Dr. Mario and Ida Mae Gildone  
The Gluskin Family  
Dr. Brian L. Grey  
Dr. and Mrs. Michael F. Hair, Sr.  
William Randolph Hearst Foundation  
Dr. Mark Hochhalter  
Dr. and Mrs. Kenneth G. Holcombe  
Dr. and Mrs. Kenneth F. Hovden  
The A. Thomas Indresano Family  
Peter and Gwendolyn Jacobsen  
Dr. and Mrs. Kenneth Y. Kai  
Kaiser Permanente  
Dr. and Mrs. Nestor D. Karas  
Dr. and Mrs. John B. Kennedy  
Dr. Scott Y. J. Kim and Mrs. Susie Kim  
Koret Foundation  
Dr. Leonard L. and Mrs. Ellen Kwong  
Dr. and Mrs. Martin S. Lasky  
Drs. Michael and Jill Cohen Lasky  
Dr. Theodore and Mrs. Laura Lee  
Dr. Franklin H. Locke, Jr.  
Dr. and Mrs. Michael G. Long  
Dr. and Mrs. Lyndon S. Low  
Dr. and Mrs. Irwin Marcus  
The Dr. J. Rodney Mathews Family  
Mr. and Mrs. John L. McCarthy  
Dr. Julia McGary  
Dr. Phillip W. Merrell  
Dr. and Mrs. A. Donald Miller  
Dr. and Mrs. David D. Moore, Sr.  
Joe Morgan Youth Foundation  
Dr. and Mrs. David B. Nielsen  
Mrs. Lynne Frank Page  
Dr. and Mrs. James J. Passamano  
Dr. Michael H. Payne  
Dr. and Mrs. Terence B. Pegel  
Drs. Michael L. and Paula Perich  
Dr. Monte F. Person  
Dr. and Mrs. Tom Pitts  
Professional Practice Capital  
Mrs. Pearl Reid  
Dr. and Mrs. Clifford J. Ruddle  
Dr. and Mrs. Jack M. Saroyan  
Dr. and Mrs. Victor J. Savage  
Dr. and Mrs. F. Paul Senise  
Milton Shoong Foundation  
Dr. and Mrs. Eugene P. Smith  
Dr. Gregory and Jeanette Swenson  
Linda and Bud Tarrson  
Drs. Kenneth and Konni Tittle  
Straumann USA LLC  
Dr. William van Dyk and  
Ms. Margi Sullivan  
Dr. Nicolas S. Veaco  
Drs. Louis S. and Betty S. Vodzak  
Dr. Gregory V. Wadden  
Dr. Joseph M. and Eily Yamamoto  
Craig and Nancy Yarborough

### \$25,000-\$49,999

Dr. and Mrs. John H. Albrecht  
American Dental Association  
Anonymous (3)  
Dr. and Mrs. S. Douglas Arakawa  
Dr. James D. Atwood  
Dr. Maryse and Mr. Remy Aubert  
Dr. John H. Barakat  
Dr. Ron and Maureen Barbieri  
Drs. G. Douglas and Rita M. Barkett  
Dr. and Mrs. Sheldon Baumrind  
Beauchamp Family Foundation

Dr. Stephen M. Beck  
Dr. and Mrs. A. Scott Bennion  
Big Tree Foundation  
Mrs. Cheryl Katz Bigman  
Dr. Sandy Bigman  
Dr. Robert L. Boyd  
Brasseler, USA  
Dr. and Mrs. Karl Brose  
Dr. Alan W. Budenz  
Dr. and Mrs. Michael E. Cadra  
California Assoc. of Oral and  
Maxillofacial Surgeons  
California Pacific Medical Center  
Dr. and Mrs. Martin Carnow  
Dr. Leslie and Mr. Scott Carpenter  
Mr. and Mrs. Michael P. Carroll  
Dr. and Mrs. Ronald A. Carter  
Dr. and Mrs. Wen Y. Chao  
Dr. and Mrs. H. Michael Chase  
Dr. Kelvin C. and Mrs. Ruby W. Choi  
Drs. Marin and Mariana Ciobanu  
Dr. and Mrs. Clayton T. Cooke  
Richard and Leslie Cordano  
S. H. Cowell Foundation  
Drs. Stephen and Kimberly Dankworth  
Dr. and Mrs. Laurence A. Darrow  
Delta Dental Plan of California  
Dr. and Mrs. Mark Detrick  
Dr. Bella Doshi and Mr. Chet Bhavsar  
Dr. and Mrs. John Doucet  
Ray and Jackie Doumanian  
Dr. and Mrs. Richard M. Dunn  
Dr. and Mrs. John I. Esterkyn  
Drs. Robert Dyer and Christina Fantino  
Dr. and Mrs. Nicholas W. Feldman  
Dr. Susan H. Fisher  
Dr. and Mrs. Kenneth E. Follmar II  
Dr. Richard Fredekind and  
Ms. Linn Brown  
Dr. and Mrs. Robert Fry  
Mrs. Norma Geissberger  
Mrs. Jane K. Gertler  
Dr. and Mrs. Robert C. Golden  
Dr. Raymond J. Graves  
Dr. L. Donald Guess  
Dr. and Mrs. Herbert W. Gundersen, Jr.  
Dr. and Mrs. Foroud Hakim  
The Harmony Foundation  
Dr. and Mrs. Harry H. Hatasaka  
Dr. and Mrs. Randall T. Hayashi  
Dr. Donna J. Hellwinkel  
Dr. and Mrs. Dale B. Herrero  
Dr. and Mrs. Richard F. Hoedt, Sr.  
Dr. Henry S. Holand  
Dr. and Mrs. Robert W. Hortin  
Dr. Caren F. Hovden  
Dr. and Mrs. Howard L. Hunt  
Mrs. Sandra Hunt  
Mr. David P. Jackson  
Dr. and Mrs. Richard W. Jeffery  
Drs. Chester Jeng, JD, LLM and  
Laura Lee-Jeng  
Dr. Carl J. Johnson  
Dr. and Mrs. Michael W. Jory  
Dr. and Mrs. Dennis M. Kalebjian  
Mr. and Mrs. Boris Kamanina  
Dr. Barry G. Kami  
Dr. and Mrs. George D. Karsant, Jr.  
Dr. and Mrs. Garrett R. Kawata  
Dr. John Young Jin Kim and Dr. Misty  
Ann Cervantes-Kim  
Dr. Christine Kirchner  
Dr. Mark K. Kitamura  
Dr. Arden L. Kwong  
Dr. and Mrs. Jeff Kwong  
Mr. Kevin D. Kwong  
Dr. Catherine A. Lambeteccio  
Dr. Albert O.J. Landucci  
Dr. and Mrs. Kenneth E. Lange  
Dr. Lance and Sherrie Larson  
Dr. and Mrs. Darryl L. Lee  
Dr. and Mrs. Jacob Lee  
Dr. Alan S. and Mrs. Joan S. Leider  
Dr. Susan Locke Lindsay  
Dr. and Mrs. Thomas E. Love  
Dr. William G. Low Family



Dr. and Mrs. Elliott Low  
 Dr. and Mrs. Everett L. Low  
 Dr. and Mrs. Gary K. Low  
 Dr. and Mrs. Lester H. Low  
 Dr. Reginald I. Low  
 Dr. and Mrs. Willard H. Low  
 Dr. and Mrs. Armand A. Lugassy  
 Dr. Lester Machado  
 Dr. Alan D. Marcus  
 Dr. and Mrs. Keith L. Martz  
 Mr. and Mrs. James L. McGalliard  
 Dr. and Mrs. R. James Megquier  
 Dr. and Mrs. Haig C. Merigan  
 Dr. and Mrs. Larry J. Meyer  
 Dr. and Mrs. Jade A. Miller  
 Dr. and Mrs. Scott W. Milliken  
 Mrs. Helen Minye  
 Mr. Edward J. Mitchell  
 Dr. Joe I. Mitchell  
 Dr. Philip C. Mooberry  
 Chao Mu Foundation  
 Dr. Arthur A. Mugnolo  
 Dr. and Mrs. James F. Mulick  
 Dr. and Mrs. Daniel J. Murray  
 Dr. and Mrs. Randall W. Murray  
 Dr. and Mrs. Theodore A. Murray, Jr.  
 Drs. Nader and Nilou Nadershahi  
 Dr. Nicole Nalchajian and  
 Mr. Toufik Harmaz  
 Nobel Biocare  
 Dr. and Mrs. Jack M. Oberti  
 Dr. and Mrs. John E. O'Donnell  
 Dr. and Mrs. Robert W. Oliver  
 Dr. Robert S. Oliver  
 Omicron Kappa Upsilon  
 Dr. Paul P. Ortner IV  
 Dr. and Mrs. Paul Ouellette  
 Pacific Dental Services  
 Dr. and Mrs. Gary E. Pagonis  
 Dr. and Mrs. Shailesh K. Patel  
 Patterson Dental Supply, Inc.  
 Drs. Brian Payne and Leslie Jue  
 The Pea Press  
 Procter and Gamble  
 Dr. William D. Rawlings  
 Dr. John E. Rhoads  
 Dr. and Mrs. Paul W. Riley  
 Dr. and Mrs. Mont M. Ringer  
 Dr. Darron R. Rishwain  
 Dr. Daniel P. Robinson  
 Drs. Julie Robinson and David Nielson  
 Rocky Mountain Orthodontics Inc.  
 Dr. and Mrs. Martyn F. Rosa  
 Dr. Michael and Susan Rosenthal  
 Drs. Pooneh Sabo and Kia Ramezani  
 Drs. J.J. and Ellery Salehieh  
 Dr. Edward S. Salkin  
 San Joaquin Dental Society  
 Dr. and Mrs. Michael H. Sander  
 Drs. Noelle and Eugene Santucci  
 Dr. and Mrs. Earl L. Saugert  
 Dr. and Mrs. John Saunderson  
 Dr. and Mrs. William A. Schaedler  
 Dr. Weldon K. Schapansky  
 Henry Schein, Inc.  
 Dr. John Schulz and Mrs.  
 Barbara Eisenhauer  
 Dr. Bruce Scott and Mrs.  
 Terri Adams-Scott  
 Dr. and Mrs. Raymond Scott  
 Dr. William M. Seal  
 Ms. Deborah G. Seymour  
 Mr. Andrew V. S. Shaw  
 Dr. and Mrs. Llewellyn A. Shelton  
 Dr. Christine K. Shigaki  
 Dr. and Mrs. Dennis Shinbori  
 Dr. and Mrs. Louis H. Silveira  
 Drs. Edward F. Savio, Sr. and  
 Coragene I. Skelley  
 Ms. Elinor Smith  
 Dr. and Mrs. Philip R. Snow  
 Dr. Thomas H. Sorensen  
 Dr. Timothy and Phil Stoll  
 Dr. and Mrs. Herbert J. Stuart  
 Dr. David S. Suga

Dr. and Mrs. Goro J. Suga  
 The Sunflower Foundation  
 Dr. and Mrs. Melvin E. Taves  
 Dr. and Mrs. Jeffrey E. Teutsch  
 Dr. and Mrs. Douglas Tinloy  
 Dr. and Mrs. Edward F. Tom  
 Dr. Brian and Michelle Toorani  
 Dr. and Mrs. Bruce G. Toy  
 Dr. Louis J. Tricerri  
 Dr. and Mrs. Carl Trubschenck  
 Dr. and Mrs. James H. Van Sicklen, Jr.  
 Dr. Adrian J. Vande Merwe  
 Dr. and Mrs. Laurent T. Vien  
 Drs. Scott and Elizabeth Walker  
 Dr. Frank M. Walter  
 Dr. and Mrs. Fredric R. Warren  
 Dr. and Mrs. Maurice M. Weikel  
 Dr. John D. West  
 Dr. and Mrs. Elliott L. Wien  
 Ms. Kelsey Wirth  
 Dr. Richard F. Wolven  
 Dr. Ralan and My Wong  
 Dr. and Mrs. Thad S. Kawakami-Wong  
 Dr. Debra Woo and Mr. Bill Benoit  
 Dr. Richard A. Woods  
 Xelan Foundation  
 Dr. and Mrs. Stephen S. Yuen  
 Dr. Saam Zarrabi

## Named Endowments

### *Departments, Facilities and Operations*

Alumni Association of Dugoni School of Dentistry Endowment  
 Dr. Braden W. and Joyce Ann Beck Endowment for Orthodontics  
 Bigman Family Endowment for Orthodontics  
 The Carnow Family Endowment  
 Dr. Robert Christoffersen Facilities Endowment  
 Classroom Technology Endowment  
 Endodontic Department Endowment in honor of Dr. Alan Gluskin  
 Gaebel Family Endowment  
 Dr. Ernest G. and Marcia L. Giachetti Endowment  
 International Guardian Services Endowment  
 Jacks Family Endowment  
 Dr. Chester Jeng and Dr. Laura Lee-Jeng Endowment  
 Thomas W. Karnes Endowment for the Dept. of Oral Surgery  
 Dr. Jade A. Miller Family Endowment  
 Morehead Technology Endowment  
 P&S Class of 1961 by Dr. and Mrs. Keith L. Martz  
 PORG Endowment for Orthodontic Education  
 Dr. Hugh D. Phillips Research Endowment  
 Dr. Mont and Melinda Ringer Endowment  
 Silvestri-Ellerhorst Family Endowment  
 Dr. Ernest G. Sloman Library Endowment  
 Philip W. and Barbara J. Strauss Endowment  
 Dr. and Mrs. Douglas Tinloy Endowment  
 Ata M. Toorani Endowment by Dr. Brian Toorani & Family  
 Dr. and Mrs. Louis J. Tricerri Endowment  
 Dr. Q. W. Ward Museum Endowment

### *Faculty*

John and Erolyn Albrecht Endowment  
 Dr. and Mrs. A. Scott Bennion Family Endowment  
 Dr. and Mrs. Michael E. Cadra Endowment  
 David W. Chambers & Jean M. Hopeman Endowment for  
 Professional Development  
 Dr. Robert Christoffersen Faculty Endowment  
 Mario Errante Endowment  
 The Esterkyn Family Endowment  
 Dr. Louis J. and Norma Grosso Geissberger Faculty Endowment  
 Alan and Riitta Gluskin Family Endowment  
 Dr. Mark S. Hagge Faculty Endowment  
 Dr. Dale B. and Jill C. Herrero Faculty Endowment  
 Hunt Family Endowment for Orthodontic Clinical Research  
 Indresano Family Endowment  
 Dr. and Mrs. Nestor D. Karas Endowment for Oral Surgery  
 Dr. Albert O. J. Landucci Endowment for Teaching Specialties  
 Moore Family Endowment  
 Bill and Kathi Odom Endowment  
 Michael and Susan Rosenthal Family Endowment  
 Dr. Ronald H. Roth Orthodontics Endowment  
 Linda and E.B. Tarrson Endowment  
 Drs. Kenneth W. Tittle and Konni Kawata Tittle Endowment.  
 for Endodontics  
 John D. West Endowment  
 Arlan Wong Endowment for Endodontics

### *Patients*

Gellert Endowed Fund for Pediatric Dentistry  
 Hearst Foundation Endowment for Pediatric Oral Healthcare  
 Kids In The Clinic Endowment  
 Dr. Shailesh (Sam) K. & Mrs. Kalpana Patel Endowment  
 Soderstrom Family Pediatric Care Fund

### *Chairs and Professorships*

Dr. Bernard S. Aarons Endowed Professorship  
 Dr. T. Galt and Lee DeHaven Atwood Endowed Professorship  
 Dr. Ronald F. Borer Endowment  
 Dr. Charles W. deGuerre Endowed Professorship  
 Donald Devlin Endowment  
 Dr. Arthur A. Dugoni Endowed Professorship in Orthodontics  
 Dr. Samuel D. Harris Endowed Professorship in Pediatrics  
 Dr. Henry A. Sutro Family Endowed Chair In Restorative Dentistry  
 Dr. Earl and Tannia Hodges Endowed Professorship II  
 Dr. Earl R. and Tannia Hodges Endowed Chair  
 Dr. Earl R. and Tannia Hodges Endowed Professorship  
 Jim & Carolyn Pride Endowed Chair - Dept of Dental Practice  
 Dr. Frederick T. West Endowed Chair in Orthodontics

### *Students*

Dr. Bernard S. Aarons Scholarship Fund  
Dr. William E. Allen Scholarship Endowment  
Alumni Association Scholarship Endowment  
Dr. S. Douglas Arakawa Scholarship Endowment  
Dr. Thomas R. Bales Family Endowment  
Dr. Bedrossian Family Scholarship Endowment  
Dr. Leroy D. Cagnone Scholarship Endowment  
Dr. Bob Campbell Scholarship Endowment  
Dr. Kevin J. Campbell Scholarship Endowment by School of Dentistry  
Class of '82 in memory of their classmate  
Dr. Oscar Campbell Family Endowed Scholarship  
Drs. Wai Ming Chan and Ruby Yu Endowed Scholarship  
Dr. Harry Michael and Judy Nowland Chase Scholarship Endowments  
Roger Courpet Scholarship Fund  
Dental Student Award Endowment  
Derric DesMarteau Endowment  
Dr. F. Gene and Rosemary Dixon IDS Endowment  
The Doshi-Bhavsar Scholarship Endowment by Dr. Bella Doshi and  
Chet Bhavsar and Mr. and Mrs. Aroon Doshi  
Dr. Arthur & Kaye Dugoni Student Scholarship Endowment  
Dr. James and Deborah Ence Family Endowment  
Dr. and Mrs. Ralph P. Ermoian Scholarship Endowment  
Nicholas W. Feldman & Maria E. de Leon Endowed Scholarship  
Follmar Family Endowment Fund  
Dr. Sidney R. Francis Scholarship Endowment  
Dr. Kenneth Frangadakis Family Scholarship Endowment  
Lonnie Frangadakis, California Dental Arts, LLC Endowed Scholarship  
Dr. Paul Wesley Fritch Endowed Memorial Loan Fund  
Dr. and Mrs. Mario E. Gildone Scholarship Endowment  
Al and Mary Ann Gilmour Student Scholarship Endowment  
Dr. Jack N. and Karen D. Hadley Endowed Scholarship  
Leo S. & Shirley M. Hayashi Scholarship Endowment  
Dr. Yukishige Hayashi Scholarship Endowment  
Dr. Eddie K. Hayashida Student Government Endowment  
The Hellwinkel Family Endowed Scholarship  
Dr. John & Elizabeth Hitchcock Scholarship Fund  
Hovden Family Endowment  
Dr. Charles P. and Margaret S. Howard Scholarship Endowment  
Dr. Giuseppe Inesi Endowment Prize in Basic Medical Sciences  
Dr. Peter and Gwendolyn Jacobsen Scholarship Endowment  
Kalebjian Family Scholarship Endowment  
Arthur C. Konrad Endowed Memorial Scholarship  
Dr. Jeffrey Brian Kwong Endowment  
Dr. Leonard L. Kwong Family Scholarship Endowment  
Mr. Milton C. Lambertson Scholarship Endowment  
The Lasky Family Endowment  
Dr. David L. Lee Family Scholarship Endowment  
Dr. James J. Leib Scholarship Endowment  
The Loos Family Endowment  
Dr. Curtis C. Menard Memorial Scholarship Endowment  
Dr. Todd M. Mendel Memorial Scholarship Endowment by School of Dentistry  
Class of '92 in memory of their classmate  
Dr. Larry J. Meyer and Rosalie J. Meyer Endowed Scholarship  
Mitchell Family Endowment  
Dr. Arthur and Ruth Molinari and Daughter Joan Endowment  
Nalchajian Family Scholarship Endowment  
Pacific Oral Pathology Laboratory Scholarship Endowment  
Drs. Milton and Gary Pagonis Scholarship Endowment  
Drs. Brian Payne and Leslie Jue Family Scholarship Endowment  
Dr. Jim and Carolyn Pride Scholarship Endowment  
Dr. Martyn F. Rosa Scholarship Endowment  
Bert and Mary Rouleau Family Endowment  
Salehieh & Shehabi Family Scholarship  
San Joaquin Dental Society Hygiene Scholarship  
Dr. Christine Shigaki Endowed Scholarship  
Dr. and Mrs. Eugene P. Smith Scholarship Endowment  
Henry Sutro Senior Restorative Award Best Oral Rehab Design  
Dr. Charles, Charles Jr. and Joe Sweet Scholarship Endowment  
Dr. Ernest H. and Grace Vamos Scholarship Endowment  
Dr. Yuly and Albina Vilderma IDS Scholarship Endowment  
The Warren Family Endowment  
Dr. Richard A. Woods Endowment Fund  
Ms. Lucille Woolsey Scholarship Endowment  
Dr. Joseph M. and Elly Yamamoto Scholarship Endowment  
Dr. Joseph H. Yamamoto and Debra T. Oka Scholarship End.  
Dr. Herbert K. Yee Scholarship Endowment

### *Unrestricted*

Dr. and Mrs. Ben Biancalana Endowment  
Bittner Family Endowment,  
Lee and Donna Boger Family Endowment  
The Burk and Harrison Endowment  
Dr. Kin Ching Endowment  
Kelvin C. and Ruby W. Choi Endowment  
Class of 1956 Endowment  
Class of 1975 Endowment  
Class of 1995 Endowment  
Drs. Robert and Marina Cuenin Family Endowment  
Dr. Enrico and Rita DiVito Family Endowment  
Dr. Noelle Falkow Endowment  
The Fox Family Endowment  
Dr. Coleman and Mrs. Jane K. Gertler Endowment  
Dr. Garrett M. Guess Endowment  
Invisalign Endowment  
Dr. and Mrs. Chris Keszler Endowment  
Scott Y. and Susie Kim Endowment  
Dr. Jacob and Mrs. Sophie Lee Endowment  
Dr. Franklin H. Locke, Sr. Endowment  
Elliott and Kelly Low Endowment  
Dr. Lawrence K. Low Family Endowment  
Dr. and Mrs. Lyndon S. Low Endowment  
Dr. Jim and Lynn Megquier Endowment  
Chao Mu Endowment Fund  
Mrs. Lillian Quandt Murray Endowment  
Dr. David Nielson & Dr. Julie Robinson Family Endowment  
Dr. Mark M. and Tiffany K. Nishimura Endowment  
Dr. and Mrs. Jack M. Oberti Endowment  
Paul and Patricia Ouellette Family Endowment  
Professional Practice Capital LLP Endowment  
Dr. Stephen and Marsha Rose Endowment  
Dr. Pooneh Sabo and Family Endowment  
Barbara, John, Chuck and Abbie Schulz Family Endowment  
Dr. F. Paul Senise Family Endowment  
Ken and Laurie Shimizu Family Endowment  
Suga Family Endowment  
Shigeru and Haru Tanita Family Endowment  
Dr. Byron J. Thayer Endowment  
Dr. and Mrs. Yuly Vilderma and Family Endowment  
Dr. Gary Weiner Endowment



## Endowment and Legacy Society

Dr. and Mrs. Mehran Abbassian  
Dr. and Mrs. Sigmund H. Abelson  
Dr. Ali Alijanian  
Mrs. Marky Allen  
Dr. Janet Andrews and Mr. David Howes  
Dr. Douglas T. Arakawa,  
Dr. William J. Asbury  
Dr. John K. Baird  
Dr. and Mrs. Thomas R. Bales  
Dr. Ron and Maureen Barbieri  
Mrs. June Battin  
Dr. and Mrs. Gary R. Baughman  
Dr. and Mrs. C. Stuart Beach  
Dr. and Mrs. Braden W. Beck  
Dr. Shelley A. Bedard  
Dr. and Mrs. Edmond Bedrossian  
Dr. and Mrs. John A. Bennett  
Dr. and Mrs. A. Scott Bennion  
Mrs. Leila Biancalana  
Dr. Sandy Bigman  
Mrs. Cheryl Katz Bigman  
Drs. Gerald L. and Susan A. Bittner  
Dr. Gerald and Paula Bittner  
Charles and Carolyn Bloom  
Dr. and Mrs. Leo Boger  
Dr. Ronald F. Borer  
Dr. Jeffery L. Broman  
Dr. and Mrs. Karl Brose  
Dr. and Mrs. Frank A. Brucia  
Dr. Edward P. Bryan  
L. Stephen Buchanan DDS, FICD, FACD  
Dorothy Burk and Ken Harrison  
Dr. and Mrs. Michael E. Cadra  
Dr. Leroy Cagnone and  
Mr. John Cagnone  
Dr. Ray O. Caoili  
Dr. and Mrs. Marvin B. Carnow  
Dr. and Mrs. Martin Carnow  
Drs. Charles F. and Diana F. Carpenter  
Dr. and Mrs. Ronald A. Carter  
Dr. David W. Chambers and  
Mrs. Jean Hopeman-Chambers  
Dr. and Mrs. Ronald L. Champion  
Drs. Wai Ming Chan and Ruby S. Yu  
Dr. Loretta Chee Phillips and  
Mr. Mark Phillips  
Dr. Kin and Lenore Ching  
Dr. Kelvin C. and Mrs. Ruby W. Choi  
Dr. Robert Christoffersen  
Dr. A. Roy and Ann Cleghorn  
Dr. Terry Cotterell  
Dr. Jennifer L. Crandall  
Dr. and Mrs. John B. Croft  
Drs. Robert M. and Marina P. Cuenin  
Dr. and Mrs. Craig H. Davis  
Dr. and Mrs. Richard R. Dell'Acqua  
Dr. Rene Y. Dell'Acqua  
Dr. and Mrs. Donald H. Devlin  
Dr. and Mrs. Robert E. Di Grazia  
Dr. Robert P. Didier  
Dr. and Mrs. Enrico E. DiVito  
Dr. and Mrs. Michael T. Don  
Dr. William M. Dorfman  
Dr. Robert L. Dorian  
Dr. Bella Doshi and Mr. Chet Bhavsar  
Mr. and Mrs. Aroon Doshi  
Dr. Roni Douglas and Mr. Marty Ganulin  
Ray and Jackie Doumanian  
Dr. and Mrs. Arthur A. Dugoni  
Dr. and Mrs. Steven A. Dugoni  
Drs. David and Parizad Ehsan  
Drs. Ann Marie Silvestri and  
Tom Ellerhorst  
Dr. and Mrs. James N. Ence  
Mr. Harry M. Ermoian  
Dr. and Mrs. Joseph V. Errante  
Dr. and Mrs. John I. Esterkyn  
Drs. J.C. Fat and Shareen Char-Fat  
Dr. Nava Fathi  
Dr. and Mrs. John W. Feaster  
Dr. David Feder and  
Ms. Elizabeth Luttrell  
Dr. and Mrs. Nicholas W. Feldman  
Dr. and Mrs. Fred J. Fendler  
Dr. Patrick J. Ferrillo, Jr.  
Dr. and Mrs. Morel Fidler  
Dr. and Mrs. Kenneth E. Follmar II  
Dr. and Mrs. Michael A. Follmar  
Dr. Michael and Mrs. Joanne Fox  
Dr. and Mrs. Kenneth Frangadakis  
Lonnie and Elaine Frangadakis,  
California Dental Arts  
Richard Fredekind and Linn Brown  
Dr. and Mrs. John P. Gaebel  
Dr. and Mrs. Marc J. Geissberger  
The Carl Gellert and Celia  
Berta Gellert Foundation  
Dr. Coleman and Mrs. Jane Gertler  
Jamshid L. Ghafourpour  
Mr. Ali A. Ghassemieh  
Mrs. Firouzeh Ghassemieh  
Mr. Farhad Ghassemieh  
Ms. Soraya Ghassemieh  
Mr. Feridon Ghassemieh  
Dr. and Mrs. Ernest G. Giachetti  
Dr. and Mrs. Russell O. Glauser  
The Gluskin Family  
Dr. and Mrs. Edward T. Graham  
Dr. Brian L. Grey  
Dr. and Mrs. L. Donald Guess  
Dr. and Mrs. Mark N. Hadley  
Dr. and Mrs. Foroud Hakim  
Drs. Charles and Gwen Halterman  
Dr. and Mrs. Frank Hann  
The Hannon Family  
Dr. Kellie Harris  
Dr. and Mrs. Randall T. Hayashi  
Ms. Yukiyo R. Hayashi  
Shigeyo Hayashi Nakamura  
Dr. Eddie K. Hayashida  
William Randolph Hearst Foundation  
Dr. Donna Hellwinkel and  
Mr. Darrell Armuth  
Dr. and Mrs. Dale B. Herrero  
Dr. Mark Hochhalter  
Dr. and Mrs. Robert W. Hortin  
Dr. Caren Hovden and  
Mr. William Morgan  
Dr. and Mrs. Kenneth F. Hovden  
Dr. and Mrs. John A. Hughes  
Dr. and Mrs. Howard L. Hunt  
The A. Thomas Indresano Family  
Dr. and Mrs. Giuseppe Inesi  
International Guardian Services  
Dr. Scott and Marsha Jacks  
Peter and Gwendolyn Jacobsen  
Dr. and Mrs. Joel N. Janis  
Dr. and Mrs. Richard W. Jeffery  
Drs. Chester and Laura Jeng  
Dr. Mary R. Johnson  
Dr. and Mrs. Dennis M. Kalebjian  
Dr. and Mrs. Nestor Karas  
Dr. and Mrs. Peter A. Karsant  
Dr. and Mrs. Thomas D. Keller  
Mrs. Genevieve Keszler  
Dr. and Mrs. Scott Y. J. Kim  
Dr. and Mrs. Peter C. Knudson  
Dr. and Mrs. Arden L. Kwong  
Mrs. Ellen Kwong  
Mrs. Bonnie Jean Kwong  
Mrs. Virginia Lambertson  
Dr. Albert O.J. Landucci  
Drs. Jill and Michael Lasky  
Dr. and Mrs. Martin S. Lasky  
Dr. Timothy W. Leary  
Dr. Gary W. Lee  
Dr. and Mrs. Michael G. Long  
Dr. and Mrs. Everett L. Low  
Dr. and Mrs. Elliott Low  
Dr. and Mrs. Lyndon S. Low  
Dr. Lester Machado  
Dr. Victor R. Mancuso, Jr.  
Dr. and Mrs. Jerry D. Mancuso  
Dr. and Mrs. Anthony A. Marcos  
Dr. Jill A. Martenson  
Dr. and Mrs. Keith L. Martz  
Dr. Ben B. Maze  
Tom and Sue McConnell  
Dr. Julia McGary  
Dr. and Mrs. R. James Megquier  
Geneanne M. Mendel, RDH  
Dr. and Mrs. Larry J. Meyer  
Dr. and Mrs. Jade A. Miller  
Dr. and Mrs. Leslie Minye  
Mr. Edward J. Mitchell  
Mr. and Mrs. Gary M. Mitchell  
Dr. and Mrs. Leland A. Mlejnek  
Ms. Karen Moawad  
Dr. and Mrs. David D. Moore. Sr.  
Dr. Victoria Moore and Mr. Ron Wu  
Dr. Bonnie Morehead and  
Mr. John James  
Dr. and Mrs. Mark S. Moss  
Dr. and Mrs. Theodore A. Murray, Jr.  
Drs. Nader and Nilou Nadershahi  
Dr. Nicole Nalchajian and  
Mr. Toufik Harmaz  
Dr. and Mrs. David B. Nielsen  
Drs. Julie Robinson and David Nielson  
Dr. and Mrs. Koichi Nishimura  
Dr. and Mrs. Jack M. Oberti  
Bill and Kathi Odum  
Dr. and Mrs. William G. Oliver  
Dr. and Mrs. Robert S. Oliver  
Dr. Edward I. Orson  
Dr. Paul P. Ortner IV  
Dr. and Mrs. James K. Ott  
Dr. and Mrs. Paul Ouellette  
Pacific Dental Alumni Association  
Dr. and Mrs. Gary E. Pagonis  
Dr. and Mrs. Milton J. Pagonis  
Dr. and Mrs. Shailesh K. Patel  
Drs. Brian Payne and Leslie Jue  
Dr. Michael H. Payne  
Dr. and Mrs. Tom Pitts  
Dr. Bridget M. Powers-Gamble and  
Mr. Ken Gamble  
Mr. and Mrs. Thomas and JoAnn Prescott  
Dr. Beverly and Mr. Gary R.  
Presley-Nelson  
Dr. James and Mrs. Carolyn Pride  
Dr. Susan J. Protzel  
Ronald and Margaret Redmond  
Dr. and Mrs. Michael Ricupito  
Dr. and Mrs. Richard E. Ridgley  
Dr. and Mrs. Mont M. Ringer  
Dr. and Mrs. W. Eugene Roberts  
Dr. and Mrs. Victor G. Romley  
Dr. and Mrs. Martyn F. Rosa  
Dr. and Mrs. Stephen C. Rose  
Dr. Michael and Susan Rosenthal  
Dr. Neil D. Ross  
Dr. Bertrand D. and Mrs. Mary Rouleau  
Dr. and Mrs. Clifford J. Ruddle  
Dr. and Mrs. Gary D. Sabbadini  
Drs. Pooneh Sabo and Kia Ramezani  
Drs. J.J. and Ellery Salehieh  
Dr. Edward S. Salkin  
San Joaquin Dental Society  
Dr. and Mrs. Michael H. Sander  
Dr. and Mrs. Jack M. Saroyan  
Dr. and Mrs. John Saunderson  
Dr. Louis A. Schmidt  
Dr. John Schulz and Mrs.  
Barbara Eisenhauer  
Dr. Donald F. Schutte  
Dr. and Mrs. Raymond Scott  
Dr. and Mrs. F. Paul Senise  
Dr. and Mrs. C. Ray Sheppard  
Dr. Christine K. Shigaki  
The Ken and Laurie Shimizu Family  
Dr. Ronald G. Shrader  
Dr. and Mrs. Philip R. Snow  
Dr. and Mrs. Peter Soderstrom  
Dr. Susan Soderstrom  
Elizabeth Soderstrom, RDH, MA  
Dr. and Mrs. Andrew P. Soderstrom  
Dr. Diane W. Stacey  
Dr. Gaylord G. Starin  
Dr. Cathrine L. Steinborn  
Dr. Timothy and Phil Stoll  
Dr. and Mrs. Philip W. Strauss  
Dr. and Mrs. Goro J. Suga  
Drs. Kristi Doberenz and Mark Swimmer  
Dr. and Mrs. Samuel A. Tadros  
Dr. and Mrs. Theodore A. Tanabe  
Dr. and Mrs. Daniel S. Tanita  
Linda and Bud Tarrson  
Dr. and Mrs. Rick Thiriot  
Drs. M. Gabrielle and Gary Thodas  
Dr. and Mrs. Douglas Tinloy  
Dr. and Mrs. Robert S. Toenjes  
Dr. and Mrs. Lenny Tolstunov  
Dr. Brian and Michelle Toorani  
Dr. Louis J. Triccerri  
Dr. and Mrs. Carl Trubschenck  
Dr. Lawrence K. Tseu  
Mr. Gordon J. Tucker  
Dr. and Mrs. G. Bruce Valentine  
Dr. William van Dyk and  
Ms. Margi Sullivan  
Dr. Adrian J. Vande Merwe  
Dr. and Mrs. Yuly Vilderman  
Drs. Louis S. and Betty S. Vodzak  
Dr. and Mrs. Fredric R. Warren  
Dr. Leonard and Mrs. Freda Warren  
Dr. and Mrs. Gary L. Weiner  
Dr. John D. West  
Dr. Carl M. White  
Dr. Ralan and My Wong  
Dr. and Mrs. Colin C. Wong  
Dr. Richard A. Woods  
Joseph H. Yamamoto  
Dr. Frances Yankie  
Craig and Nancy Yarborough  
Dr. and Mrs. Herbert K. Yee

## Pacific Dugoni Annual Fund Consecutive Giving Society

*Consecutive Giving Society members are amongst the School of Dentistry's most loyal donors. Each has made a gift to the Pacific Dugoni Annual Fund every year for the past five or more fiscal years in a row.*

Dr. and Mrs. Stephen H. Abel  
Drs. Mark and Connie Ajlouni  
Dr. Tawfiq M. Alkilani  
Dr. Leigh C. Anderson  
Dr. Janet Andrews and Mr. David Howes  
Dr. Robert H. Barakat  
Dr. John H. Barakat  
Dr. Jay E. Bauman  
Dr. and Mrs. C. Stuart Beach  
Dr. and Mrs. David H. Bill  
Dr. William B. Blocher  
Dr. Charles D. Brodsky  
Dr. and Mrs. Frank A. Brucia  
Dr. Alan W. Budenz  
Dr. Dorothy Burk and Mr. Ken Harrison  
Mr. John Cagnone  
Dr. and Mrs. David S. Campbell  
Dr. and Mrs. Falconer E. Campbell  
Dr. and Mrs. Daniel M. Capponi  
Dr. Brian M. Carey  
Dr. Naomi Marie Carolino-Au  
Dr. and Mrs. Bruce H. Carter  
Dr. and Mrs. Daniel Castagna  
Dr. and Mrs. Tandy J. Centers  
Dr. and Mrs. Ronald L. Champion  
Drs. Cheng-Tai Chen and Jennifer Chang  
Dr. and Mrs. Garrett E. Chappell  
Dr. Rick A. Chelemedos  
Dr. Jiangkai Chen  
Dr. Kin and Lenore Ching  
Dr. Susana M.S. Chou  
Dr. and Mrs. Tyler L. Clark  
Dr. and Mrs. Joel A. Cohen  
Dr. Marvin W. Conley  
Dr. and Mrs. C. Bayless Conley, Jr.  
Richard and Leslie Cordano  
Dr. and Mrs. Cory J. Costanzo  
Dr. and Mrs. Larry B. Crawford  
Dr. and Mrs. Antonio Cucalon III  
Drs. Robert M. and Marina P. Cuenin  
Drs. Alexis Lyons and Binh Dao  
Dr. Diem-Trang N. Dao  
Dr. and Mrs. Laurence A. Darrow  
Mr. Fred de Roode  
Dr. and Mrs. John DeLorme  
Dr. and Mrs. Gary Y. Dodobara  
Dr. Zachary T. Dodson  
Dr. Lindsay L. Don  
Dr. Bella Doshi and Mr. Chet Bhavsar  
Dr. and Mrs. Larry M. Doyle  
Dr. Richard P. Doyle  
Dr. Joseph K. Drinkwater  
Dr. Olga Dudinskaya and  
Mr. Justin Smutko  
Dr. and Mrs. Arthur A. Dugoni  
Dr. and Mrs. Stafford J. Duhn  
Dr. and Mrs. Dean L. Duncan  
Drs. Vananh Bui and Steve Duong  
Dr. and Mrs. Thomas B. Dusel  
Drs. Robert Dyer and Christina Fantino  
Mr. Uri and Dr. Cindy Eliahu  
Dr. and Mrs. I. Lee Ence  
Dr. and Mrs. Joseph V. Errante  
Dr. Masoud Fanaian and  
Ms. Mariana Shiralian  
Dr. Nava Fathi  
Dr. David Feder and Ms. Elizabeth Luttrell  
Dr. and Mrs. David H. Feldman  
Dr. Patrick J. Ferrillo, Jr.  
Dr. and Mrs. Morel Fidler  
Dr. Michael Fields and  
Ms. Pamela Gerard  
Dr. Jonathan B. Fisher  
Dr. and Mrs. D. Kurtis Folgner  
Drs. Ellen and Troy Follmar  
Dr. and Mrs. John Fong  
Dr. Ka Yan Mary Fong  
Dr. Theresa Frank and Mr. Ron Bucher  
Dr. Richard Fredekind and  
Ms. Linn Brown

Dr. and Mrs. Ronald R. Freeman  
Dr. and Mrs. Michael French  
Dr. Scott T. Frey  
Dr. Sherif A. Gabr  
Dr. and Mrs. William D. Gilbert  
Dr. and Mrs. David Goldberg  
Dr. Dell A. Goodrick  
Dr. and Mrs. James A. Graham  
Dr. and Mrs. Michael K. Greding  
Dr. and Mrs. Erich K. Habelt  
Dr. and Mrs. Michael F. Hair, Sr.  
Dr. Hamid Reza Hamid  
Dr. Elizabeth Driver Harmon  
Dr. Christopher T. Hatae  
Dr. Heidi K. Hausauer  
Dr. Christine M. Haworth  
Dr. Eddie K. Hayashida  
Dr. Eric J. Herbranson  
Dr. Ryan B. Higgins  
Dr. and Mrs. Frank R. Hodges  
Dr. and Mrs. Richard D. Hoefke  
Dr. and Mrs. Terry E. Hoover  
Dr. and Mrs. Justin S. Hughes  
Dr. and Mrs. John K. Ishizuka  
Dr. Scott and Marsha Jacks  
Dr. Janmohamed Jaffer  
Dr. Sigita Jankunas  
Dr. Joanne M. Jensen  
Dr. and Mrs. Lawrence H. Joe  
Dr. Thomas B. Jordan  
Dr. Parag R. Kachalia and  
Dr. Charity Duncan-Kachalia  
Dr. Barry G. Kami  
Dr. Constantine Karsant and  
Ms. Asimina Mourelatos  
Dr. and Mrs. George D. Karsant, Jr.  
Dr. and Mrs. Rodney J. Kellogg  
Dr. David Y. Kim  
Dr. Shellese A. King  
Dr. Alexandr S. Klimushkin  
Dr. and Mrs. Mark R. Koenen  
Dr. and Mrs. Douglas O. Kong  
Dr. Anthony T. Ku  
Dr. Kevin M. Kurio  
Dr. and Mrs. Ross C. Lai  
Dr. Laura and Mr. Ngoc Lam  
Dr. Lucille F. L. Lam  
Drs. Michael and Joelle Lambert  
Dr. and Mrs. Kenneth E. Lange  
Drs. Michael and Jill Cohen Lasky  
Dr. and Mrs. David L. Lee  
Dr. Henry S. Lee  
Dr. and Ms. Jetson S. Lee  
Dr. Natasha A. Lee  
Dr. Susan Locke Lindsay  
Drs. William P. and Faye Lundergan  
Dr. Gloria Fong and Mr. Sanford Ma  
Dr. Denise Y. Mar  
Dr. and Mrs. Clifford O. Marks  
Dr. and Mrs. Howard May  
Dr. Ben B. Maze  
Dr. Tom and Mrs. Sue McConnell  
Dr. and Mrs. Charles W. McGary  
Dr. and Mrs. David G. McMillan  
Dr. and Mrs. James E. Milani  
Dr. Nooshan Mirhadi and  
Mr. Jahan Jowharchi  
Mr. and Mrs. Gary Mitchell  
Dr. and Mrs. C. Stefan Moiceanu  
Dr. Douglas A. Moore  
Drs. Jack and Kathryn Moore  
Dr. Sydney Moore and Family  
Dr. and Mrs. Simon P. Morris  
Dr. Dolores E. Murphy  
Dr. and Mrs. Daniel J. Murray  
Dr. and Mrs. Randall W. Murray  
Mrs. Maria Murtagh  
Dr. Matthew R. Mynsberge  
Dr. and Mrs. Craig Nagareda  
Dr. and Mrs. John R. Nardone

Dr. and Mrs. Kenneth C. Nash  
Dr. and Mrs. Anders Nattestad  
Dr. and Mrs. Leon C. Nelson  
Dr. Michael D. Nelson  
Dr. and Mrs. Brady Neugebauer  
Dr. Robin M. Nishimura  
Dr. and Mrs. Timothy J. O'Connor  
Dr. Hee Soo Oh  
Dr. Jeanette M. Okazaki  
Dr. Ian J. Paisley  
Drs. Randall Partin and Mary Turoff  
Dr. and Mrs. James J. Passamano  
Dr. Bruce Peltier and Ms. Tracey Pomeroy  
Dr. Paul S. Phillips  
Dr. and Mrs. Ronald P. Pisciotta  
Dr. Gabriela and Mr. Radu Pitigoi-Aron  
Dr. and Mrs. Edgar P. Poremba  
Dr. and Mrs. Daniel S. Poulson  
Drs. David E. and Lori L. Rauterkus  
Ronald and Margaret Redmond  
Dr. Straty G. Righellis  
Dr. Mont and Mrs. Melinda Ringer  
Dr. and Mrs. Stephen C. Rose  
Dr. Mitchell G. Rudd  
Dr. and Mrs. John R. Russell  
Dr. and Mrs. Gary D. Sabbadini  
Dr. Jamie Jad Sahouria  
Dr. and Mrs. Jack M. Saroyan  
Dr. and Mrs. Donald Schmitt  
The Gerald and Nancy Schneider Family  
Dr. Lauret Schreier and Mr. Ted Horowitz  
Dr. John Schulz and  
Mrs. Barbara Eisenhauer  
Dr. Donald F. Schutte  
Dr. and Mrs. Marvin M. Scott  
Mr. James and Dr. Emilia Seiferling  
Dr. Chung-Ling Shaaw  
Dr. and Mrs. Todd E. Shatkin  
Dr. and Mrs. C. Ray Sheppard  
Dr. Deborah Shiba and Mr. Gordon Yamate  
Dr. Takashi Shigihara  
Dr. and Mrs. Dennis Shinbori  
Dr. and Mrs. Edwin J. Sims  
Dr. Sachin K. Singhal  
Dr. Mary H. and Mr. John W. Smith  
Dr. and Mrs. Stephen W. Spelman  
Dr. and Mrs. E. Bruce Springbett  
Dr. and Mrs. Terrie T. St. Germain  
Drs. Kristi Doberenz and Mark Swimmer  
Dr. and Mrs. Daniel S. Tanita  
Dr. Minh C. Thai  
Steven and Terri Tiret  
Mr. and Mrs. Vincent Tornabene  
Dr. and Mrs. Bruce G. Toy  
Dr. and Mrs. An T. Tran  
Dr. Frank D. Tran  
Drs. Kelvin Tse and  
Cynthia Weideman-Tse  
Dr. William van Dyk and Ms. Margi Sullivan  
Dr. Natalie Polon Vander Kam and  
Mr. Jeremy Vander Kam  
Dr. and Mrs. Laurent T. Vien  
Dr. and Mrs. Yuly Vilderman  
Drs. Louis S. and Betty S. Vodzak  
Mr. John Chien and Dr. Lynn Watanabe  
Dr. and Mrs. Duane L. Wirth  
Dr. and Mrs. Allen M. Wong  
Dr. Debra Woo and Mr. Bill Benoit  
Dr. Russell G. Woodson  
Dr. Frances Yankie  
Craig and Nancy Yarborough  
Dr. and Mrs. Joseph A. Zingale



## The Pacific Duogni Annual Fund Leadership Society Members

*Society Members contribute a minimum of \$1,000 a year, or \$100 for each year since graduating. Gifts to the Pacific Duogni Annual Fund support new initiatives that benefit students, patients, faculty and staff, maintaining Dugoni's rich tradition of humanism and excellence in patient care and dental education.*

Porcelain = \$10,000

Gold = \$5,000

Silver = \$2,500

Pacific = \$1,000

### PORCELAIN

Dr. and Mrs. Thomas G. Atwood  
Dr. and Mrs. David S. Campbell  
Dr. and Mrs. Falconer E. Campbell  
Dr. Kin and Lenore Ching  
Drs. Helen Lang and Chung-Ming Chang-Chien  
Mr. and Mrs. Gary M. Mitchell  
Ronald and Margaret Redmond  
Dr. and Mrs. Clifford J. Ruddle  
Dr. Jacqueline O. Uy

### GOLD

Drs. Robert M. and Marina P. Cuenin  
Mrs. Rosemary Dixon  
Dr. and Mrs. Michael F. Hair, Sr.  
Dr. and Mrs. Dale B. Herrero  
Dr. Barry G. Kami  
Dr. and Mrs. Anders Nattestad  
Dr. and Mrs. Roland Nishioka  
Dr. and Mrs. Shailesh K. Patel  
Dr. and Mrs. Louis Prusa  
Dr. and Mrs. John Y. Tang  
Dr. Jared M. Theurer  
Dr. and Mrs. Carl Trubschenck  
Dr. and Mrs. Yuly Vilderman

### SILVER

Dr. and Mrs. Sigmund H. Abelson  
Anonymous  
Dr. and Mrs. David H. Bill  
Dr. Leslie and Mr. Scott Carpenter  
Dr. and Mrs. Michael S. DiTolla, Sr.  
Dr. Bella Doshi and Mr. Chet Bhavsar  
Dr. and Mrs. Dean L. Duncan  
Drs. Robert Dyer and Christina Fantino  
Dr. and Mrs. Richard A. Farrell  
Drs. Jane and Anthony Ferrera  
Dr. and Mrs. Jeffrey L. Geissberger  
Dr. and Mrs. Herbert B. Gibbs  
Dr. and Mrs. Russell O. Gilpatrick  
Dr. N. Karl Haden  
Dr. and Mrs. Brian A. Hennessy  
Dr. Sepand Hokmabadi  
Dr. Gregory B. Irving  
Dr. Scott and Marsha Jacks  
Drs. John Young Kim and Misty Ann Cervantes-Kim  
Dr. and Mrs. Jerry Kronquist  
Dr. and Mrs. Kenneth E. Lange  
Dr. and Mrs. Richard W. Lawrence  
Dr. Quynh-Mi P. Le  
Dr. Yoon H. Lee  
Dr. and Mrs. Michael G. Long  
Dr. and Mrs. Christopher L. Louie  
Dr. and Mrs. Gary K. Low  
Drs. Lauro A. and Elizabeth P. Mora  
Dr. and Mrs. Randall W. Murray  
Dr. Tyler E. Nelson  
Drs. Hue To and Tuong Nguyen  
Dr. Jeanette M. Okazaki  
Dr. Susan and Mr. Kevin Purcell  
Dr. Sean A. Roth  
Dr. Elizabeth Roullier-Bunz and Mr. Dan Bunz  
Dr. Erin Meidinger Shah  
Dr. Ronald G. Shrader  
Dr. Mark K. Tadrissi  
Dr. and Mrs. Jeffery E. Teutsch  
Drs. Quat P.T. Tran and My H. T. Nguyen  
Drs. Sepideh Vafi and Hessam Ahani  
Dr. and Mrs. James H. Van Sicken, Jr.  
Dr. Debra Woo and Mr. Bill Benoit  
Dr. Frances Yankie

### PACIFIC

Dr. Martin P. Abelar  
Dr. Nicolo A. Addario  
Dr. Keon J. Ahghar  
Dr. Waleed Ahmad  
Dr. Tawfiq M. Alkilani  
Dr. Hamzah T. Alkordy  
Dr. Leigh C. Anderson  
Dr. Janet Andrews and Mr. David Howes  
Dr. Sahil M. Arora  
Dr. Annalee Asbury  
Dr. Brian J. M. Baliwas  
Drs. Eric Barnes and Ann Tornabene Barnes  
Dr. Rachel L. Barnhart  
Dr. Margaret Barsotti and Dr. Saam Zarrabi  
Dr. Vahe D. Barsoumian  
Dr. Anne Becker  
Dr. Stephanie A. Berg  
Dr. Shelja Bhatia  
Dr. Gerald and Paula Bittner  
Dr. Lindy and Mr. Robert Bixby  
Dr. Steven Bo  
Dr. James P. Boyd  
Dr. and Mrs. Richard Boyd  
Dr. and Mrs. Donald W. Boyle  
Dr. Jeff J. Brucia  
Dr. Arienne Galino Buniag  
Dr. Dorothy Burk and Mr. Ken Harrison  
Dr. and Mrs. David M. Burke  
Drs. David Butler and Krithika Chellappa  
Mr. John Cagnone  
Dr. Christopher J. Carillo  
Dr. Poppy M. Carlig  
Dr. David M. Cashman  
Dr. Joohyun Cha  
Dr. and Mrs. Ronald L. Champion  
Dr. Ashley L. Chan  
Dr. and Mrs. Darwin Chan  
Dr. Von L. Chan and Mr. Austin Dean  
Dr. Keng-Hao Chang  
Dr. and Mrs. Garrett E. Chappell  
Dr. Daniel J. Charlton  
Dr. Deborah H. E. Chau  
Dr. Melissa M. Chavez-Grinde  
Dr. Dilpreet Cheema  
Dr. and Mrs. Clark C. Chen  
Dr. Connie F. Chen  
Dr. Jiangkai Chen  
Dr. Linda N. Chen  
Dr. Jordan S. Christensen  
Dr. Rudolph R. Ciccarelli  
Dr. Juliana Clove  
Dr. and Mrs. William T. Conklin  
Dr. Marvin W. Conley  
Richard and Leslie Cordano  
Mr. Ben and Dr. Sun Costigan  
Dr. and Mrs. Larry B. Crawford  
Dr. Chrystle C. Chu  
Dr. and Mrs. Antonio Cucalon III  
Drs. Alexis Lyons and Binh Dao  
Dr. and Mrs. Laurence A. Darrow  
Dr. Lowell G. Daun  
Mr. Fred de Roode  
Dr. and Mrs. John DeLorme  
Dr. Medha Patel Desai  
Dr. Roberto E. DiVito  
Dr. Christine Do  
Dr. Christine M. T. Do  
Dr. Theodore E. Dodson  
Dr. Zachary T. Dodson  
Dr. Brandon M. Dole  
Dr. and Mrs. Bruce K. Donald  
Dr. Richard P. Doyle  
Dr. Joseph K. Drinkwater  
Dr. Aaron M. Duffy  
Dr. and Mrs. Stafford J. Duhn  
Drs. Vananh Bui and Steve Duong  
Dr. and Mrs. Brian J. Emrich  
Dr. and Mrs. Joseph V. Errante  
Dr. Bartolo J. Espana-Austin  
Dr. Richard A. Fagin  
Dr. Masoud Fanaian and Ms. Mariana Shiralian  
Dr. Nava Fathi  
Dr. and Mrs. John W. Feaster  
Dr. David Feder and Ms. Elizabeth Luttrell  
Dr. Patrick J. Ferrillo, Jr.  
Dr. Clarke and Mrs. Stacey Filippi  
Dr. Jonathan B. Fisher  
Dr. and Mrs. Phillip T. Fletcher  
Dr. Robert J. Flynn  
Dr. and Mrs. Kenneth E. Follmar II  
Drs. Ellen and Troy Follmar  
Dr. Jennifer A. Fong  
Dr. and Mrs. John Fong  
Dr. Kristen M. Forbes  
Dr. Linda P. Frank  
Dr. Richard Fredekind and Ms. Linn Brown  
Dr. Jordan T. Freeark  
Dr. and Mrs. Michael L. French  
Dr. and Mrs. Gregg Frey  
Dr. Christine Fu  
Dr. Gregory A. Gardner  
Dr. Coleman and Mrs. Jane K. Gertler  
Dr. Civon L. Gewelber  
Dr. and Mrs. William D. Gilbert  
Dr. and Mrs. David Goldberg  
Dr. Brittany L. Gonzales  
Dr. and Mrs. Von H. Goodin  
Dr. Brian J. Goodman  
Dr. and Mrs. Thomas A. Gordon  
Dr. Darren M. J. Goring  
Dr. and Mrs. James A. Graham  
Dr. Kapil Grewal  
Dr. and Mrs. Gregory T. Grubba  
Dr. Ashwin Gulati  
Dr. and Mrs. Erich K. Habelt  
Dr. Peter and Mrs. Janice Hagen  
Dr. Reed T. Hall  
Dr. Aja H. Hall-Kadri  
Mr. and Mrs. Brian D. Ham  
Dr. Daniel A. Hammer  
Dr. Catherine R. Harkin  
Dr. Elizabeth Driver Harmon  
Dr. and Mrs. David J. Harnick  
Dr. Matthew W. Hatzke  
Dr. Eddie K. Hayashida  
Dr. and Mrs. Benjamin B. Hellickson  
Dr. Harold C. Henderson  
Dr. Cristina M. Hernandez  
Mr. and Mrs. Nelson K. Y. Ho  
Drs. Caroline and Dennis W. Hobby  
Dr. and Mrs. Richard D. Hoefke  
Dr. and Mrs. Howard E. Hoffman  
Dr. Nathan L. Horwitz  
Dr. and Mrs. Justin S. Hughes  
Dr. and Mrs. John K. Ishizuka  
Dr. and Mrs. David K. Jalen  
Dr. and Mrs. John E. Jansheski  
Dr. Jill B. Jardine  
Dr. and Mrs. Bahram Javid  
Dr. Jacob D. Jennings  
Dr. Rachana S. Jha  
Dr. Sunny Sidhu Joseph  
Dr. Kamile Jureviciute  
Dr. Parag R. Kachalia and Dr. Charity Duncan-Kachalia  
Dr. Harsh J. Kalyani  
Dr. Murtaja A. Kamal Aldeen  
Dr. Aneil P. Kamboj  
Dr. Grey F. Kantor  
Dr. Constantine Karsant and Ms. Asimina Mourelatos  
Dr. and Mrs. George D. Karsant, Jr.

Dr. and Mrs. Garrett R. Kawata  
Dr. Timothy W. Kearns  
Dr. and Mrs. Paul A. Kennedy, III  
Dr. Kelly M. Kidon  
Dr. Backhabwha Kim  
Dr. Hayoung Kim  
Dr. Jonathan J. Kim  
Dr. Peter J. Kim  
Dr. Yoonmi M. Kim  
Dr. Christine Kirchner  
Dr. and Mrs. Peter D. Kiryakos  
Dr. Rahul G. Kode  
Dr. and Mrs. Douglas O. Kong  
Dr. Zhanna Konovalenko  
Dr. Jessica F. Kravit  
Dr. Kevin M. Kryder  
The Krzywicki Family  
Dr. John Y. Kuan  
Dr. Rashmi Kurian  
Dr. Kevin M. Kurio  
Dr. Sean K. Kutlay  
Dr. Joanne E. V. Lagos  
Dr. Angela Laithangbam  
Dr. Laura and Mr. Ngoc Lam  
Dr. Summer H. Lane  
Dr. Jason L. Larkin  
Drs. Michael and Jill Cohen Lasky  
Dr. Jamie G. Leach  
Dr. and Mrs. David L. Lee  
Dr. Jamie J. Lee  
Dr. Kunsun Lee  
Dr. and Mrs. Stanley T. Lee  
Dr. Nicholas E. Leon-Guerrero  
Dr. Doo Y. Lim  
Dr. and Mrs. Victor L. Lim  
Dr. Susan Locke Lindsay  
Dr. Leonard L. F. Ling  
Dr. Aimin Liu  
Dr. Josh X. Liu  
Dr. Patrick W. T. Lok  
Dr. and Mrs. John D. Lokrantz  
Dr. and Mrs. George A. Louie  
Dr. Justin H. K. Louie  
Dr. and Mrs. Thomas E. Love  
Dr. Christian J. Low  
Dr. Casey A. Luu  
Dr. Gloria Fong and Mr. Sanford Ma  
Dr. Andrew L. Mahler  
Dr. Jesse W. Manton  
Dr. Alan D. Marcus  
Dr. Jill A. Martenson  
Dr. Jaclyn Corcoran Martinez  
Dr. Yajaira Martinez  
Dr. Sukhmani Marwaha  
Dr. and Mrs. Melvin L. Matsuda  
Dr. Grant K. Matsuura  
Dr. James R. Mattingly V  
Dr. and Mrs. Howard M. May  
Dr. Ben B. Maze  
Dr. and Mrs. Michael W. McCarthy  
Dr. Daniel T. McFarland  
Dr. Monika M. Meekay  
Drs. Timothy Mettler and Victoria Griego  
Dr. and Mrs. Douglas H. Miller  
Dr. John F. Miller  
Dr. Ronald L. Mino  
Dr. Nooshan Mirhadi and Mr. Jahan Jowharchi  
Dr. and Mrs. Anton F. Misleh  
Dr. Jesse A. Mitchem  
Dr. Hwi Moon  
Dr. and Mrs. Douglas A. Moore  
Dr. Richard F. Moorhouse, Jr.  
Dr. and Mrs. Simon P. Morris  
Dr. Tejas R. Mulye  
Dr. and Mrs. Daniel J. Murray  
Dr. Sarah K. Murray  
Dr. and Mrs. Craig Nagareda

Dr. Nicole Nalchajian and  
     Mr. Toufik Harmaz  
 Dr. and Mrs. Alexander G. Namikas  
 Dr. and Mrs. Leon C. Nelson  
 Dr. and Mrs. Brady Neugebauer  
 Dr. Minh-Khang E. Ngo  
 Dr. Amanda Nguyen  
 Dr. ChauLong T. Nguyen  
 Dr. Jacqueline D. T. Nguyen  
 Dr. James Binh Nguyen  
 Drs. Winnie Lam and Lam Nguyen  
 Dr. Tuan H. Nguyen  
 Dr. Omid Niavarani  
 Dr. and Mrs. Ronald W. Nichols  
 Dr. Anna K. Nihkinson  
 Dr. Natalia Nikolaeff-Svensson  
 Drs. Tiffany and Mark Nishimura  
 Dr. Lorna Okada and Mr. Darrell Wong  
 Dr. Ian J. Paisley  
 Dr. Seokjoon Pang  
 Dr. Jigneshkumar I. Parmar  
 Dr. and Mrs. James J. Passamano  
 Dr. Rushang S. Patel  
 Drs. Azadeh Paydar and  
     Khashayar Etemadi  
 Drs. Brian Payne and Leslie Jue  
 Dr. and Mrs. Ricardo M. Perez  
 Dr. Monte F. Person  
 Dr. and Mrs. John J. Petrini  
 Dr. My Phuong Pham  
 Dr. and Mrs. Ronald P. Pisciotta  
 Dr. Camille M. Pompeo  
 Pool Family  
 Dr. and Mrs. Edgar P. Poremba  
 Dr. and Mrs. Daniel S. Poulson  
 Dr. and Mrs. Kostantinos N. Pries  
 Dr. Brisbain R. Pucan  
 Dr. Robert W. Quan  
 Dr. Monika Radke  
 Dr. Abbas Raissi  
 Drs. David E. and Lori L. Rauterkus  
 Dr. Seth L. Reder  
 Dr. Brydan D. Regehr  
 Drs. David and Beth Regehr  
 Dr. Brenda S. Reyes  
 Dr. Straty G. Righellis  
 Drs. Shwetha Rodrigues and  
     Rahul Thakur  
 Dr. Kristina Rogers  
 Dr. and Mrs. Geronimo F. Romero  
 Dr. Michael S. Rose  
 Dr. Jeffrey S. Rubin  
 Dr. Steven and Mrs. Lindsay Ryan  
 Dr. and Mrs. Gary D. Sabbadini  
 Dr. Lesley A. Sacramento  
 Dr. Suzanne Saidi  
 Dr. Shiva Salehi  
 Dr. Alana V. Saltzberg  
 Dr. Gurjot K. Sandhu  
 Dr. and Mrs. Anthony K. Santos  
 Dr. Yasamin Sariaslani  
 Dr. and Mrs. Jack M. Saroyan  
 Dr. Denton H. Sato  
 Dr. and Mrs. Michael J. Sayegh  
 Dr. Scott D. Schapansky  
 Dr. Kristy Chu and Dr. Brandon Schiffner  
 Dr. and Mrs. Donald C. Schmitt  
 Dr. L. William Schmohl  
 The Gerald and Nancy Schneider Family  
 Dr. Lauret Schreier and Mr. Ted Horowitz  
 Dr. John Schulz and  
     Mrs. Barbara Eisenhauer  
 Dr. and Mrs. Marvin M. Scott  
 Dr. Amy L. Scriven-LaPointe  
 Dr. Aanchal Sekhon  
 Dr. and Mrs. Todd E. Shatkin  
 Dr. and Mrs. Kelly P. Shaw  
 Dr. Karimeh H. Shehadeh  
 Dr. Marlana V. J. Shile  
 Dr. and Mrs. Dennis Shinbori  
 Dr. Nicole A. Shinbori  
 Dr. Jennifer L. Silvers  
 Dr. and Mrs. Edwin J. Sims  
 Dr. Aruna Singh  
 Dr. Sachin K. Singhal  
 Dr. Maria Heidi O. Sipin  
 Dr. John C. Slattery  
 Dr. and Mrs. Alan J. Smith  
 Dr. Kailey A. Smith  
 Dr. Mary H. and Mr. John W. Smith  
 Dr. and Mrs. Stephen W. Spelman  
 Dr. Emanuel J. Staes  
 Drs. James Stephens and Susan Park  
 Dr. Laura C. Stewart  
 Dr. Melissa Styles and  
     Mr. Andrew Loganbill  
 Dr. Michael Suh  
 Drs. Kristina Svensson and  
     Carsen Bentley  
 Drs. Kristi Doberenz and Mark Swimmer  
 Dr. John P. Szerszen  
 Dr. Shahin Taghikhan  
 Dr. Amirali Tahbaz  
 Dr. Aaron M. Takigawa  
 Dr. Scott K. Takiguchi  
 Dr. Ishaan Talwar  
 Dr. and Mrs. Theodore A. Tanabe  
 Dr. and Mrs. Daniel S. Tanita  
 Dr. Clint K. Taura  
 Mr. Gary and Dr. Ariane Terlet  
 Dr. Minh C. Thai  
 Dr. Judee Tippet-Whyte and  
     Mr. Steve Whyte  
 Steven and Terri Tired  
 Dr. and Mrs. William J. Tognotti  
 Dr. and Mrs. Robert J. Torghele  
 Dr. and Mrs. Bruce G. Toy  
 Dr. Frank D. Tran  
 Dr. Kim X. Tran  
 Dr. Mimi T. Tran  
 Dr. Jeanette Truong Trosset  
 Dr. Albert V. Q. Truong  
 Dr. Linda Tsang  
 Dr. Michelle Feliciano-Turner and  
     Mr. Frank Turner  
 Dr. Nastassia N. Ulasik  
 Mr. and Mrs. Johnny Uy  
 Dr. William van Dyk and  
     Ms. Margi Sullivan  
 Dr. Charles N. Van Sicklen  
 Dr. and Mrs. Laurent T. Vien  
 Drs. Louis S. and Betty S. Vodzak  
 Dr. Shana F. Vohra  
 Dr. Aleksandar Vukotic  
 Dr. and Mrs. Derek M. Wallin  
 Dr. Walter G. Weber  
 Dr. Jacob D. Weissich  
 Dr. and Mrs. Erich M. Werner  
 Dr. and Mrs. Shawn M. Widick  
 Dr. David L. Wirth  
 Dr. and Mrs. Allen M. Wong  
 Dr. Katherine A. Wong  
 Dr. Kimberly A. Wong  
 Dr. and Mrs. Wesley E. Wong  
 Dr. Wilson Wong  
 Dr. Cory M. Wood  
 Dr. Zachary T. Worsley  
 Dr. Lisa G. Wu  
 Dr. Tiffany C. Wu  
 Dr. Dong Yan  
 Dr. Natalie Yang  
 Drs. Gregory Ganji and Suzie Yang  
 Dr. Matthew S. Yarborough  
 Dr. and Mrs. Bao Min Yee  
 Dr. and Mrs. Paul K. Yee  
 Mrs. Selena Lee and Mr. Sheung Yin  
 Dr. Amy F. Yonemitsu  
 Dr. Steven H. Yoshioka  
 Dr. Misha Zahedi  
 Dr. Chelsea E. Zamudio  
 Dr. Jufen Zhou



THANK YOU TO OUR DONORS

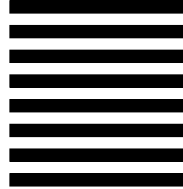
**FPO**



NO POSTAGE  
NECESSARY  
IF MAILED  
IN THE  
UNITED STATES

**BUSINESS REPLY MAIL**  
FIRST-CLASS MAIL PERMIT NO. 27401 SAN FRANCISCO CA

POSTAGE WILL BE PAID BY ADDRESSEE



Development Office  
University of the Pacific  
Arthur A. Dugoni School of Dentistry  
155 Fifth Street  
San Francisco, CA 94103



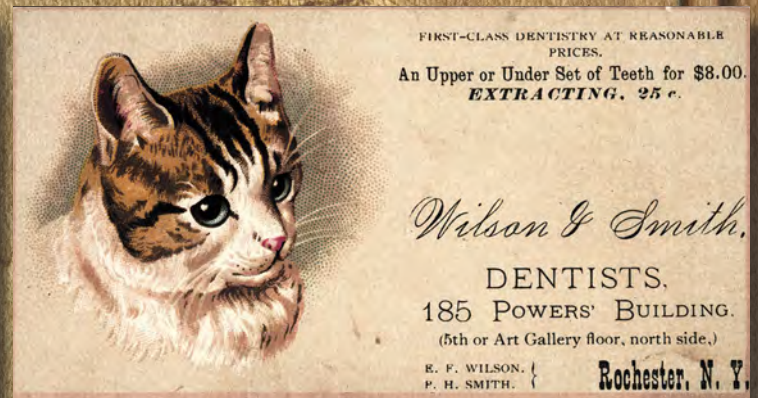


# OLD SCHOOL

A.W. Ward Museum of Dentistry

## #bizcard

Before the days of social media people used to meet and network in person. Business cards were handed out freely at events, parties and meetings and were the main source of PR for your company or service. Before hashtags, websites and LinkedIn, these beautiful calling cards were traded and kept on hand to refer to when needed. Where did you keep all your business cards?





UNIVERSITY OF THE  
**PACIFIC**  
Arthur A. Dugoni  
School of Dentistry

155 Fifth Street  
San Francisco, CA 94103-2919

Address Service Requested

NON-PROFIT ORG  
US POSTAGE  
**PAID**  
SAN RAMON CA  
PERMIT 79



*"Donating to the Annual Fund is one way I can  
show my unending appreciation to Pacific"*

*Dr. Jared Pool '09  
Pacific Dugoni Annual Fund Leadership Donors*



[www.dentalgifts.org](http://www.dentalgifts.org)  
(415) 929-6431

Pacific gave me the tools to succeed.